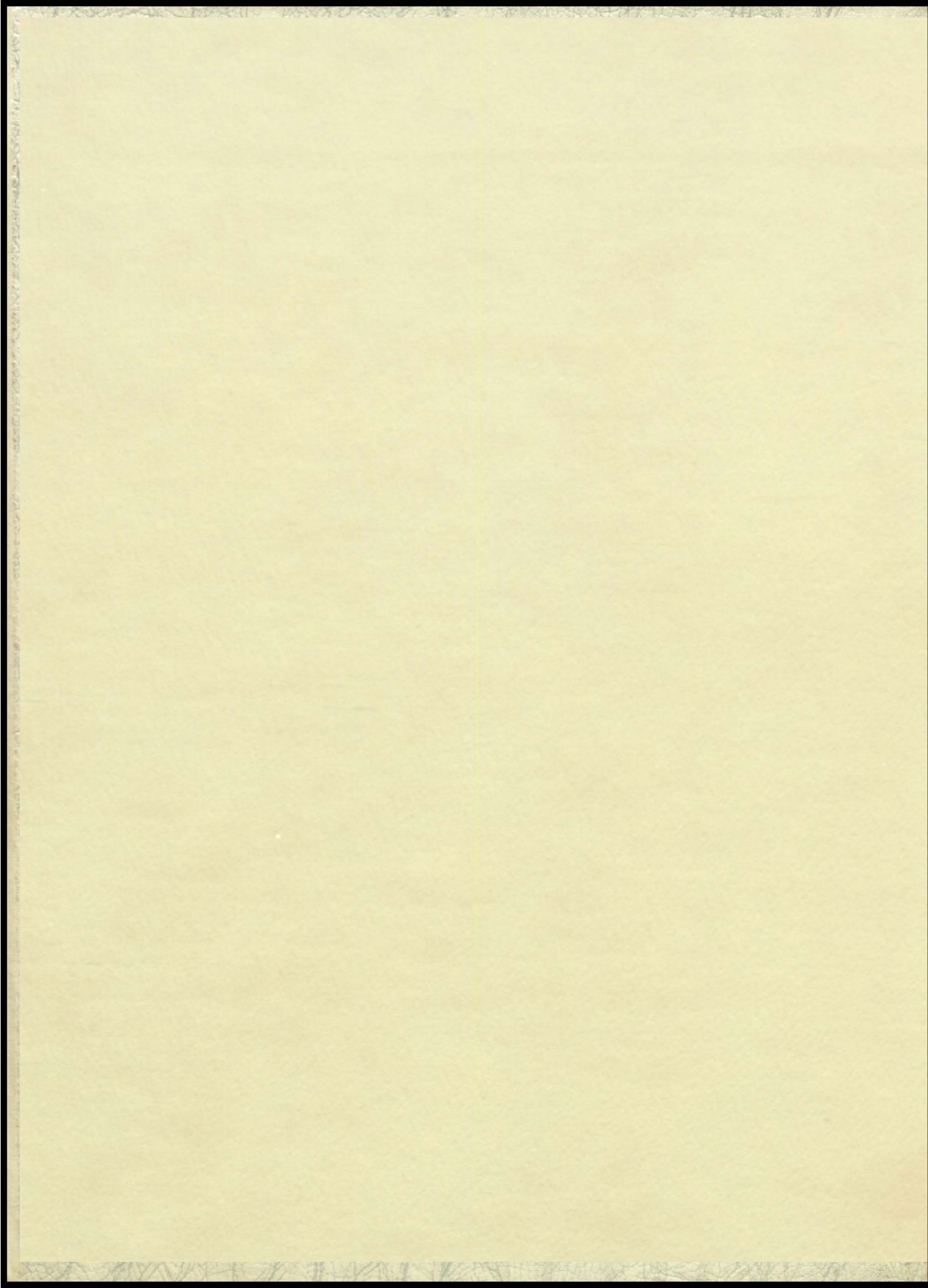


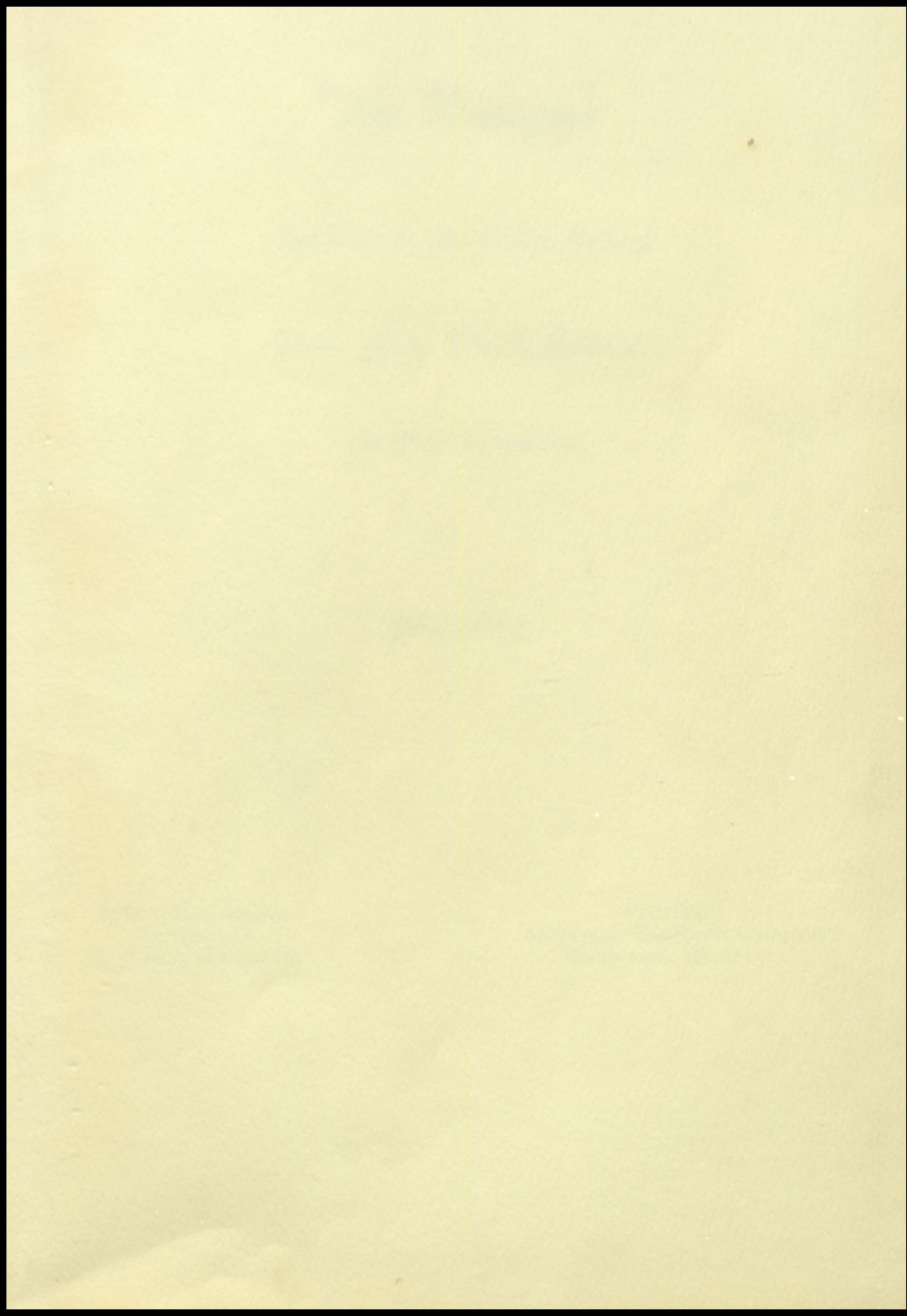


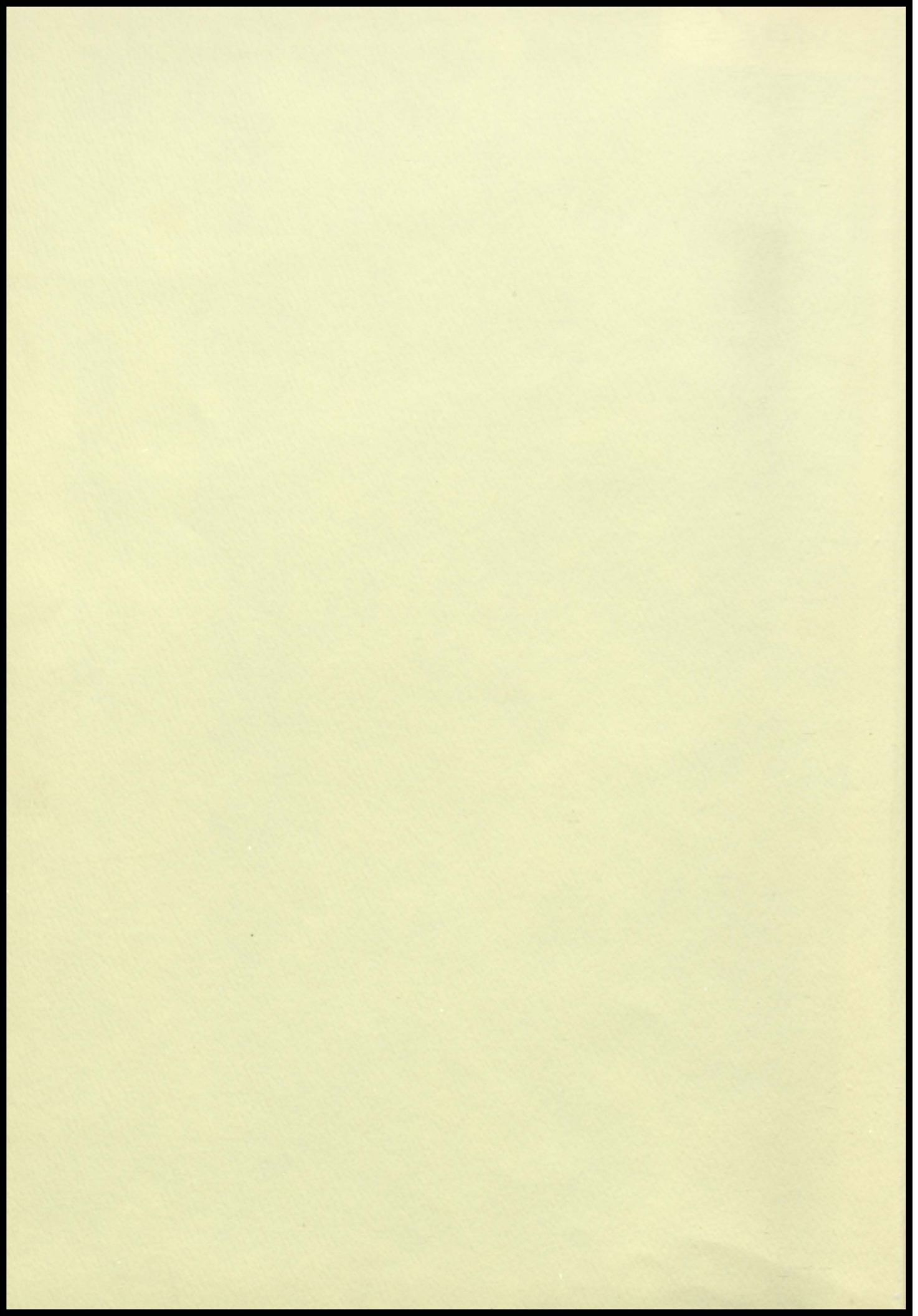
THE DRAGON



1954







The Dragon

Published by the Senior Class of

Pine City High School

Pine City, Minnesota

June 1954

PHOTOGRAPHER
Ed Champa
St. Cloud, Minnesota

PRINTER
American Yearbook Company
Owatonna, Minnesota



We, the senior class, dedicate the "1954 Dragon" to Miss Mary Ellen Lawler, our annual advisor, who for the past four years has helped to make the "Dragon" possible. Thanks, Miss Lawler!

Faculty





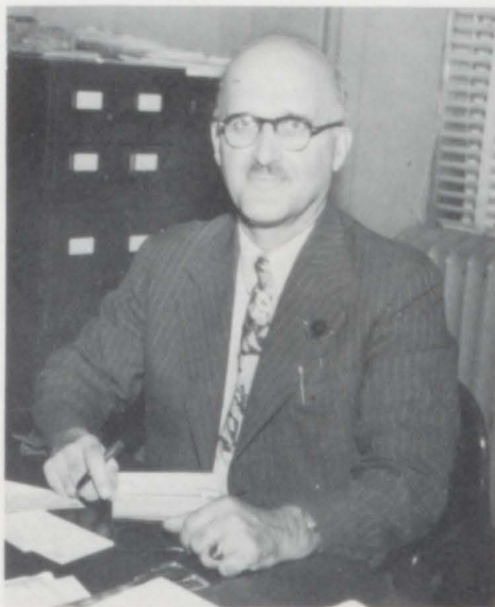
Ray Arimond, B. A.
Chemistry, Physics,
Biology.



Ray Doyle, B. S.
Junior High English.



Mrs. James Baker
Office Secretary.



Victor Ziebarth
Superintendent.



Charles Hackman
B. S. Trigonometry,
Geometry.



Mrs. Josephine Carpenter
B. S. Physical Educa-
tion, Health and
Safety.



Paul Oldenburg
Principal.



Mark Halling, B. A.,
B. M. Rudiments of
Music, Instrumental
Music.



Therese Ditty, B. M.
Junior High Music.



Wesley Hanson, B. S.
Social Science,
American History.



A. A. Hoberg, B. S.
Agriculture.



Mary Ellen Lawler
B. S. Junior, Senior
English, Latin.



Inga Rogstad, B. E.
World History, Con-
servation and Civics.



Hazel Hoorn, B. S.
Home Economics.



Dorothy Muck, B. S.
Stenography, Typing,
Bookkeeping.



George Saunders, B. E.
Driver's Training,
Physical Education,
Aeronautics.



John Huber, B. A.
Sophomore English,
Librarian.



Les Nell B. A.
Coach, Industrial Arts.



Stuart Skoglund, B. S.
Coach, Economic
Geography.



Joan Jenia, B. A.
Junior High English.



Edward Nye, B. S.
General Science.



Elizabeth Wild, B. S.
Junior High Math.

Seniors



ANDERSON, YVONNE --
"Oh!!" Library Club.



BESSER, MELVIN -- "Pre-
tend" (I'm 6' 9" tall.)

BAKER, KAYE -- "I'll
Walk Alone" (until I grad-
uate!) Library Club, Girls'
Chorus, Mixed Chorus.



BJORK, ROBERT "Bob" --
"Time on my Hands"
Class Play Cast, Student
Council, Class Officer,
Boys' Chorus, Mixed Chor-
us, Declamation, Annual
Staff, Baseball, Prom
Committee.

BAUM, CECLIA --
"Strange Music" (Rudi-
ments) Pep Club, Library
Club, Girls' Chorus.



BOWERS, BOYD -- "Baby
Let me Kindle Your
Flame" Class Play Cast,
Football.

BECVAR, JOHN "Johnnie"
-- "Don't Blame Me"
Class Play Cast, Student
Council, Boys' Chorus,
Mixed Chorus, Football,
Track, Baseball, F.F.A.



BROGREN, LESLIE "Les" --
"At Last" (graduation)
Football, Track, Baseball,
F.F.A.

BELL, DELORES "De" --
"Going Steady" Pep Club,
Library Club, Girls' Chor-
us, Mixed Chorus.



BURMEISTER, CAROL --
"Seven Lonely Days"
Homecoming Attendant,
Pep Club, Library Club,
Student Librarian.

BENSON, BONNIE -- "My
Sweetheart's the Man in
the Moon" Library Club,
Girls' Chorus.



CARSON, GERALD "Jer"
-- "Who is Sylvia?" Class
Play Cast, Student Coun-
cil, Class Officer, Library
Club, Boys' Chorus, Mixed
Chorus, Declamation,
Football, Track, Prom
Committee.

CHALUPSKY, LAWRENCE - "Tell Me Why" (the school day is so long).



FRANCE, MARVIN "Marv" - "I Want a Girl" (Just like the girl that married dear old dad). Basketball, Football, Annual.

CLYNE, MARILYN - "Off We go into the Wild Blue Yonder" Library Club, Girls' Chorus, Mixed Chorus, Declamation, Band, Majorette.



HAAVISTO, RONALD "Ronnie" - "A Fellow Needs a Girl" F.F.A.

ERICKSON, DARLENE "Dee" - "Who??" Class Play Cast, Student Council, Class Officer, Homecoming Committee Chairman, Pep Club, Library Club, Student Librarian, Girls' Trio, Mixed Chorus, Girls' Chorus, Declamation, Annual Staff, Girls' State Alternate.



HABRMAN, DORIS - "Til I Waltz Again With You" Class Play Cast, Class Officer, Homecoming Attendant, Library Club, Mixed Chorus, Girls' Chorus.

FIEBING, JOHN - "Oh, What a Beautiful Morning" (Saturday) Track, F.F.A.



HIPPEN, LeROY - "I'll Get By" (I hope) Football, F.F.A.

FISCHER, ROBERT "Bob" - "Whistle While You Work" Class Play Cast, Student Council, Homecoming Committee Chairman, Library Club, Mixed Chorus, Boys' Chorus, Annual Staff, Prom Committee, Basketball, Football, Track.



HISCHER, JOYCE - "Freckles" Pep Club, Girls' Chorus, Library Club.

FLYNN, PATRICIA "Pat" - "A Wonderful Guy" Student Council, Class Officer, Homecoming Attendant, Pep Club, Library Club, Declamation.



HOEFLER, GAYE - "Heartaches" Class Play Cast, Student Council, Homecoming Attendant, Pep Club, Annual Staff, Prom Committee, Band.

HOLETZ, ARLENE "Arla" -
 "Down Yonder" (Rush
 City??) Class Play Cast,
 Student Council, Class Of-
 ficer, Pep Club, Library
 Club, Student Librarian,
 Girls' Chorus, Mixed Chor-
 us.



MANN, E. LeROY "Buzzy"
 - "Five Minutes More"
 (to pass between classes)
 Boys' Chorus, F.F.A.

HOLETZ, MARY ANN - "I
 Wanna be Loved" (call 247
 -W) Pep Club, Band.



MARTINSON, GERALD
 "Jerry" - "Ja, Da" (Oh!
 No!!) Class Play Cast,
 Student Council, Class Of-
 ficer, Boys' Chorus, Mixed
 Chorus, Declamation, An-
 nual Staff, Baseball, Base-
 ball Captain.

HOWARD, JANET - "I'll
 String Along With You"
 Class Officer, Pep Club,
 Girls' Chorus, Mixed Chor-
 us.



METCALF, KATHRYN
 "Kay" - "Unforgettable"
 (Slumber Parties!) Pep
 Club, Library Club, Girls'
 Chorus, Mixed Chorus.

MAHER, JOHN "Jack" -
 "Lazybones" Basketball,
 Track, F.F.A.



MEYER, JEAN - "I Dream
 of Jeannie with the Light
 Brown Hair" Girls' Chorus.

MAHER, THOMAS "Tuck"
 - "Sometime" (I'll have
 my social done.) F.F.A.



MILLER, MARY ANN -
 "Oh! Johnny - Oh Johnny!"
 Pep Club, Girls' Chorus,
 Mixed Chorus, Declama-
 tion, Band.

MANN, DOROTHY "Dot"
 - "No One Will Ever Know"
 Girls' Chorus, Mixed Chor-
 us.



MILLS, PATRICIA "Pat" -
 "Butterflies" (for a biology
 bug collection) Transferred
 from Duluth.

MONTGOMERY, MARLYS
"Mar" - "Love Somebody"
Class Play Cast, Student
Council, Pep Club, Girls'
Trio, Mixed Chorus, Girls'
Chorus, Annual Staff, Prom
Committee, Library Club,
Girls' State, Declamation.



OKESON, SHARON - "So
Long Pal" (to Ruth T.) Li-
brary Club, Declamation,
Band.

MORRIS, LeROY "Lee" -
"My Buddy" ('46 Ford)
Track.



ODENDAHL, GRACE "Gra-
cie" - "My Destiny" (to
pass driver's training).

MORRIS, LUCILLE "Lucy"
- "Trying" Girls' Chorus.



OLSON, DIANNE - "Be My
Life's Companion" Home-
coming Attendant, Mixed
Chorus.

NELSON, THEODORE
"Ted" - "Oh Happy Day"
F.F.A.



OSTROM, RICHARD "Dick"
- "There is Nothing Like a
Dame" Class Play Cast,
Mixed Chorus, Boys' Chor-
us.

NIELSEN, LOWELL - "Deep
in the Heart of Texas" Bas-
ketball, Football, Baseball,
F.F.A., Boys' Chorus.



PATTERSON, JOAN -
"Don't Call My Name"
(I'm bashful) Girls' Chor-
us.

NILSSON, MARY KAY
"Katie" - "Undecided" (a-
bout everything?) Class
Play Cast, Pep Club, Library
Club, Student Librarian,
Girls' Trio, Mixed Chorus,
Girls' Chorus, Declama-
tion, Annual Staff, Prom
Committee, Chengwatana,
Cheerleader, Band, Girls'
Sextette.



PETERSON, IVER - "Day
Dreaming" F.F.A.

PIXLEY, ALICE JEAN "Aily" - "Darlin', You Can't Love One" Library Club.



SIGURDSEN, ALDEN - "Chicken Reel" F.F.A.

PLESSEL, PATRICIA "Pat" - "Three O'clock in the Morning" Pep Club, Library Club, Student Librarian, Mixed Chorus, Girls' Chorus.



SMITH, BEATRICE "Bea" - "Five Foot Two" Pep Club, Library Club, Girls' Chorus, Band.

ROSE, SHIRLEY - "The Game of Broken Hearts" Library Club, Mixed Chorus, Girls' Chorus.



SPICKLER, RONALD "Spick" - "You Can't be True, Dear" Homecoming, Mixed Chorus, Boys' Chorus, Basketball, Baseball, Football, Football Captain, Track, Track Captain.

SAUSER, MARY - "Make Believe" (she's a Democrat) Girls' Chorus.



STOFFEL, EDWIN - "I'm Just a Poor Bachelor"

SCHWARTZWALD, JANET - "Sleepytime Gal" Class Play Cast, Student Council, Class Officer, Homecoming Attendant, Pep Club, Mixed Chorus, Girls' Chorus, Annual, Cheerleader.



STOFFEL, VERONICA "Monie" - "Turn Back the Hands of Time" (so I have another week end).

SHUMWAY, CLYDE "Buster" - "Slow Poke" Class Officer, Mixed Chorus, Boys' Chorus, Basketball, Football, Track, Band.



SWANSON, RODNEY - "I'm an ol' Cow-Hand" F.F.A.

TEICH, GARLAND "Buzzy"
- "Linger Awhile" Base-
ball, F.F.A.



WANOUS, JOSEPHINE "Jo"
- "Whispering" Library
Club.

THIEMAN, DONNA MAE
"Don" - "Downhearted"
Homecoming attendant,
Library Club.



WHITE, SHEILA - "With a
Song in My Heart" Student
Council, Class Officer,
Homecoming Attendant,
Pep Club, Library Club,
Girls' Trio, Girls' Chorus,
Mixed Chorus, Annual Staff,
Band.

THIRY, GERALD "Jerry" -
"Gone Fishin!" Class Offi-
cer, Boys' Chorus, Mixed
Chorus, Basketball, Track,
Baseball, F.F.A.



WOOD, SYLVIA "Syl" -
"Ain't Misbehavin'??"
Class Play Cast, Student
Council, Homecoming
Committee Chairman, Pep
Club, Library Club, Girls'
Chorus, Mixed Chorus, An-
nual Staff, Prom Commit-
tee, Chengwatana, Band.

VACINEK, MARLYS MAE
- "Choo'n Gum" Girls'
Chorus, Mixed Chorus.



WURM, BERNARD - "S'po-
sin'" (I didn't study) Stu-
dent Council, F.F.A.

Not Shown: GORDON SAN-
DEEN and LEO TOWLE.

Underclassmen



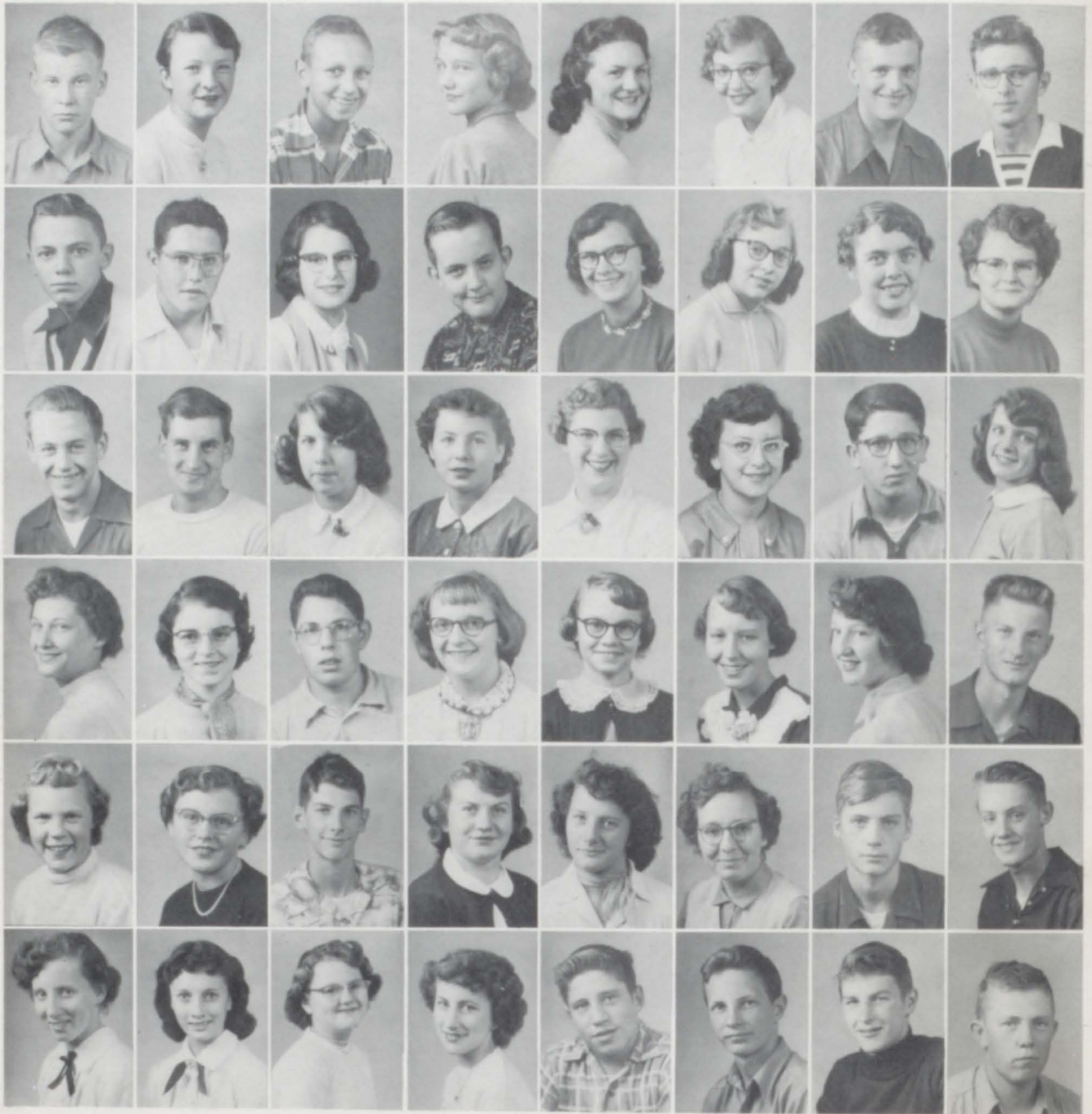


Juniors

Row 1: Robert Anderson, Virgine Anderson, Ronald Baker, Sandra Barnes, Esther Bell, Wanda Bell; Row 2: Leslie Benson, Shirley Bergstrom, June Bettinger, Jane Blanchard, Dan Boo, Gladys Burman; Row 3: Marilyn Burmeister, Carole Carlson, Sam Carlson, Doris Caroon, Robert Caroon, Shirley Caroon; Row 4: Karen Challeen, Deanne Clark, Virginia Delany, Jimmy Doran, Andy Edin, Donna Mae Erickson; Row 5: David Fischer, Barbara France, Jim Gillespie, Alfred Grant, Laura Grover, Ronald Hawkinson; Row 6: Fred Hodge, Abel Korf, Richard Kosik, Darlene Krube, Beverly Kutzke, Dallas Lloyd.



Row 1: Darlene Miska, Carolyn Najmon, Frances Nelson, Alice Osterdyke, Delores Ovik, Joyce Pechacek;
 Row 2: Earl Pixley, Margaret Rasmusson, Gary Rohweder, Bill Roubinek, Lucille Saumer, Michael Selleck;
 Row 3: Charles Shimek, Raymond Stevens, Roger Stevens, Jon Stratte, Robert Teich, Charles Thieman;
 Row 4: Oscar Thorson, Ruth Turgeon, Mary Ann Vach, Roger Vacinek, Darlene Wanous, Ardis White;
 Row 5: Walter Weis, Donald Wurm, Donna Yost, Darlene Anderson.



Sophomores

Row 1: Gerald Anderson, Nancy Anderson, John Baur, Beverly Beavers, Delores Becvar, Ellen Bell, Donald Bible, Jim Blanchard; Row 2: Ray Blumhoffer, Dennis Bowers, Phyllis Burman, Jon Challeen, Joann Chalupnik, Ann Clark, Cleo Clem, Janice Clyne; Row 3: Henry Cornelius, Donald Cummings, Lorene DeLong, Dorothy Doenz, Margie Dow, Lois Finger, Curtis Fore, Pat Fuller; Row 4: Pat Gebert, Georgiana Gillespie, Kenneth Hady, Aldora Houdek, Sharon Janke, Joyce Janssen, Mary Ann Janssen, Roger Jewell; Row 5: Jean Johnson, Myrna Johnson, Gerald Kozak, Florence Kubat, Mary Kubesh, JoAnn Kupsch, Ted Larson, Frank Lind; Row 6: Coleen Maher, Nancy Maher, Beverly Miller, Ann Marie Minar, David Miska, Luther Morris, Alvin Mortenson, Herbert Meyer.



Row 1: Marlene Bell, Robert Benson, Alice Dickenson, Joyce Eng, Roger Haavisto, Janice Hischer, Jerome Kryzer, Bruce Kubat; Row 2: Lorelei Livingston, Sadie McDermet, Betty Nelson, Kay Nelson, Andrew Neville, Carol Nordrum, John Noreen, Hazel Nordstrum; Row 3: Ellen Novy, Gloria Okeson, Edwin Olafson, Mavis Olson, Robert Ovriss, Shirley Orvis, Karen Otto, Rollin Patterson; Row 4: Amos Peterson, Wanda Peterson, Carol Powers, Sue Prairie, Margie Purdy, La Vone Rohweder, John Roubinek, Bernice Russell; Row 5: Jerry Schloesser, Charles Schreifles, Ernest Sedorf, Louis Shumway, Lenore Siekmeier, Alice Shaeffer, Marian Shingledecker, Mary Ann Soukup; Row 6: Mildred Soukup, Dean Stoffel, Tom Stoffel, Charles Swanson, James Sward, Lloyd Swanson, Allan Thiry, Donald Tollefson; Row 7: Beverly Tuma, Marilyn Wanous, Myrna Wanous, Kent Warhol, Elaine Wood.



Freshman

Row 1: Jo Ann Anderson, Leroy Anderson, Paulene Anderson, Joyce Baker, Wally Baum, Barbara Bell, Darlene Beckstrom, Janet Bell; Row 2: Margaret Bina, Darlene Bergstrom, Marlys Besser, Barton Bliss, Douglas Blomberg, Lorelei Button, Pat Burn, Elaine Caroon, Row 3: Leo Caroon, Patsy Caroon, John Chalupnick, Gerald De Boer, Robert Delaney, Leona Doenz, John Domagalla, Joy Doran; Row 4: Donna Mae Erickson, Marlys Erickson, Jerome Felton, Dwayne Finger, Arlene Fish, Sharon Fleming, Mike France, Jeanette Franzen; Row 5: Leroy Geisler, Dennis Grover, Agnes Habrman, Ronald Hanson, Albert Harvy, Richard Henderson, Patricia Henry, Richard Holetz; Row 6: Paul Janssen, Corinne Johnson, Dennis King, Donald Klande, Margie Kryzer, Gareld Lindgren, Robert Lindstrom Joan Little.



Row 1: Donna Magnesson, James McClellan, Gerald Mills, Jo Ann Mills, Virgil Miska, Neil Moe, Arthur Mortenson, Joyce Mullins; Row 2: Dennis Nelson, Lee Anne Nelson, Vernice Nelson, Russell Norell, Marjorie Norman, Lavern Nowling, Betty Odendahl, Randy Olson; Row 3: Karen Onstad, Barbara Paranto, Roger Plesse1, Sandra Powley, Martha Purdy, Bonita Raines, Areatha Rike, Sharon Roubinek; Row 4: Janet Rypkema, Janice Rypkema, Delores Rys, Beverly Schultz, Darlene Schultz, Ronald Senske, Donna Shifflet, Ronald Shimek; Row 5: Pat Shuey, Gary Sickler, Gary Skalicky, Arthur Smith, Beverly Smith, Gary Saumer, George Stevens, Jack Swedlund; Row 6: Ann Swenson, Jo Ann Vosika, Emily Weis, Jerry Yost.

Eighth Grade



Row 1: Loren Erhart, Harry Bell, Dwayne Prax, Elaine Krube, Yvonne Mans, Nancy Selleck, Dennis Wilcox, Elmer Mcdermeit, Stuart Peterson, Robert Saumer; Row 2: Maurice Smith, David Miller, Garland Kotek, Kathleen Teich, Patty Vach, Rosemary Byrne, Helen Fish, Bill Meyer, Dale Teich; Row 3: Dick Lewis, Dick Skalicky, Bill Tuma, James Bender, Barbara Miller, Collette Ostrum, Barbara Bina, Roger Nelson, James Carlson.



Row 1: Sharon Janssen, Carl Anderson, Alice Anderson, Darlene Soukup, Eugene Kubesh, Robert Kubesh, Ronald Smith, Donna Mikyska, Darwin Long, Judy Froelke, Richard Buckley; Row 2: Gail Hinze, Janice Anderson, Sharon DeBoer, LeeRoy Engh, Richard Booth, Judith Mattson, Eulala Anderson, Nancy Whited, Mary Wimmer, Rodney Tilbury, Dick Wenborg, Harold Anderson; Row 3: Darlene Grothe, Martha Gillespie, Richard Larson, Mary Bauer, Dennis Strelow, Janice Tracy, Antionette Wurm, Scotty Russ, Kenneth Cahill, James Delaney, Winifred Wurm, Johanne Stoffel, Patty Nelson, Richard Schreifels, Donald Kosik.



Row 1: Jerry Caroon, James Baur, Delbert Delaney, Knute Lewis, Judy Neil, Peter Felten, Daniel Miska, Judy Saumer, Tommy Blumhoefer; Row 2: Elva Janke, Judy Odendahl, Beryl Bliss, Dorothy Plessel, Marlys Tollefson, Frances Jacobson, Marian Erickson, Arlys Skalicky, George Soderbeck, Sharon Hulett; Row 3: Linda Montgomery, Fred Tuma, Danny Erhart, Murray Edin, Carl Sundquist, Kenneth Albertson, Bill Everts, Phyllis Haberman, Lyle Anderson, Mary Jane Pobuda.



Row 1: Gerald Carlson, William Shaffer, Sandra Moe, Lavonna Tilbury, Allen Gilson, Richard Finger, Jerome Wurm, Retta Stanton, Michael Johnson, Douglas Nelson; Row 2: Deanne Schwartzwald, Margaret Kubesh, Marie Doenz, Roger Button, Sandra Hansen, Judy Siebert, Shirley Smetana, Joanne Pierce, Beth Ann Roegge, Barbara Wiener; Row 3: Phyllis Janssen, Dennis Roubinek, Bob Bobzin, Eddie France, Janice Henry, John Appleby, Dennis Mohr, Darlene Mullins, Clement Riedner.

Class History

The other day while sitting in sixth hour study, I began to recall all our years here in P. C. H. S. It seems only yesterday that clutching my mother's hand, I timidly walked to school. That was over twelve years ago, September 1941, when a small handful of us enrolled in kindergarten. Now that I think about it, that was the first and last year they had kindergarten all year long. I wonder if we had anything to do with it.

In first grade, Miss McGuire was in charge of our Spring Program. Remember, we were all spring flowers?? About that time, too, Sylvia joined us. Oh yes, that was the year Kay and Janet spent "a few" hours in the cloak room.

While in Miss Haram's second grade, we started our rhythm band. (That's where all of our musical talent originated, I guess.) The same year the girls started chasing Jerry T., so he spent his recesses taking refuge in the swings.

It was during third grade that Clyde (Buster) S. joined us. We had weekly monitors to do our little, but necessary, tasks. Janet was "teacher's pet" that year (so we thought).

Our fourth year saw us dutifully bringing tooth brushes, wash clothes, and other "handy" articles for our Junior Red Cross Boxes. In the Christmas program, Arlene and Janet sang "off-key" and were dressed as the "Cracked-Twins."

Miss Steen, our fifth grade teacher, taught us a pointed lesson on the necessity for good behavior by cancelling our Halloween party.

Marilyn and Mary Ann were the first from our class to join "A" Band. It was in sixth grade that Mrs. Larson had us make projects on foreign countries. Francis C. left our class for California.

We really got into the swing of high school when we started seventh grade. A "little red-head", named Sheila, joined us, too. Under Mr. Gackstetter's guidance we became acquainted with the corners of the science room.

Our class got bigger in the eighth grade, with the addition of Marlys and the Rock Creek gang. When football season rolled around, we were proud to have Ronnie on the "A" squad. As usual, our homecoming float was a flop. Sylvia and Janet were Junior cheerleaders for our "B" team.

At last we were Freshmen and our class really grew. We had an enrollment of 109!! In civics class, everyone seemed to have a cold or was it our sneezing powder?? We had a lot of fun at the "Dragon's Den", while it lasted, and spent many Friday nights skating at Fish Lake. Janet and Mary Kay got in as Senior Cheerleaders.

Our Sophomore year started off with a bang when several courageous girls were initiated by the Pep Club. Diane was the first to have a boy's class ring, but Marlys ran a close second. A "few" of the brains (???) took Latin and that class was a gay place. They never did have their Roman Banquet, though. (And after Miss Lawler bribed them with it all year!) On "Circus Day", May 7th, a few from our class dressed as clowns and trapeze artists, to serve at the Junior-Senior Prom.

When we were juniors, the excitement of being upperclassmen began. Remember our class play, and how much trouble Jerry M. (Pa) had singing "Ja-Da"?? Oh yes, and some of our more mischievous classmates painted "54" in bright red letters on the water tower that night. At homecoming, we set an "all time" record, by making our "fifth floppy float." I guess we never will be successful float builders. Our star center, Clyde (Buster) S., was seriously injured, so we lost him for the season. Our Junior year was topped off by the success of the Prom. Of course, we had a few disagreements, but "Stairway to the Stars" met our expectations, and we felt we had succeeded when our plans were completed, and Sylvia and Jerry led the grand march.

Our Senior year has been the busiest of all; trying to meet annual deadlines, ordering class pictures, getting class rings, reviving the Chengwatana, and following our football and basketball teams. Soon we will be leaving our classes, activities, and sports behind us. It seems odd to think that when we were Sophomores, we were anxious to graduate. Now that the time is here, we begin to realize how much we'll miss P. C. H. S.

Class Will

We the Seniors of 1954 bequeath the following -

To the Juniors - Our enviable ability and dignity because we feel their need of it.

To the Sophomores - Our advise on going steady.

To the Freshmen - Our high marks and studious ways.

Yvonne Anderson - leaves her copies of "True Romance" to Aldora Houdek.

Kaye Baker - leaves Dalton's Atomic theory to future chemistry students.

Cecelia Baum - leaves her Wrigley's Spearmint chewing gum to Donna Yost.

Johnnie Becvar - leaves all his sophomore girl friends. Sob!!

Delores Bell - doesn't leave her "ring" to anybody.

Bonnie Benson - leaves her refined speech to Dennis Bowers.

Melvin Besser - leaves his seat in noontime study to Alvin M.

Boyd Bowers - leaves his line with the girls to Jon Stratte.

Leslie Brogren - leaves his courage to tackle physics and trig. in the same year to any ambitious underclassman.

Carole Burmeister - leaves her role as shortest girl in the class to Pat Fuller.

Marvin France - leaves his scarlet blushes to Abie Korf.

Doris Habrman - leaves her yodel still ringing in the auditorium.

Gaye Hoefler - leaves her queenly qualities to Carol Carlson.

Dee Erickson - leaves her pickled appendix to the biology department.

Mary Sauser - leaves her staunch Republican viewpoints to Jim Gillespie.

Janet Schwartzwald - leaves her baby-blue "Schwartzwald" eyes to "GeGe" Gillespie.

John Fiebing - leaves his deep, melodious voice to Albert Harvey.

Bob Fischer - leaves his position as star tenor in the chorus to Allan Thiry.

Pat Flynn - leaves her lady-like sneeze to Alf Grant.

Ron Haavisto - leaves his sideburns to Ronnie Baker.

LeRoy Hippen - leaves his ability to judge "chicks" to Jim B.

Joyce Hischer - leaves her freckles to Elaine Wood.

Arlene Holetz - leaves her bus tickets to Rush City to Barb France.

Jerry Carson - leaves his place on the tape recorder to any long-winded Junior Democrat.

Lawrence Chalupsky - leaves his wavy blond hair to Bob Orvis.

Gordon Sandeen - leaves his ability to read "Time" cover to cover to Sam Carlson.

Alden Sigurdson - leaves his Scandinavian ancestry to Donald Tollefson.

Ronnie Spickler - leaves his record of 19 letters to be broken by an athletic Junior.

Edwin Stoffel - leaves his friendly bespectacled countenance to Mike Selleck.

Rodney Swanson - leaves his 30 day hybrid oat seeds to the Ag. Department.

Donna Thieman - leaves her happy go lucky ways to Darlene Miska.

Leo Towle - leaves his carefree bachelor existence to Oscar Thorson.

Tom Maher - leaves his lopsided grin to Louie Shumway.

Bob Bjork - leaves his drawings of pickled earth worms to some lucky biology student.

Marilyn Clyne - leaves her daily letter writing to Joyce P.
Pat Mills - leaves her slimness to Deanne Clark.
Marlys Montgomery - leaves her successor as pianist to endure the sour notes of the chorus.
Grace Odendahl - leaves her good behavior to be divided equally among Chuck Shimek, Jon Challeen and Andy Neville.
Alice Jean Pixley - leaves her luminous pearl fingernail polish to Mary Ann Janssen.
Pat Plessel - leaves her ability to get town passes to Darlene Wanous.
Jerry Thiry - leaves his collection of absentee slips to Bob Yost.
Dorothy Mann - leaves her friendly smile to Wanda Bell.
Clyde Shumway - leaves his mathematical formulas to Bill Roubinek.
Bea Smith - leaves her ability to charm the Mora boys to Darlene Krube.
Veronica Stoffel - leaves her dimple to Donna Mae Erickson.
Garland Teich - leaves his Ipana smile to Fred Hodge.
Shirley Rose - leaves her long black eye lashes to Shirley Orvis.
Janet Howard - leaves her collection of boys' rings to Margie Purdy.
Jerry Martinson - leaves the future Joe Dimaggios to fight over his short stop position.
LeRoy Morris - leaves his job of hauling the Sophomores to the roller rink to Ray B.
John Maher - leaves his slow Texan drawl to Sue Prairie.
Ted Nelson - leaves his ability to keep the Henriette bus in an uproar to Kenny Hady.
Lowell Neilson - leaves his German vocabulary (Guten Abend) to John Baur.
Sharon Okeson - leaves her "trumpet tooting" to Nancy Selleck.
Dianne Olson - leaves her copy of "How to Marry a Millionaire" to Andy Edin.
Rich Ostrom - doesn't leave Pat to anyone.
Joan Patterson - leaves her calm disposition to Esther Bell.
Iver Peterson - leaves his hot rods carved on the desks in Mr. Hanson's room.
Mary Ann Holetz - leaves her bottle of "Lite 'n Brite" to Jane B.
Jean Meyer - leaves her rosy cheeks to Ellen Novy.
Kay Metcalf - leaves her soft voice to Ted Larson.
Jo Wanous - leaves her attentive manner in the classroom to Curtis Fore.
Marlys Vacinek - leaves her robust giggle to Delores Becvar.
Sheila White - leaves her Irish eyes and temper to Corrine Johnson.
Bernard Wurm - leaves the trophy case full of gold F.F.A. emblems.
Sylvia Wood - leaves everything all over.
Mary Ann Miller - leaves her first chair in the sax section to Kay Nelson.
Lucille Morris - leaves her "goldilocks" to Lois Finger.
Mary Kay Nilsson - leaves her ambition to let her hair grow to Mary Ann Vach.
LeRoy Mann - leaves his arguments with Alvin M. to Jack Swedlund.

The Dragonette

Vol. I

Pine City, Minnesota, 1964

No. 1

City Elections Held

The City Elections were held last Tuesday. The newly elected officials of Pine City are: Miss Arlene Holetz, mayor, who won with her campaign promise, "There will be a Chrysler in every garage;" Ted Nelson, the new councilman, who is promising higher pig prices for farmers; and Janet Howard, Justice of the Peace, who predicts that during her administration there will be a record number of marriages.

President Appoints Cabinet

Gerald D. Carson, Democratic President of the U. S. revealed yesterday that he will have only one cabinet member. Miss Sylvia Wood, famed stateswoman, noted for her efficiency plan, the "Leave it where you lay it," method will take over all cabinet duties.

Miss America Crowned

Donna Thieman, formerly a Pine City girl, was crowned Miss America yesterday at Atlanta, Georgia. The judges chose her for her wavy black eyelashes and gleaming smile. Among her prizes are a Cadillac and a trip up the Mississippi on Veronica Stoffel's Streamlined Steamer.

Circus Coming Soon

The Maher Bros. Circus will arrive here next Friday. They will give two performances daily, at 2:00 P. M. and 8:00 P. M. Their show includes--

Leo the Lion Tamer Towle.

Bouyant Bowers - the trick diver who will dive 100 in. into a sopping wet sponge.

Jumping Johnny B. - the trampoline artist.

Booming Baum - the human cannon ball.

Daring Delores - the daredevil driver who will drive through a flaming hoop at 201 miles per hour, and many others.

Local News

A patent has recently been granted on the Patterson-Peterson Pancake Turner which is guaranteed not to throw pancakes more than 5 feet in the air.

The Shady Lane Spinsters' Society had its annual election at their business meeting Wednesday afternoon. The newly elected officers are: President - Carole Burmeister, Vice President - Dianne Olson, Secretary and Treasury - Kay Baker.

Dr. Clyde Shumway is opening his new office on the corner of 3rd Avenue and Main St. Thursday. He operates for anything except appendicitis, which his chief aid, Darlene Erickson, specializes in.

In this year's annual Pillsbury Bake-off, Minnesota had three national winners. They are Jo Wamour, who won with her delectable mud pies, Jean Meyer with her candied crabs, and Mary Ann Miller whose shredded soap soup was highly praised by the judges.

Grand Opening

Bob and Marlys, the new owners of Pine Camp, announce their grand opening Saturday. The well known dance band, Whoopy LeRoy Hippen and all his little Chicken Pickers will play that evening. The band includes Woodwind Wurm, Saxophone Swanson and Nimble Nielson. Their guest artists will be the famed western vocal duo, "Doris and Morris."

Local Girl is Olympic Winner

Miss Kay Metcalf recently won the Olympic shot-put contest at Helsinki. When asked to what she owed her remarkable strength she replied, "I owe all my strength to a daily diet of Okeson's Oatmeal."

Store Burns

Martinson's second-hand store burned to the ground at 2:30 yesterday afternoon. The store contained articles borrowed in High School. According to Fire Chief Sandeen, the cause of the fire is still unknown.

Music

Mr. Robert Bjorkov, the Russian chorus line director, is bringing his group to the U. S. A. for a six month tour. Leslie Brogenski is starring in the latest hit, "If You Knew Olga." Their first appearance will be at Pixley's Playhouse on Brunswick Road.

The famous opera singer, Sheila Von White will sing tonight at the Pine City Auditorium. She will be accompanied by her trusty curtain puller, Edwin Stoffel. Miss Von White has just returned from a tour of upper Slobovia.

Books

Miss Mary Sauser's latest book, MY BOY ROY depicts the life of cowboy star Roy Rogers.

Dr. G. Thiry's book on THE NEWEST CURES FOR SCHOOL SICKNESS is his best to date.

Pat Plessel's double length novel DARK EYES gives a day to day account of life in an average Middle West high school.

All of these books are among the best sellers at Besser's Bargain Booknook.

Rose Room Theater

Shirley Rose
Now Showing
"Gentlemen Prefer Red Heads"
Co-starring
Yvonne Monroe Anderson and Grace Russell Odendahl
with
Marvin Colburn France and Richard O'Day Ostrum coming soon--
A Thrilling Western Drama
"Galloping Hearts"
starring
Hoppy Haavisto and the bewildering new star, Bonnie Benson.

Ads

Dancing lessons (pretty girls cheaper rates) at Spickler's Swing Studio.

For the latest in men's clothing visit Dot and LeRoy at "Mann's for Men" in Brook Park.

Attention Typists!!

To learn how to keep your finger nails long and still hit top speeds, come in and see a free demonstration at Flynn's Fine Pharmacy.

Also featured at Flynn's Schwartzwald's Hour sleeping pill. (guaranteed to let you sleep through any class or study hall.) Hischer's Famed Freckle Remover, and Vacinek's Vital Vitamins to get that much needed vim and vigor!!

Do you want to be a blonde??

Come to the Morris Beauty Salon for expert dye jobs. Also featured, Mills Miraculous Mud Packs.

Feed

Get it on the E-Z Payment plan at the Sigrudson-Feibing Feed store--now featuring Sigrudson's Slurpy Slop for bigger and better pigs.

Now singing at Bea's Ballroom

Famed Blues Singer, Marilyn (Boo Hoo) Clyne, accompanied by Gorgeous Gaye and her harmless clarinet.

Buzzy's Blabber

(answers to any and all questions by Buzzy know-it-all Teich.)

Dear Mr. Teich:

I am a young business woman and I fear I am very innocent for all my friends use a term I don't understand. I don't want to ask them because I am afraid they will laugh at me. I'll appreciate your help in defining "necking" for me.

Thank You

M. K. Nilsson

Dear M. K. N.:

Here is the definition you requested: "Necking" is the elongating of one's neck in order to reach a desired destination.

B. T.

Dear Mr. Teich:

I am a boy who likes to study, and I like the serious side of life. I have a problem. The girls just won't leave me alone. I think the trouble is my wavy blond hair. I have tried everything to discourage them. What can I do?

Perturbed Chalupsky

Dear Perturbed:

Dye your hair and see a psychiatrist.

B. T.

Reckless driver Fined

Miss Mary Ann Holetz was arrested and brought into court in Mora last week. She was charged with speeding on her motor cycle within the city limits. Judge Fischer fined her 25 cents and warned her to be more careful.

Activities



Football



Jon Stratte



Bob Fischer



Boyd Bowers



LeRoy Hippen



Johnny Becvar



Ronald Spickler



Bob Orvis



Clyde Shumway



Jerry Carson



Louis Shumway



Bill Roubinek



Row 1: Virgil Miska, Leslie Brogren, Bob Fischer, LeRoy Hippen, Jerry Carson, Mr. Saunders, Ron Spickler, Mr. Nell, John Becvar, Boyd Bowers, Clyde Shumway, Jon Stratte, Bob Orvis; Row 2: Henry Cornelius, Don Bible, Alvin Mortenson, David Fischer, Leslie Benson, Frank Peil, Bill Roubinek, Roger Jewell, Louie Shumway, Dennis Bowers, Jim Blanchard; Row 3: Jerry Yost, Kent Warhol, Doug Blomberg, Jim Kuzel, Oscar Thorson, Allan Thiry, Andy Edin, Luther Morris, Ray Stevens, Gary Rohweder, Frank Lynd.

The Pine City Dragons regained the title of "King of the Gridiron", by winning the District 25 championship without a conference defeat. Led by Captain Ronald Spickler, the Dragons ran wild over all conference opponents. Two non-conference defeats by Lakeville and St. Paul Park kept Nell's men from enjoying a perfect season.

One of the most thrilling games of the season was played with a strong Mound eleven. Mound had tied the score with only a few minutes remaining, and everyone had settled for a tie, when Ronnie Spickler took the kick-off and ran it all the way back for the game winning touchdown.

Clyde Shumway received the award as the most "Valuable Blocker", and Jon Stratte was elected captain of next year's team.



Ronald Spickler

Season's Record

Pine City	28	Mahtomedi	7
Pine City	24	Lakeville	27
Pine City	26	Forest Lake	12
Pine City	33	Moose Lake	7
Pine City	51	North Branch	7
Pine City	12	St. Paul Park	13
Pine City	40	Barnum	12
Pine City	26	Mound	20



Basketball

Row 1: Doug Blomberg, Bob Fischer, Ron Spickler, Jon Stratte, Andy Edin; Row 2: Mr. Skoglund, Jerry Yost, Bob Orvis, Jim Gillespie, Dennis Nelson, Dale Otterdahl.

The Pine City basketball team played under a new coach, Stuart Skoglund, this season.

The Dragons lacked size and experience but never showed a lack of spirit. They started poorly but as the season progressed the young squad, with only 2 seniors, showed a definite improvement. Since the squad was not hit hard by graduation, coach Skoglund is looking forward to a successful season next year.

Track

The Pine City Track team came within a hair of winning the 1953 District 25 Championship. The young squad, coached by Mr. Saunders, impressed everyone with its fine showing in the District meet at North Branch. Going into the relay, the last event of the meet, the Dragons were only a few points from the lead, and a first place in the relay meant the Championship. However, fate wasn't to have it that way as the Dragons finished in second place, only a couple of points behind North Branch. The Dragons weren't hit hard by graduation so the prospects are bright for the "54" season. Ron Spicker was appointed captain of the track team.

Baseball

The 1953 Baseball Squad played good baseball under Coach Les Nell and ended the season with 2 wins and 5 losses.

The best game of the season was played with Forest Lake when the Dragons gained a 5 to 4 victory in the ninth inning.

The Dragons lost only three players by graduation so the team has bright prospects for the "54" season. Jerry Martinson was elected captain of the 1953 team.

Season's Record

Pine City	4	Grantsburg	7
Pine City	5	Forest Lake	4
Pine City	4	Lindstrom	9
Pine City	0	Hinckley	8
Pine City	4	Chisago City	9
Pine City	7	North Branch	3
Pine City	1	Rush City	6

Band



Majorettes: Sandra Barnes, Joy Doran, Karen Otto, Marilyn Clyne, Pat Gebert, Karen Challeen, Deanne Clark; Row 1: Mr. Halling, Charles Shimek, John Chalupnick, Sharon Janke, Martha Gillespie, Colette Ostrom, Rosemary Byrne, John Bauer, Nancy Selleck, Loren Erhart, Morris Smith, Roger Plessel, Delores Becvar, Donna Yost, Sylvia Wood, Sheila White, Kay Metcalf; Row 2: Janice Rypkema, Ronald Hawkinson, Arthur Smith, Pat Shuey, James Carlson, Areatha Rike, Janet Rypkema, Mary Kay Nilsson, Georgiana Gillespie, John Noreen, Janice Clyne, Doris Caroon, Kay Nelson, Beatrice Smith, Bob Bobzin, Joan Chalupnick, Lois Finger, Beverly Beavers; Row 3: Ted Larson, Andy Edin, Dan Boo, Beverly Kutzke, Elaine Wood, Gaye Hoefler, Darole Powers, Cleo Clem, Ruth Turgeon, Mary Ann Miller, Sharon Okeson, Louis Shumway, Dallas Lloyd, Frances Nelson, Mike Selleck, Clyde Shumway.

The band plays a very important part in school activities. It has assisted in assemblies, and some of its members formed a German Band which has also performed for various occasions. For home basketball games the band is divided into two sections, which play alternately.

The band enjoyed a new experience this year, formation marching. The occasion for the display was the Homecoming football game, where they performed during the evening.

Under Mr. Halling's direction the band is a practicing and working group not only during the school year, but also during summer months. Their schedule is busy and varied.

Chorus



Row 1: Mr. Oldenburg, Sharon Janke, Delores Bell, Donna Yost, Nancy Maher, Janet Schwartzwald, Ann Marie Minar, Deanne Clark, Karen Challeen, Mary Kay Nilsson, Marlys Mae Vacinek, Dorothy Mann, Delores Becvar, Sue Prairie; Row 2: Ardis White, Janet Howard, Kay Nelson, Joan Chalupnick, Sylvia Wood, Carol Nordrum, Beverly Kutzke, Bernice Russell, Joyce Jenson, LaVonne Rohweder, Sharon Okeson, Jane Blanchard, Darlene Krube, Eldora Houdek, Lois Finger; Row 3: Doris Habrman, Shirley Caroon, Karen Otto, Marlys Montgomery, Elaine Wood, Wanda Bell, Joyce Hischer, Mary Ann Miller, Francis Nelson, Cleo Clem, Joan Patterson, Laura Grover, Alice Osterdyke, Pat Gebert, Bea Smith, Kay Metcalf; Row 4: Pat Fuller, Ellen Bell, Arlene Holetz, Donna Mae Erickson, Shirley Bergstrom, Doris Caroon, Ruth Turgeon, Beverly Tuma, Mary Ann Janssen, Mary Ann Soukup, June Bettinger, Carol Carlson, Barbara France, Kay Baker, Cecelia Baum, GeGe Gillespie, Darlene Erickson, Sheila White.

The members of the Boys' and Girls' Chorus together make up the mixed chorus.

This group under the direction of Mr. Oldenburg sings at various school programs and concerts. Some of it's members sang in the All Star Chorus which sang at Hinckley last fall.

The chorus is planning several numbers for the spring Festival.



Row 1: Mr. Oldenburg, Bob Bjork, Allan Thiry, Jerry Martinson, Jim Gillespie, Jim Blanchard, Richard Ostrum, Herbert Myers, Henry Cornelius; Row 2: Jon Challeen, David Miska, Jerry Thiry, Jim Holler, Clyde Shumway, Roger Jewell, Jon Stratte, Alvin Mortenson, Charles Shrieffles; Row 3: Kenneth Hady, Jerry Carson, Abel Korl, Bob Fischer, Alfred Grandt, Dick Kosik, Donald Tollefson, Ronald Baker, John Becvar.

"B" Band



Row 1: Sharon De Boer, Sandra Hanson, Sharon Hulett, Judy Froelke, Darlene Grothe, Marlys Tollefson, Arlys Skalicky, Beth Ann Roegge, Michael Johnson, Nancy Selleck, Judy Nell, Dale Teich, Morris Smith, Loren Erhart, Tom Blumhoefer, Mr. Halling; Row 2: Barbara Halling, Deanna Schwartzwald, Jane Engel, Karen Sindelar, Judy Seibert, Garland Kotek, Bob Bobzin, Nancy Maher, Dick Larson, Roger Nelson, John Bauer; Row 3: Gail Hinze, Collette Ostrom, Sandra Barnes, Joy Doran, Lucille Saumer, Hazel Nordstrom, Martha Gillespie, Ronald Smith, Louis Shumway, Jon Challeen, Jim Kuzel, Roger Plessel, Murray Edin, James Carlson, Doug Nelson, Dick Wenborg.

Here are some of the members of the future high school band. These students are in the process of learning to play their instruments well enough to join the "A" Band. Some of the members are already in "A" Band, but are learning a second instrument, and so are members of the Junior Band.

Mr. Halling directs and instructs these students in their music.



Majorettes

"The leaders of the band" during the marching band season is this group of seven girls. Their efforts are much appreciated and admired by those who have watched them perform. The group will miss their very able leader, Marilyn Clyne, who will graduate this year.

293-34-BH

Left to Right: Deanne Clark, Joy Doran, Pat Gebert, Marilyn Clyne, Karen Otto, Sandra Barnes, Karen Challeen.

Student Council



Row 1: Mr. Oldenburg, Judy Sommer, Kathleen Teich, Harold Anderson, Gary Sommer, John Bauer, Janet Rypkema, Darlene Erickson, Ellen Bell, John Chalupnick, Richard Buckley, Dennis Roubinek, Loren Erhart; Row 2: Martha Gillespie, Sheila White, Doris Carlson, Myrna Johnson, Kay Nelson, Ann Marie Minar, Arthur Smith, Margaret Rasmussen, Darlene Krube, GeGe Gillespie, Pat Flynn, Doris Habrman, Joy Doran, Barbara Miller; Row 3: Cleo Clem, Sandra Barnes, Deanne Clark, Karen Challeen, Sharon Roubinek, Dan Boo, Jim Gillespie, Bob Fischer, Bernard Wurm, Ray Stevens, Donald Tollefson, Bob Bjork, Kent Warhol, Neil Moe, Collette Ostrom.

The Student Council is the student government of the high school. Its members represent each Junior and Senior high school class. The council's adviser, Mr. Oldenburg, is present at the meetings to discuss school problems and represent the administration.



Ardis White, Mary Kay Nilsson, Sheila White.

Trio

This is the first year that these particular girls have been singing together as a trio. They have sung at various community events and are planning an entry for the Spring Music Festival.

Pep Club



Row 1: Marilyn Burmeister, Lucille Saumer, Donna Mae Erickson, Sylvia Wood, Frances Nelson, Joyce Hischer, Delores Ovik, Gaye Hoefler, Arlene Holetz, Kay Metcalf, Sheila White, Carol Burmeister; Row 2: Bea Smith, Janet Howard, Virgene Anderson, Pat Flynn, Mary Kay Nilsson, Esther Bell, Beverly Kutzke, Ruth Turgeon, June Bettinger, Jane Blanchard, Janet Schwartzwald, Alice Osterdyke, Barbara France, Delores Bell, Darlene Erickson, Row 3: Ardis White, Laura Grover, Shirley Caroon, Wanda Bell, Marlys Montgomery, Sandra Barnes, Karen Chal-leen, Mary Ann Miller, Deanne Clark, Doris Caroon, Darlene Krube, Marilyn Clyne, Donna Yost, Carol Carlson, Cecelia Baum.

One Day last fall I'm sure you noticed the queer young women who invaded the peaceful atmosphere of our school in clothing which was a bit "different". These were the new members of the Pep Club who were being initiated, and who make up the club.

The club has officers and a constitution and the main purpose of its members is to make themselves heard at games.

Cheerleaders

This year two new cheerleaders, Sue Prairie and Carol Carlson were chosen to combine their efforts with Janet Schwartzwald and Mary Kay Nilsson. The result was four hard working cheerleaders who have done a wonderful job of keeping school and team spirit alive even when spirit wasn't easy to muster.

Sue Prairie, Carol Carlson, Janet Schwartzwald, Mary Kay Nilsson.



Library Club



Row 1: Mr. Huber, Darlene Erickson, Donna Yost, Virgene Anderson, Carol Burmeister. Row 2: Mary Kay Nilsson, Frances Nelson, June Bettinger, Arlene Holetz.

The job of keeping the library neat and orderly is that of these girls who donate their time for this purpose. Though considerably smaller in number than in other years the group has done an excellent job. They have been working under Mr. Huber's direction and have enjoyed their work very much this year.

Annual Staff



Row 1: Bob Fischer - Business Editor, Mary Kay Nilsson - Features and Art, Sylvia Wood - Editor, Darlene Erickson - Senior Class; Row 2: Robert Bjork - Business, Gerald Martinson - Sports, Gaye Hoefler - Business, Marlys Montgomery - Typist, Sheila White - Activities.

F. F. A.



Row 1: Mr. Hoberg, Robert Teich, LeRoy Mann, Ronny Haavisto, LeRoy Hippen, David Fischer, Gerald Mills, Gerald Kosak, Donald Bible, Roger Stevens; Row 2: Lowell Neilson, David Miska, Jerry Thiry, Donald Tollefson, Bernard Wurm, Alden Sigurdson, Frank Peil, John Maher, Donald Wurm; Row 3: Kenny Hady, Jim Doran, Robert Benson, Gerald Anderson, Leslie Benson, Roger Vacinek, Rodney Swanson, Jerome Kryzer, James Sward, William Moller.

Again the Pine City F. F. A. boys have enjoyed a very successful year in membership, classroom work, and judging contests. Also during the past year, the boys have developed some very fine projects in general livestock and gardening.

The judging teams did an outstanding job last May at the State Judging Contest which was held at the University of Minnesota. At the State Contest they won many awards.

Pine City had the State Champion Poultry Judging Team. The members of this team were Bernard Wurm, Alden Sigurdson, John Maher, and Donald Wurm. Pine City had the three high men in the state in this contest.

Pine City had the State Champion Dairy Products team. The members of this team were Rodney Swanson, Jerome Pobuda, John Ouradink, and Joe Shatava. Rodney Swanson was State High Man.

Pine City had the State Champion Horticulture team. The members of this team were Ted Nelson, Lowell Nielson, and Howard Larson. Ted Nelson was State High Man.

Pine City had the State Reserve Champion Forestry team. The members of this team were Robert Teich, Robert Caroon, Ray Stevens, and Fred Hodge. Robert Teich was State High Man.

On October 3, 1953, the Pine City F. F. A. entered 3 teams in the National Junior Vegetable Growers Contest at the University of Minnesota. Pine City had the 3 high teams, and the members of these teams were Bernard Wurm, Donald Wurm, Rodney Swanson, Alfred Grandt, Richard Kozik, Lowell Neilson, Ted Nelson, John Ouradink, and Eldon Finger. Bernard Wurm was State High man and Donald Wurm was second high man. This winning gave our F. F. A. the opportunity to enter the National Meet at Tulsa, Oklahoma.

On October 7, 1953, the Dairy Products team went to Waterloo, Iowa, to participate in the National Meet. This team won the Silver Emblem. The team members were Rodney Swanson, Jerome Pobuda, John Ouradink, and Eldon Finger.

On October 12, 1953, the Poultry team went to Kansas City, Missouri, to participate in the National Contest. This team won the Gold Emblem award. The team members were Bernard and Donald Wurm, Alden Sigurdson, and John Maher.

On December 4, 1953, our Horticulture team went to Tulsa, Oklahoma, to participate in the National Junior Vegetable Growers Contest. This team won ninth place. Most of the teams entered were college students. The members of this team were Bernard Wurm, Rodney Swanson, Ted Nelson, and John Ouradink.

At the district Cow Clipping Contest which was held at Foreston, Minnesota, last November, Pine City placed second. Rodney Swanson did the clipping.

F. F. A.



Row 1: Allan Thiry, Bob Caroon, Jack Roubinek, Lloyd Swanson, Jerome Felton, John Chalupnick, Donald Klände, Dennis Grover; Row 2: Roger Haavisto, Melvin Besser, Tom Stoffel, Robert Lindstrom, Gary Sickler, Jimmy McClellan, Jerry Schloesser, Ronald Senske, Dwayne Finger; Row 3: LeRoy Anderson, Frank Lind, Donald Cummings, Wallace Baum, Herbert Anderson, Charles Swanson, Garland Teich, Iver Peterson, Ted Nelson, Roland Patterson.

Cheaper By The Dozen

Mr. Gilbreth is an efficiency expert in the strongest sense of the word. His efforts to teach his family these methods are a constant source of humor. The twelve children do not know his reason for this "minimized motion" and, consequently, often become involved in disagreements with their father.

The play ends with a touching scene in which Mr. Gilbreth leaves for Europe, never to return, and his family are left to put his rules into effect.

Cast

Mr. Gilbreth Jerry Martinson
Mrs. Gilbreth Mary Kay Nilsson
Ernestine Sylvia Wood
Frank Robert Bjork
Jackie Darlene Erickson
Dan John Becvar
Bill Boyd Bowers
Fred Lowell Neilson
Anne Gaye Hoefler
Lillian Doris Habrman
Martha Janet Schwartzwald
Mrs. Fitzgerald Jeannie Olson
Dr. Burton Robert Fischer
Joe Scales Richard Ostrom
Miss Brill Arlene Holetz
Larry Jerry Carson
Stage Manager Marlys Montgomery

One Foot In Heaven

The Spences were a bit disappointed when upon their arrival at the new Methodist charge, they found both the parsonage and some of the congregation in poor condition. Their two children were quite skeptical as to the kind of friends they would find here, and altogether disapproved the move.

Dr. Romer proved to be a good friend to the Spences and helped the pastor to become acquainted with the church problems.

Mr. Spence's diplomatic tactics smooth over many ruffled feelings among the parishoners. During the course of time the family became so attached to their enlarged circle of friends that when, at the end of the play, they again prepare to move on, they are reluctant to leave.

Cast

Rev. William H. Spence Dan Boo
Hope Spence Beverly Kutzke
Hartzell Andrew Edin
Eileen Karen Challeen
Dr. Romer Fred Hodge
Louise Sandra Barnes
Maria June Bettinger
Molly Carole Carlson
Ronny Ronald Baker
Letty Wanda Bell
Mrs. Sandow Ardis White
Mrs. Digby Doris Caroon
Georgie Charles Shimek
Mrs. Cambridge Deanne Clark
Mrs. Jellison Darlene Krube
Major Cooper Jim Gillespie
Bishop Sherwood Charles Thieman
Fraser Spence Michael Selleck
Stage Manager Donna Mae Erickson

March of Dimes Show



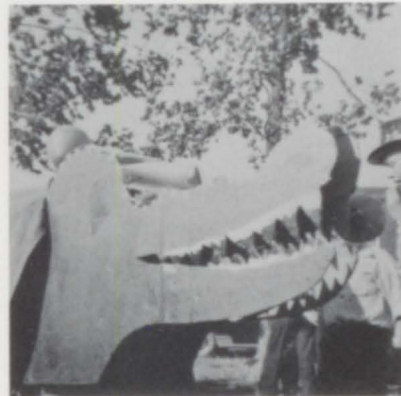
January was highlighted by the March of Dimes benefit show, a cooperation project of the Senior High School. Students from the upper three classes worked together to produce a program of acts performed by Senior High students. The Polio fund was considerably bolstered by the contributions.

Homecoming





Junior Float

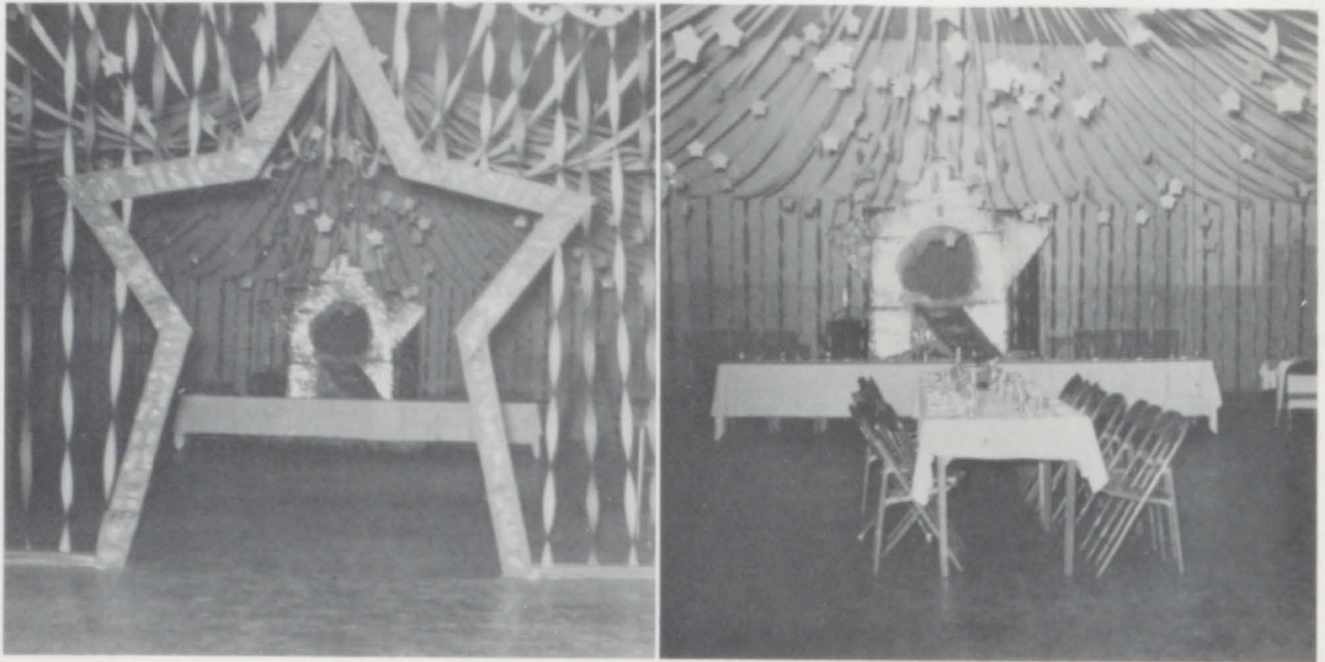


Senior Float

On October 2, we extended a special invitation to the alumni of P.C.H.S. to join us in the Homecoming Activities.

The afternoon events were the coronation, where Gaye Hoefler was crowned Queen of the 1953 celebration, and the parade, featuring floats revolving around our slogan - "Dehorn the Moose." The crowning success of the day, of course, was the Dragons' victory over Moose Lake at the game in the evening.

Prom



On May 8, 1953 the Armory took on a "starry" appearance as the Juniors entertained the Seniors at the annual High School Prom. The evening began with a banquet. Several of the members of the Sophomore Class, dressed in costumes befitting the theme "Stairway to the Stars", acted as waitresses and waiters. A program followed the banquet, and then we danced to the music of Dix Mann's orchestra. The efforts put forth into making the Prom were certainly rewarded by the success of the evening.





Patron's Page

The following businessmen gave the contributions that have made this annual possible. Our sincerest appreciation goes to them from the Annual Staff.

- | | |
|--|-------------------------------------|
| R. P. Allen Co. * | Fair Store * |
| Anderson's Feed Store | Family Theater ** |
| Biedermann's Red Owl Store * | First National Bank * |
| Blanchard's Bakery * | Flower Box * |
| Borchers Shoe Store | Food Guild Store, Brook Park |
| Bob's Standard Service * | Fowler's Concrete Products * |
| Brook Park Feed & Lumber Co. | Frances Ann Motycka * |
| Buckley Plumbing and Heating * | Frank's Barber Shop |
| Buselmeir Beauty Shop * | Froelke Bros. Implement Co. * |
| Buzzard's Greenhouse * | Gambles Authorized Dealer * |
| Challeen's Fairway Store * | Gebert's Welding and Machine Shop * |
| Clark Pennington ***** | Gehl Oil |
| Clyne Pontiac Sales and
Deep Rock Service Station * | George Clem * |
| Coast to Coast Store * | George Lehet * |
| Coca-Cola Bottling Works ** | Grant's Cafe * |
| Co-op Creamery, Rock Creek * | Hank's Garage, Brook Park |
| Dolan Chevrolet-Buick Co. * | Hanson's Service, Brook Park |
| Dorow Furniture Store * | Harold Anderson * |
| East Central Electric Association * | Holetz Motor Co. * |
| Edin Motor Sales * | Inter-State Lumber Co. * |
| Erickson's Store, Rock Creek * | Janke's Super Value * |

John's Jewelry *	Pine City Drug *
Johnson's Standard Service *	Pine City Fuel Co. *
J-T Eat Shop *	Pine City Hardware *
Lahodney Ladies Wear *	Pine City Launderers and Cleaners *
Lewis Olson Rock Inn, Rock Creek	Pine City Mercantile *
Lilja's Pharmacy *	Pine City Mill *
Dr. S. H. Lovold *	Pine City Radio *
Mason's Variety Store *	Pine Poker Pioneer *
Ma's Place *	Sauser's Our Own Hardware *
Mel's Texaco *	Sixty-One Way Cafe *
Murriel and Paul's *	South Side Produce
Nash Garage *	Dr. A. K. Stratte *
Nelson & Son *	Stan's Radiator Service
Dr. E. G. Nethercott *	Streamliner **
Nicols, Dean, and Gregg *	Swanson Funeral Chapel *
Dr. G. T. Olson *	Tom Henderson
Dr. L. W. Onken *	Topic *
Parrish-Boo Lumber Co. *	Town and Country Cleaners *
Peoples Oil Co. *	Mr. V. L. Vanstrom *
Pine Camp *	Wiedeman Appliance *
Pine City Co-op Association *	Witte Jewelry *
Pine Co-op Creamery Association *	

Answers to baby pictures

Row 1: Bea Smith, Jo Wanous, Cecelia Baum, Pat Mills, John Maher. Row 2: Bob Fischer, Sheila White, Bonnie Benson, Bernard Wurm. Row 3: Marilyn Clyne, Delores Bell, Kay Metcalf. Row 4: Jerry Carson, Sylvia Wood, Jean Meyer. Row 5: Alice Jean Pixley, Mary Ann Miller, Jerry Martinson, Arlene Holecz, Mary Kay Nilsson. Row 6: Marlysmæe Vacinek, Doris Habrman, Gaye Hoefler, Janet Howard, Sharon Okeson, Darlene Erickson.

