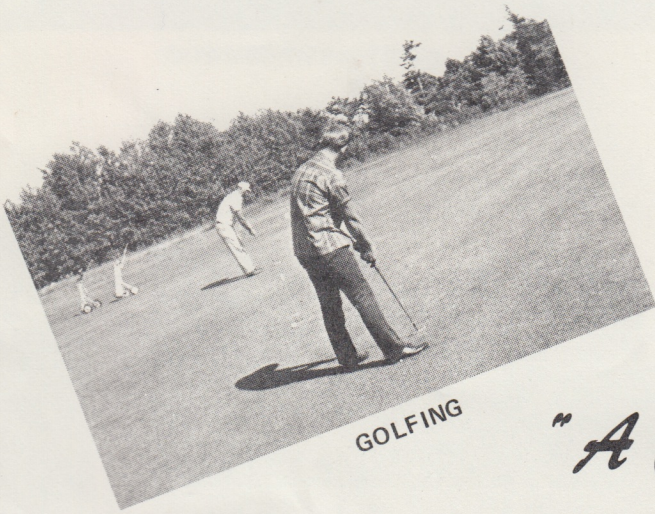
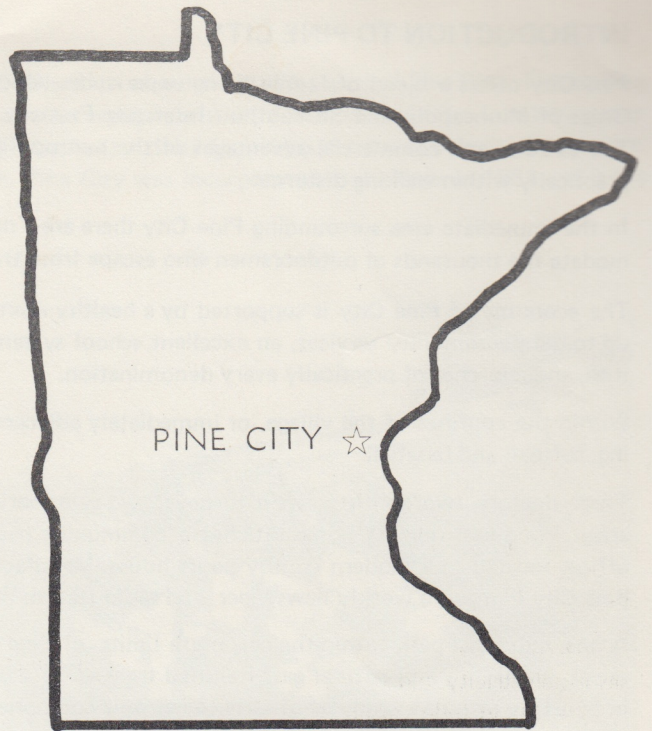
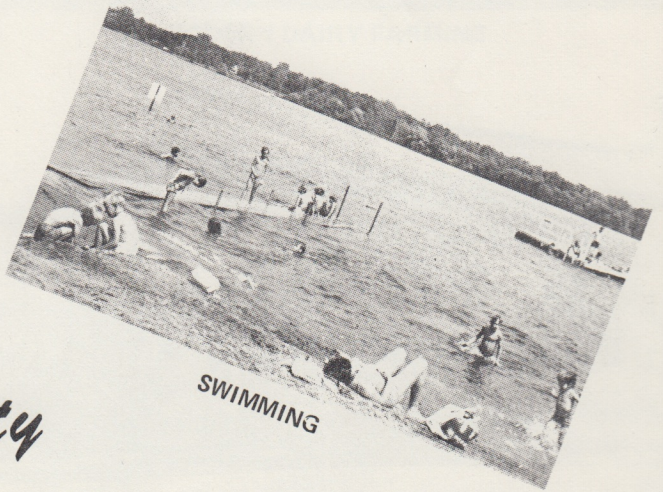


Pine City

MINNESOTA

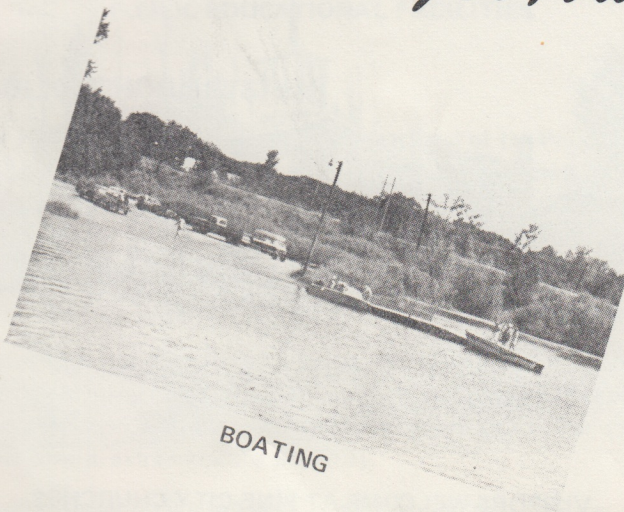


GOLFING



SWIMMING

*"A City
For All Seasons"*



BOATING



SNOWMOBILING

INTRODUCTION TO PINE CITY

Pine City offers a blend of family living experiences which are almost impossible to duplicate. Situated just 60 miles north of the Twin Cities of Minneapolis and St. Paul, on Interstate Freeway I-35, the 2,200 residents of the village enjoy the easy pace of country living. The cultural and commercial advantages of the metropolitan area are only an hours drive away and the lakes and woods, closer yet, are practically within walking distance.

In the immediate area surrounding Pine City there are a number of lakes woven through fine forestry, a country large enough to accommodate the thousands of outdoorsmen who escape from the cities each year and yet allow him the solitude he seeks.

The economy of Pine City is supported by a healthy mixture of agriculture, industry, tourism and retail trade. It is a modern village with up-to-date community services, an excellent school system, including a vocational training school, adequate medical personnel and facilities, and churches of practically every denomination.

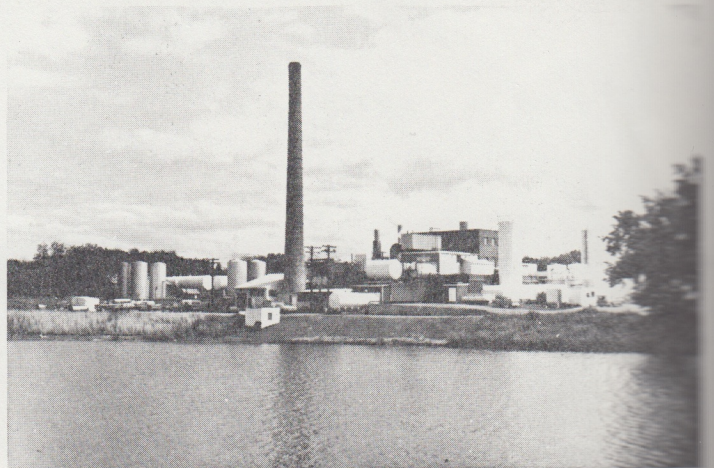
Within the confines of the village, or immediately adjacent to, one can enjoy golfing, swimming, boating, fishing, ice skating, snowmobiling, softball and baseball.

Three doctors, two dentists, five attorneys, two veterinarians, one chiropractor and one optometrist provide professional services for this area. A modern nursing home satisfies a community need and provides employment to many. Many work in the county and federal offices located in a modern county court house. Manufacturing firms provide employment to over 300 people. Local news media are the Pine City Pioneer, a weekly newspaper, and radio station WCMP.

A new industrial park within the corporate limits of Pine City provides space for new industries. Utilities include municipal water and sewer, electricity and natural gas. Railroad trackage is nearby and the municipal airport is only a few blocks away. Major industries now in Pine City include a producer of varied electronic component parts, a metal fabricating facility, pre-cast concrete plant, bottling company, meat processing plant and dairy farming. All of these firms are happy with the community. The Pine City Development Corporation has been helpful to industries coming to Pine City. We, who live here, enjoy it, we invite you to try it.



FIRST NATIONAL BANK



LAND O'LAKES DRYING PLANT



3M COMPANY



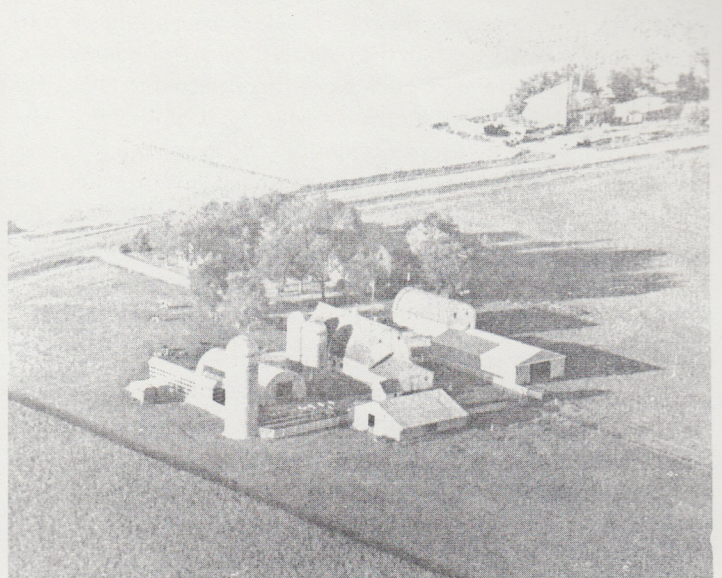
VISITORS WELCOME AT PINE CITY CHURCHES

PINE CITY HAS AN INTERESTING HISTORY

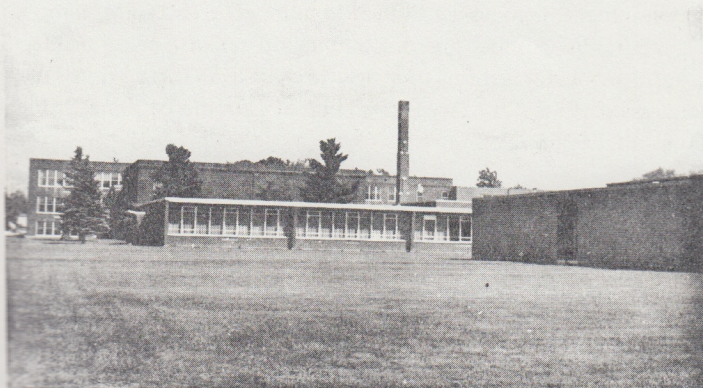
In 1804 fur trader Thomas Connor established a trading post on the shores of Snake River about three miles west of Pine City. This trading post has been reconstructed by the State Historical Society and is providing an interesting tourist attraction in Pine City. Lumbering provided the first industry in Pine City. As the trees were cut, agriculture took over and, today, dairy farming is the major industry in our area. Recently, new industry has provided the third phase of Pine City's growth. Pine City was incorporated as a village in 1881 and is the county seat of Pine County.



DOWNTOWN PINE CITY



MODERN DAIRY FARMING



PUBLIC EDUCATIONAL FACILITIES



AREA VOCATIONAL SCHOOL

PUBLIC SCHOOL SYSTEM

The 130 employees (86 of whom are teachers) of the Pine City Public School System try to provide a comprehensive educational program for 1600 students in grades K - 12. In an attempt to meet individual needs and provide enrichment, the elementary program features specialists in areas such as music, art, math, physical education and speech therapy -- in addition to regular classroom teachers and teacher aides.

Elementary, junior high, and high school all have strong special education and remedial reading programs with a favorable student/teacher ratio. Other social service professionals include school nurse, full-time counselor and school psychologist.

Junior high and high school students are encouraged to exercise individuality in course selection through a modified quarter system with electives in many fields. The 1966 building addition provides modern facilities for biology and chemistry labs, home economics room, business education and a fine library. More opportunities for students are added when one considers the sports program, band, chorus, and other diverse extracurricular activities.

Quality education is a top priority concern in Pine City.

POLICE PROTECTION

The Pine County Sheriff's Office is composed of the Sheriff, John Kozisek, Chief Deputy and seven full time deputies.

These men are responsible for traffic control on county roads, accident investigations, business, residential and cabin burglaries and all other types of crime reported within the county. They are also responsible for maintaining the jail facilities, keeping prisoners and the service of civil papers. Three of the deputies are contracted to two villages within the county. Two are responsible for police protection in Pine City and one is contracted to Hinckley. The county is reimbursed by the two villages for this service. The Sheriff's Department is also responsible for locating and apprehending runaway juveniles and prisoners that escape from any one of the three penal or correctional institutions located within the county. The Department also has a rescue unit recently donated by the Pine City Jaycees and equipped with funds and equipment donated by various organizations.

An airplane is also available for use in search and rescue missions. The Sheriff's Patrol Boat is used during the summer months to patrol the numerous lakes within the county.



POLICE DEPARTMENT

FIRE PROTECTION

Pine City has an active, well trained, thirty member volunteer fire department. It serves the village of Pine City and seven adjoining townships. Pine City has one of the most modern all volunteer departments in the state. The village is rated class 6 by the Fire Underwriters Inspection Bureau.

The firemen regularly attend meetings, drills and special classes to keep informed on up-to-date fire fighting methods. They are summoned to fires by an individual telephone system and by siren.

The equipment includes a 1,000 GPM pumper, a 750 GPM pumper, a 250 GPM pumper and a 1,600 gallon tanker. These trucks are kept, ready for action, in a new firehall. For further information, write: Pine City Area Chamber of Commerce, Pine City, Minnesota, 55063.

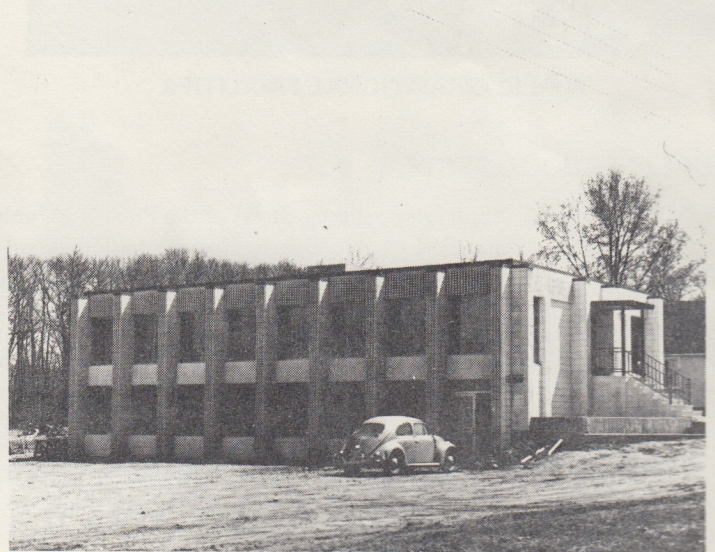
For further information write:
Pine City Area Chamber of Commerce
Pine City, Minnesota 55063



FIRE DEPARTMENT



NEW APARTMENT FACILITIES



ENTERPRISE OFFICE BUILDING