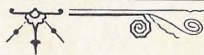


Pine City, Minnesota.

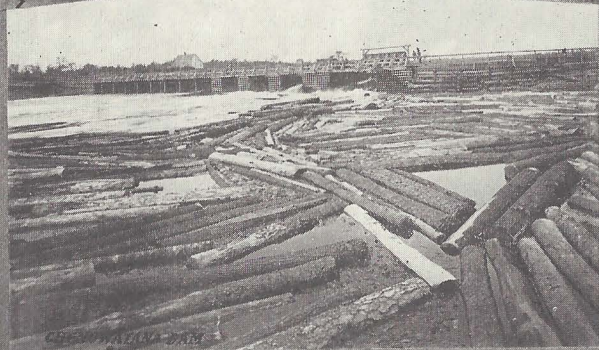
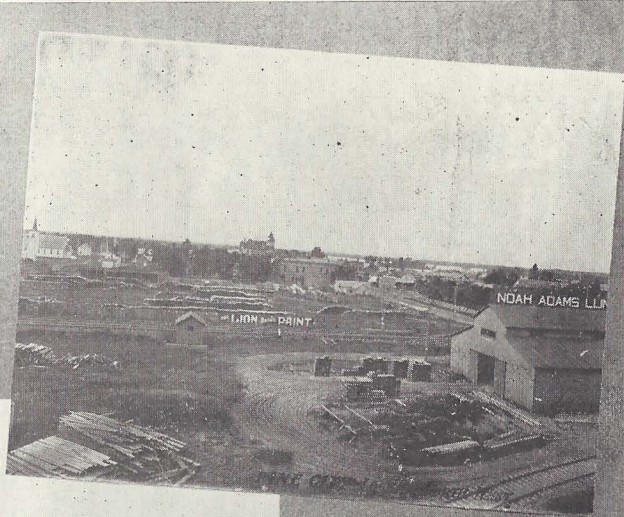
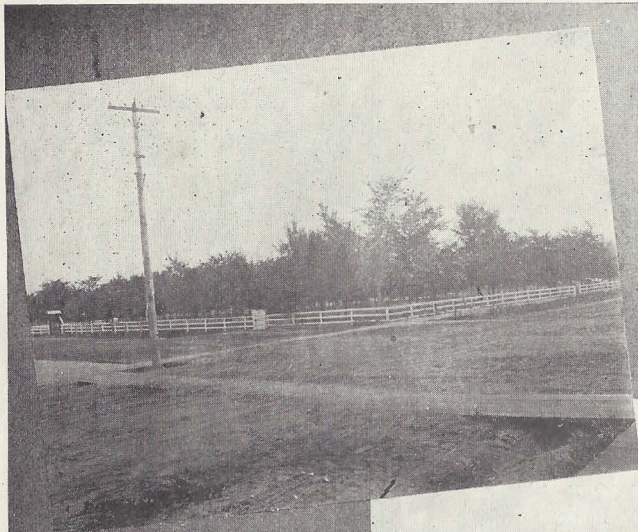
A Souvenir



Pine City, Minnesota.

Published by
WALL & HAINES,
16, 18, 20 N. Fourth Street,
Minneapolis, Minnesota

JULY, 1901.



Pine City, Minnesota.

It is not the purpose of this booklet to give a history of Pine City or Pine County, but rather in a brief way to show by pencil and picture the opportunities and advantages offered to the homeseeker, the sportsman and the pleasure hunter. There are many other places in this great northwest that offer openings for the homeseeker, and others offer much in the pleasure line, but none that combine all these features to a higher degree than this village and county.

Pine City is handsomely located on the Snake river at its junction with Cross Lake, the ground being sufficiently rolling to assure good drainage. It was platted in 1867, and incorporated as a village in 1881, and has been the capital of Pine county since the county's organization. It has never had a boom, but during the past ten years has enjoyed a vigorous and healthy growth, now boasting a population of about 1,200, its business men being enterprising, intelligent and prosperous. There are many fine residences and some good business blocks, frame buildings being gradually replaced by brick. Cross Lake, upon the banks of which the village is located, is a beautiful sheet of water six miles long and one mile wide, well stocked with game fish. Pokegama Lake is only three miles west, reached by boat through the broad and picturesque Snake river.

The transportation facilities are of the best. Located on the Duluth Short Line of the Northern Pacific railway 53 miles from the Twin Cities and 89 miles from Duluth and Superior, it has three fast passenger trains each way daily, and numerous freight trains.

The village is supplied with stores of all kinds, a flour mill, saw and planing mill, brewery, creamery, newspapers, saloons, etc., with some opportunities still open

for enterprising business men; is lighted by electricity, has local and long distance telephone, an abundance of pure drinking water, while its streets of sand and clay are always clean and dry, and bordered with beautiful shade trees. There is an excellent graded school and churches of the Methodist, Presbyterian, Catholic, German Lutheran and Seventh Day Advent denominations, and societies of Knights of Pythias, Workmen, Degree of Honor, Woodmen, Maccabees, Good Samaritans, Grand Army, Ladies of the G. A. R., Turners and Bohemian Workmen. There is a first-class band and orchestra, an efficient fire department, and a business men's association.

The favorite pastime is boating and fishing, for which the opportunities and facilities are ample. Several citizens have electric and steam launches, row and sail boats, and an unusually fine lot of row boats are kept in good condition and loaned to visitors at a small charge. There is no perceptible current in Snake river during the greater part of the summer, and a row up to Pokegama fishing grounds, a favorite spot with the finny tribe, a picnic dinner, and a quiet ride back to town in the evening, is a pleasant way to spend the day if you make your headquarters in town. A first-class steamboat, carrying 80 passengers, is always available for excursions.

If you enjoy camping, gather together your outfit and come on. There are any number of places where you may find abundance of pure water, a smooth sandy beach and plenty of trees—three prime requisites of a camp site. So pronounced are these advantages that several gentlemen from St. Paul, St. Cloud and other cities have erected cottages in which they spend a few weeks each summer. No charge is made for the use of



INDIAN CAMP, POKEGAMA LAKE.

land on which to pitch your tent. Picnic parties have their choice of many beautiful and romantic points on the shores of Cross and Pokegama lakes, and the several islands in these lakes and Snake river.

Copper Mining.

What now seems destined to become by far the most important industry in Pine county is the mining of copper. In 1874 J. Bennett Smith, who was at that time the general agent for the Lake Superior & Mississippi railway, was sent out to prospect the lands tributary to that road for minerals. He discovered indications of copper on the Snake river four miles east of Pine City, which fact he reported to the president of the road, who gave no importance to it. In 1879 Mr. Smith with two associates acquired 320 acres of this land in fee and one-half interest in the minerals in 440 acres more, and during the next four years \$20,000 was spent in prospecting, when one of the partners became embarrassed financially and the work ceased. Subsequently Mr. Smith became sole owner of the property. Two years ago an option was given K. D. Chase, who failed to do anything. The option expiring last fall Mr. Smith resumed prospecting, and organized a stock company with \$250,000 capital. Several prospect shafts have been sunk, one at a depth of 35 feet showing a wonderfully rich deposit. Altogether eight promising veins have been discovered in a cross-section of 500 feet, with rich deposits, getting better as the shafts go down. A permanent shaft is now going down to a depth of 150 feet or more, from which cross-sections will be cut to tap all the veins. Several experts have lately investigated the mine and agree in the opinion that copper in paying quantities exists there, and it is only a question of development to show one of the richest deposits of copper ever uncovered. Thus Pine City will soon become more famous for its great

copper mine than for all its other attractions. Mr. Smith has recently refused some very tempting offers for his property.

Pine County.

Pine county was established as a subdivision of Minnesota territory March 31, 1856, and in 1860 had a population of 92, which has now reached about 12,000. It is in central Minnesota north and south, and on the eastern border. It is irregular in form, its greatest length being 42 miles, and its greatest breadth 36 miles. Its area is 1444 square miles, or 924,160 acres, or 5,776 farms of 160 acres each.

Pine county was once heavily timbered, but the pine has been cut off and manufactured locally or driven down its many streams into the St. Croix and on to Stillwater. It is now well timbered with hard woods, including oak, ash, maple, elm, birch, poplar and others. Along the streams the soil is generally sandy, and along the Kettle river where fine building stone is produced, the land is somewhat rocky. There are a few sandy ridges, but the soil has considerable mixture of clay which makes a fine sod, and Pine county contains the best grass lands in Minnesota. Grasses from this county have taken prizes at the state fair, have been the admiration of all and have surprised the farmers of Southern Minnesota. This county is naturally adapted to vegetables, small fruits, small grains, grasses, dairying and stock raising.

Wild lands in this county range in price from \$2 to \$15 per acre, depending more on location than the quality of the soil. Fine lands conveniently located can be bought at from \$6 to \$10 per acre, while improved farms may be had at from \$10 to \$30 an acre, the neighborhood, development and country roads having much to do with prices. The county is well provided with living waters. The St. Croix river makes most of its eastern boundary, while the Snake and Kettle rivers cross it, and many streams



LODGE OF MEDICINE MAN OF POKEGAMA CHIPPEWAS ON LAKE POKEGAMA.

have their sources in its lakes and feed the Snake, Kettle and St. Croix. A hundred little lakes dot the surface of the county, and the waters of the lakes and streams all abound in fish.

In population Pine county is cosmopolitan, having almost every European nationality, but none strong enough to run things. There are numerous postoffices, schools and churches of the various denominations conveniently located throughout the county, indicating a prosperous, intelligent and God-fearing people. The county is crossed by the Northern Pacific and Great Northern railways.

Beautiful Pokegama Lake.

Minnesota has many picturesque lakes and summer resorts, but none more beautiful than Pokegama, with its forest fringed banks, sandy beaches and natural parks. This lake is about five miles long by two miles wide. It is situated about three miles from Pine City, and is a broadening of the Snake river. This lake is of historical interest. On its banks one of the first missions in the northwest was established; the first printing press set up in Minnesota was put into operation at this mission and from time immemorial the banks of the lake were a favorite camping ground for the more or less noble red man, and are now the home of a small band of Chippewas. About four years ago Capt. August Bergman erected a commodious hotel at the most beautiful spot on the banks of the lake for the accommodation of those desiring a nice quiet place for an outing, yet easy of access, where the best boating and fishing may be had. This is named Pokegama Park Hotel, and is fitted up in excellent shape, the table being supplied with the very best. Special low rates are made to families and parties who desire to make an extended stay, and everything possible is provided for the convenience and comfort of

guests. A post office called Bergman has lately been established here for the accommodation of the guests. This ideal summer resort is located about midway between the Twin Cities and the head of the great lakes, with many passenger trains daily on the Northern Pacific railway. The steamer Victoria makes regular trips from the Park Hotel connecting with each passenger train at Pine City. The finest fishing and hunting in the state are to be found at Pokegama, and the scenery is unsurpassed. The grounds about the hotel are spacious, well kept and homelike. Capt. Bergman gives personal attention to the wants of his guests and oversees the management. A large number of pleasure and fishing boats are at hand and every accommodation is provided. Nature has done much to make this an ideal outing place, and the hand of man has provided the comforts and conveniences of every day life. Before deciding upon your next outing place investigate the advantages of Pokegama Lake and the Park Hotel.

Capt. August Bergman was born in Sweden in 1860, came with his parents to America in 1869, locating at Braham. In 1883 he went to Minneapolis and engaged in contracting and building, where he erected some of the finest buildings in the city. In 1897 he came to Pokegama, built the Park Hotel and established the summer resort. Capt. Bergman is a thorough gentleman and knows how to treat his customers to make them feel at home and enjoy themselves.

WALL & HAINES,

General Book and Law Brief Printers,

MINNEAPOLIS, MINN.



SCENE ON THE ST. CROIX RIVER.

Business and Professional.

Noah Adams Lumber Company, dealers in lumber and all kinds of building material, headquarters at 1229 Guaranty Building, Minneapolis, and branch yards in several places, established the yard here in June, 1899. This firm handles annually a very large amount of lumber and have a reputation for honorable dealing and selling at low prices in every place they operate in. The officers are Noah Adams, president and treasurer; G. K. Adams, secretary; incorporated with a capital of \$50,000. The manager of the local yard is James F. Miller. They have a large shed here and most of their lumber is kept under roof.

G. J. Albrecht, county treasurer, was born in Plymouth, Wis., April 7, 1866. He was educated in the public schools, then entered a bank, where he spent three years as clerk. In 1885 he went to Phillips, Wis., where he served as book-keeper for a large lumber firm; in 1888 he went to Hankinson, N. D., engaging in merchandising until the fall of 1889, when he removed to Hinckley, Minn., and engaged as book-keeper for the Brennan Lumber Company until the business was wiped out by the great fire of 1894. In the fall of that year he was elected to his present position, being three times re-elected, which speaks eloquently of the satisfaction he is giving his constituents. He is an efficient and accommodating official—the kind it pays to retain in position. He is also engaged in buying and selling lands in this vicinity, and has a list of improved and wild lands from which anyone may make a satisfactory selection. In 1890 he was married to Clara L. Wescott and they have two children.

Dr. E. E. Barnum, physician and surgeon, was born in Seneca county, N. Y., April 23, 1851. He received his education at Waterloo, N. Y., two years at Hamilton College at Clinton, N. Y., taking his degree of M. D. at Ann Arbor, Mich., in 1876, receiving special diplomas in physical diag-

nosis and surgery, surgical anatomy and diseases of children. He is a member of the State Medical society, the American Medical association and the American Association of Life Insurance Examining Surgeons. He began practicing in Paint Creek, Mich.; afterwards practiced one year at Ann Arbor. In 1878 he located at Glyndon, Minn., where he practiced until 1882, then two years at Eyota, then six years in Minneapolis, and ten years ago came to Pine City, where he has built up a large practice, in which he has been very successful. He is medical examiner in several old-time and assessment life insurance companies. He served as county physician in Clay county a number of years and ever since he came to this county. He was married to Rosamond C. Kelsey in 1878 and has a family of four children, two sons and two daughters. His eldest son, Eugene Ward, is marshal of the village, and his eldest daughter, Kate J., is a teacher in the public schools. Mrs. Barnum was formerly a teacher in the government Indian schools at Baxter Springs, Indian Territory, and afterwards took a partial medical course at Ann Arbor, Mich.

Adam Biedermann, agricultural implements of all kinds, blacksmith shop and horseshoeing. He is agent for the McCormick machines. He carries the largest line of machinery of any firm in this vicinity, and has built up a large business. He is a shrewd and honorable business man, in whom the buying public have every confidence. He was born at Star Prairie, Wis., in 1868. He learned blacksmithing at Baldwin, Wis., conducted a shop two years in St. Paul and came to Pine City in 1890 and started a blacksmith shop and two years later added farm machinery. He is married and has a family of four children.

L. P. Blihovde, new and second-hand furniture and farm machinery of all kinds, is agent for Champion binders and mowers. Has been in business here since February 1, 1901, and has already built up a good trade. He was born in Vernon county, Wis., February 2, 1862. He was educated



SCENE ON THE ST. CROIX RIVER.

in the common schools, spent four years in Chicago and then went to Brookings, S. D. After fourteen years spent in South Dakota he came here and engaged in business. He is a good business man and is meeting with excellent success. He is married.

R. H. Blankenship, superintendent of schools of Pine county, was born in North Carolina, December 22, 1866. His education was received at Flag Pond University of Tennessee, he afterwards taking a business course at the Sauk Center Business College. He entered school work twelve years ago and was principal of the schools at Willow River from 1891 to 1896, when he was elected county superintendent, serving in the latter position continuously since and giving the greatest satisfaction to teachers and taxpayers. He is a diligent student and a painstaking official. He is married and has one child.

H. Borchers, exclusive shoe store, the only one in Pine City, carries a very extensive and complete stock of shoes of all grades, gloves and mittens. He is a thorough workman and does all kinds of repairing with neatness and despatch. He was born in Germany, April 29, 1854, came to America in 1871, locating at Lake City, Minn., where he worked at his trade until 1881, when he came here and engaged in business. He began in a small way and by strict attention to his business, dealing honorably with his customers, he has built up a fine trade. He is an enterprising and shrewd business man, one of the most successful in this section of country, and is always willing to do his share toward building up his town and county. He served three years on the city council and one year on the board of health. He is married and has a family of two sons.

J. Y. Breckenridge, postmaster, insurance, and dealer in drugs, medicines, fancy goods, sundries, paints, oils, wall paper and fishing tackle, has the only soda fountain in the city. This is one of the best fitted drug stores in Northern Minnesota, and carries at all times a full and complete stock of everything usually to be found in a drug store. Mr. Breckenridge was born at North Barrington, Vt., May

7, 1864. He was educated in the common schools, then went to Windsor Locks, Conn., where he resided four years. In 1882 he removed to St. Paul. He was engaged with a railroad contracting firm four years as manager, and in 1886 came to Pine City and engaged in the drug business, which he has continued since. He burned out in 1897, but immediately rebuilt and continued. He was appointed postmaster by President Harrison, serving four years, and was again appointed postmaster in January, 1900, by President McKinley. He is now serving as president of the Business Men's association, and served two terms as village president. He is a member of the Republican congressional committee for Pine county and a member of several societies. He is a successful and progressive business man, one who takes a lively interest in the welfare of his town and county. He is married and has a family of two sons and one daughter.

Burger Bros., saw, shingle and planing mill, C. B. and A. C. Burger, proprietors, was established in 1889 by Weber & Burger Bros. Mr. Weber retired in 1896. They make a specialty of custom sawing, and saw both hard and soft wood, buy logs and sell lumber and building material, and are doing a good business. A. C. Burger has charge of the business, C. B. Burger being now in Idaho. Mr. Burger was born in Rosendale, Fond du Lac county, Wis., and came to Rock Creek, this state, in 1874, and engaged in farming and lumbering; came to Pine City in 1889, which has since been his home. He has been a member of the village council for the past two years and served as justice of the peace and on the board of supervisors at Rock Creek. He is a Mason, Knight of Pythias, and Modern Samaritan.

First State Bank of Pine county, organized and began business in 1896; Capital stock, \$10,000. Deposits average about \$65,000; loans and discounts about \$62,000. The officers are F. A. Hodge, president; vice-president, Carrie E. Hodge; cashier, P. W. McAllen; assistant cashier, J. D. Boyle. A general banking business is transacted; farm loans are made and fire insurance is written. The banking



RESIDENCE OF HON. FRED A. HODGE.



RESIDENCE OF JUDGE E. VEEN HOVEN.
Photo by W. E. Poole.

house, a commodious, convenient and well furnished building, was erected in 1896. It is fitted with the best fire and burglar-proof vault and safe. The business is conducted along the most liberal lines consistent with safe banking. The officers are careful and experienced business men who enjoy the utmost confidence of the business public.

F. A. Hodge was born in Frankestown, N. H., August 18, 1854. He was educated in the common schools and the academy of his native town. At the age of 21 he came west to accept a position as bookkeeper and manager of a large store at Hinckley, where he continued until 1876, when he was elected county auditor and came to Pine City. Previous to this he served as county commissioner and school superintendent. He served as county auditor until 1894, when he was elected to the state senate, serving four years. Mr. Hodge is the owner of about 15,000 acres of fine farming lands in this and adjoining counties. He has dealt extensively for a number of years in real estate and pine stumpage. The lands he now offers are sold at from \$2.50 to \$10 per acre for unimproved lands. They are well situated and are of excellent soil, well watered, containing wood and hay land in abundance, making them ideal lands for dairying and stock raising; situated as they are equidistant from the twin cities and the great lake cities, an excellent market is always available almost at the doors of the county. Mr. Hodge is a hard worker, a careful and shrewd investor and has made a success second to no man in this section of the country.

J. A. Franta, harness shop.

Douglas Greeley, county auditor, was born at Stillwater, Minn., November 24, 1860. He received his education in the public schools of Stillwater and then engaged in logging and lumbering until 1894. In 1888 he removed to Hinckley, Minn., where he conducted a hotel from 1891 to 1894; in 1894 he was elected county auditor, being re-elected in 1896, 1898 and 1900, which seems to indicate that he is giving the people excellent satisfaction. He is a painstaking and accommodating officer. He is also proprietor of the

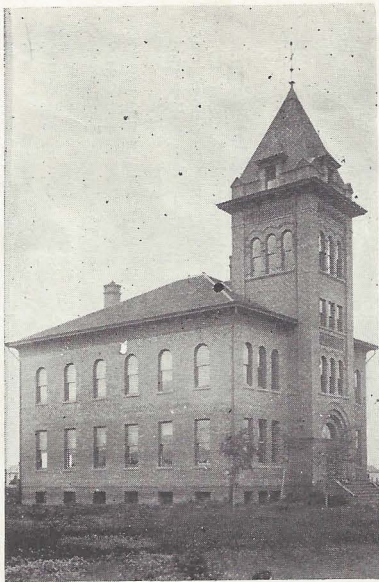
Pioneer House. Mr. Greeley is married and has a family of two daughters. He is a member of the Knights of Pythias and Ancient Order of United Workmen.

The Pioneer House, the only first-class hotel in Pine City, has been thoroughly overhauled since it came under its present management. There are thirty excellent guest rooms, the table is always supplied with the very best, and the hotel has a high reputation among travelers and tourists. Douglas Greeley, proprietor, and Louis Kronk, clerk, are good hotel men, and do everything in their power for the comfort of their guests. Rates are \$2.00 a day, but special rates are made to parties and families desiring to spend some time here for an outing. Rates will be furnished upon application and people will find this one of the pleasantest places in the northwest to spend a vacation.

W. F. Glasow, general merchandise.

R. J. Hawley, sheriff, was born in Canada, February 11, 1872. His parents moved to Lake City, Minn., when he was quite young and he was educated in the public schools of that city. In 1888 his parents went to Hinckley, which is still their home, and where he worked at lumbering. He served four years as village marshal and deputy sheriff and then engaged in business two years before being elected sheriff in 1898. He was re-elected in 1900, and is one of the best officials the county ever had and has an enviable reputation as a rogue catcher. He is popular with the voters and taxpayers and is likely to remain in his present position as long as he desires. He is fitted by nature, mentally and physically, for the position he holds.

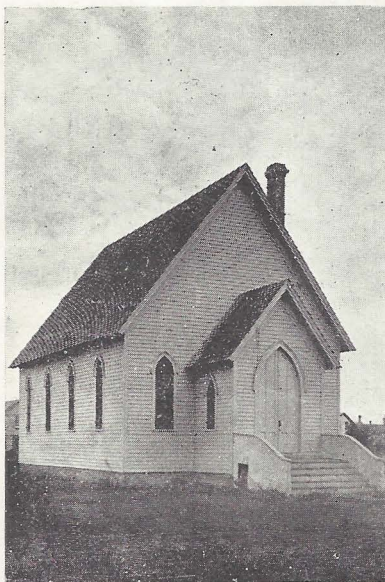
James Hurley, real estate, is the owner of a large amount of fine unimproved farm lands in Pine county, Minn., and Douglas county, Wis., also a number of business and residence lots in Pine City. He is the owner of the Hurley two-story double brick block, the largest and best in the city, built at nearly double the cost of any other business block here. It is fully occupied. His lands are offered for sale at from \$5 to \$15 an acre, and are good bargains. Mr. Hurley also owns and occupies the largest and one of the



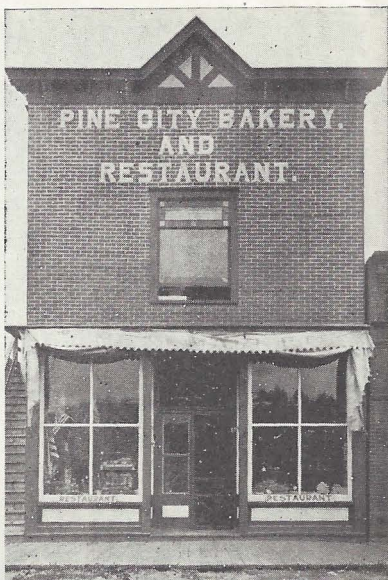
PUBLIC SCHOOL.
Photo by W. E. Poole.



CATHOLIC CHURCH.



PRESBYTERIAN CHURCH.
Photo by W. E. Poole.



J. VEVERKA BLOCK.
Photo by W. E. Poole.

finest residences in the city or this section of the state. He is a native of Vermont, born in 1853; his parents came to Minnesota when he was quite young, locating in St. Paul, later going on a farm in Anoka county. In the spring of 1871 he came here, working in the lumber camps and mills. He was elected register of deeds in 1878, serving fourteen years, then engaged in the wholesale liquor business with his two brothers as Hurley Bros. in St. Paul. He traveled for the firm in 1891-5, then quit the road and has since given his entire attention to the care and sale of his lands. Mr. Hurley is one of the most careful and successful business men of this part of the state, one who is most highly regarded in the business and social world.

W. Kubicek, restaurant and bakery, cigars, confectionery and fruits, has been in business here two years. He conducts a very neat and popular place which enjoys a large patronage. Rooms are also to be had by boarders. Mr. Kubicek was born in Bohemia; came to America at the age of 23, locating in Iowa. After residing in Milwaukee and North Dakota, he came here in 1895 and engaged in farming, which he still continues. He is married and has a family of four children.

Otto Kowalke, the O. K. Sample and billiard room.

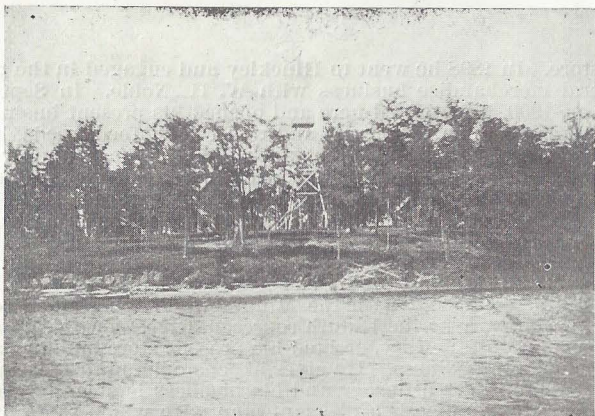
C. H. Laing, dry goods, notions, clothing, furnishings, shoes, groceries, crockery and provisions, carries at all times a complete and excellent stock in all lines. He is selling goods at a very close margin for cash, is a conservative and careful business man and is meeting with good success. He is a native of Sheboygan, Wis., born July 29, 1856. He was educated in Grand Haven, Mich., where his parents moved in 1867. His first business experience was in the dry goods store of W. C. Sheldon, where he remained four years. In 1876 he moved to White Cloud, Mich., where he was employed in the general merchandise store with P. M. Rodell for fourteen years. In 1890 he moved to Tower, Minn., where he remained four years with the Iron Range Cash Store; then opened a branch store for them at Virginia in 1896, removing the stock to this city and opening a

store. In 1898 he went to Hinckley and engaged in the general merchandise business with W. H. Noble. In September, 1900, he returned here and opened his present business.

J. J. Madden, wholesale and retail flour, feed, seeds, hay, grain and provisions, live stock, dressed hogs and wool, carries a very large stock and does a tremendous annual business. Besides his store he has a large warehouse at the railroad track. He doubtless sells more seeds in a season than any other house between St. Paul and Duluth. He was born in Canada, removed to Duluth in 1890 and engaged in the flour, feed and seed business until 1892; then became connected with the Minnesota Packing and Provision company as the Duluth representative. Two years ago he came to Pine City, erected his present store building and engaged in business. He gives his customers fair treatment at all times; is a pusher and his business is steadily growing. Mr. Madden is a pleasant man with whom to do business and is one of the most successful young men in northern Minnesota.

Julius Neubauer, blacksmithing and wagon making.

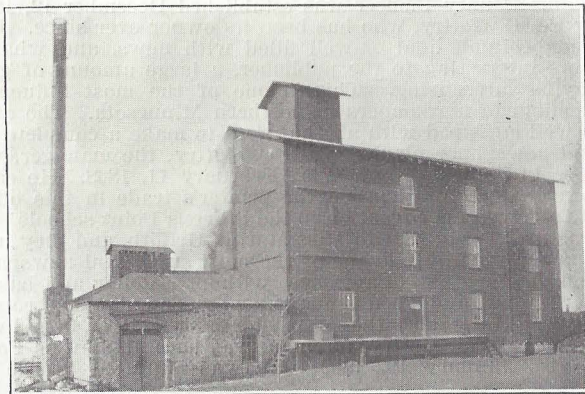
Pine County Pioneer was established December 12, 1885, by Ed. C. Gottry, who has been its owner ever since. It is a six column quarto, well filled with news, and what is more interesting to the publisher, a large amount of good paying advertising. This is one of the most influential Republican newspapers in northern Minnesota. The office is well equipped with all that goes to make a complete job and newspaper plant. Walt. C. Gottry, the manager, was born in Stevens Point, Wis., February 11, 1868. He came here in 1886 and learned the printer's trade in this office. He received his education in the Stevens Point schools. He was married in 1891 to Miss Marilla Griffith, and they have four children. He is one of the most successful newspaper men in the state. Came here without a dollar and has by hard work and good management accumulated a competence. He is also the proprietor of the Pine City livery stable. W. J. Gottry, foreman, was born at Stevens Point, Wis., January 19, 1859. He was educated in the high



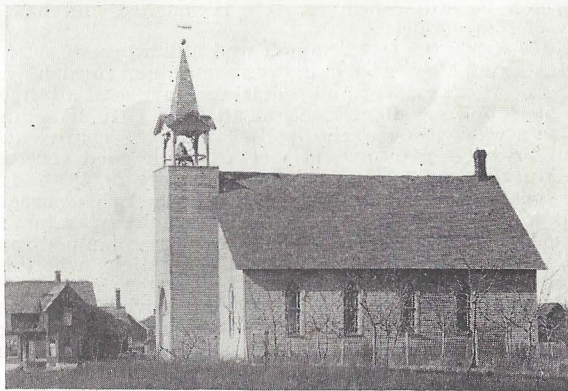
ON POKEGAMA LAKE.



[EXCURSION ON SNAKE RIVER.



PINE CITY ROLLER MILL AND ELEVATOR CO.



GERMAN LUTHERAN CHURCH,

school of that place, learned the machinist's trade, then engaged as fireman on a railroad, soon thereafter being given charge of an engine on the Wisconsin Central Railroad, continuing railroading about six years. Then resided in St. Paul eight years, then entered the dining-car service of the Northern Pacific for two years. He then came here and engaged in the printing business.

Pine City Mill & Elevator Company, R. M. Allen, secretary and manager. This company was organized in the fall of 1897, the mill having been erected in the summer. The capacity is 140 barrels of flour and 25 tons of feed daily. The elevator capacity is 10,000 bushels. The product of the mill finds a ready market in the eastern states, England and Ireland, besides supplying a large portion of the flour used along the line of railroad between St. Paul and Duluth. The machinery and equipment of the mill is modern and of the best in every respect. The brands of flour are Golden Key, Pride of Pine City, first patent; Buttercup, second patent. They buy all grain brought to this market, paying the very highest prices in cash. The steam is generated by wood fire, thus furnishing a good cash market for a large quantity of cordwood. It gives employment to a large number of men during the year and is an industry of great benefit to the town in every way. In the spring of 1900 this company purchased the electric light plant, installing a complete new set of machines, giving Pine City the best electric light plant of any town of its size in the state. About 600 lights are now furnished.

R. M. Allen was born in Luverne, Minn., October 1, 1875. His father owned a mill and Rube began learning the milling business when quite young at Lisbon, N. D., in his father's mill. He worked in several of the largest mills in North Dakota, and in 1896 he went to Minneapolis and engaged in the mercantile business for a year before coming here to organize, build and manage this mill. He served one year on the council and was elected mayor at the election last spring. Mr. Allen is one of the most thorough millers in the Northwest. He is also a hustling and care-

ful business man, who makes it a point to succeed in all his engagements.

Pine County Poker, was established 1897 by J. Adam Bede, who sold to J. F. Stone, who a little later sold to W. A. Simonton, the present owner. For the past year and a half Z. M. Edwards has had the management of the paper. The office is fitted up in first-class shape and is doing a good business. Mr. Edwards is a native of Red Wing, Minn., where he was born in 1858. His father was a Methodist minister, consequently he resided in many places. He followed his trade of printer and profession as a musician ten years in Colorado, eight years in Wisconsin and since that in Minnesota. He is instructor of the band in this village, known as the "Kid Band," which under his leadership has reached a high degree of proficiency. He is now serving his second term as village recorder.

Pine City Brewery, Theo. Buselmeier, proprietor, was established in 1880, in a small way, by Mr. Buselmeier's brother, who shortly died, and the present owner took hold in 1881. He is a practical brewer, and a good one. His beer was of such fine quality that its fame spread abroad and an increased demand ensued. Then he had to enlarge the brewery from time to time until now it has a capacity of thirty barrels daily. The brewery is now fitted out completely with the latest and best machinery. Mr. Buselmeier is a native of Baden, Germany, where he learned the brewery business with the greatest and best brewers of that country. He came to America and to Pine City in 1881. He is a careful and popular business man and that with the fame of his product has made him very successful. His goods are to be found in nearly every town on the St. Paul & Duluth line. He is married and has a family of six children. He is now erecting a \$5,000 residence.

A. Pennington, general merchandise.

Pine City Mercantile Co., a partnership of which F. C. Laird is president; H. W. Harte, vice president, and F. A. Brown secretary and treasurer, was organized and began business Dec. 1st., 1900. This firm handles every-



SCENE ON POKEGAMA LAKE.



SCENE ON POKEGAMA LAKE.

thing. It is a department store in the broadest sense. The lines consist of dry goods, ladies furnishings, clothing, mens' furnishings, boots and shoes, groceries, hardware, furniture, carpets, drugs, stationery, paints, oils, lumber and building material. Their sales room is 60x100 feet, store room 16x60, ware house 20x40. They also have extensive lumber sheds. They carry the largest stocks in each of these lines to be found in this section, employing 12 sales people regularly, and numerous others during the busy season. They have already established a very large business, which is rapidly growing. Mr. Laird, the president is a capitalist, interested in many business enterprises. F. A. Harte is a native of New York, born at Auburn in 1840. His parents moved to Wisconsin when he was very small. He engaged in the sawmill business at Elcho, Wis.; later traveled for two years and then engaged in business at Crystal Falls, Mich. In 1895 he moved to Rush City and engaged in business, coming here last fall.

Frank A. Brown, was born in Dodge county, Wis., Oct. 16, 1861. His parents moved to Oconomowoc when he was very young. He began learning the drug business at Eau Claire, Wis., and in 1889 engaged in the business at Mondovi, Wis., where he remained ten years. He went to West Superior and after eight months in business there, sold out to come here. Mr. Brown has been very successful in his business enterprises, is a capable and hustling business man, the kind that does so much to build up a new town. He is married and has one son.

A. W. Piper, furniture, undertaking, upholstering and upholstering materials, crockery, glassware, notions, pictures and picture framing, pianos and organs, wall paper, carpets and rugs. He makes a specialty of undertaking. His stock is always complete and up to date. He sells at close prices, gives all the same treatment, and has built up a nice trade. He was born at Baraboo, Wis. His parents moved to Owatonna, Minn., when he was very young. At the age of

fourteen years he engaged in the grocery business with his father, continuing until 1895, when he sold out and removed to Missouri. On account of his father's illness he soon returned to Owatonna, where he began clerking in a clothing store. In the fall of 1899 he came here and opened his present business. Mr. Piper is an aggressive and successful business man, the kind needed in a growing town. He is married.

Pine City Creamery, F. A. Hodge and P. W. McAllen, proprietors, is one of the industries that is aiding in the development of the country. They are now receiving an average of 4,500 pounds of milk daily, and the manufactured product is bringing the top notch price in the eastern markets. The proprietors are entitled to great credit for having taken the creamery when it was running at a loss, retaining it here and putting it on its feet.

Will E. Poole, photographer, is a late acquisition to the business and social circles of this place. He has fitted up a first-class gallery provided with all the latest and best paraphernalia. Mr. Poole is one of the best photo artists in the northwest, as well as an expert portrait painter, and Pine City is fortunate in securing him as a permanent resident. He is prepared to satisfy the wishes of his customers as to posing and lighting and the most artistic results are guaranteed. Mr. Poole is a native of Green Lake county, Wis., where he was born in 1870. His parents moved to Iowa when he was young. He engaged with a firm of portrait painters and traveled extensively through the northwest. In 1894 he entered the studio of J. R. Snow, now president of the Northwestern Photographers' association, at Mankato, where he learned photography, since which he has had charge of some of the best galleries in Minnesota. He is also a musician of some note.

H. J. Rath, clerk of the district court, was born in Germany, February 22, 1854. In 1874 he came to America, locating in Pine City and engaging in farming. In 1881 he entered a store as clerk, where he remained until 1886; was then appointed deputy sheriff, serving until 1892, when he



RESIDENCE OF S. G. L. ROBERTS.



S. G. L. ROBERTS' LAUNCH DEBORAH.

was elected to his present position, being twice re-elected by large majorities. He is an efficient and painstaking officer, very popular with the people. His position seems assured to him as long as he desires to retain it. Mr. Rath is one of the leading and most influential politicians of the Democratic persuasion, and there is nothing within the gift of his party that he could not have for the asking. He is married and has a family of seven children. He has a large business block and a fine residence in this city and has done much to advance the interests of the town and county.

S. G. L. Roberts, county attorney, with offices in the court house, was born at Dover, Del., January 15, 1861. He was educated at Baltimore City College; studied law at the Columbian University, Washington, D. C., taking the degree of Master of Laws from that institution in June, 1883. He then entered the office of the attorney for the District of Columbia, where he remained two years. In 1887 he came west and engaged in the practice of law in St. Paul, finally locating in Pine City in January, 1891, where he has practiced continuously since, having met with excellent success. He now stands in the front rank of the profession in northern Minnesota. He was elected county attorney in the fall of 1900, and is of course giving excellent satisfaction. Mr. Roberts owns a fine residence in this city and a large improved farm just east of town. He is married and has a family of four children.

Frank Radly, sample and pool room.

Frank Rybak, general merchandise, has the finest business block in the city. He has a fine stock and is doing a large business.

O. H. Schleusener, hardware, furniture, paints, oils, wall paper, pumps, tools, etc. His correct business methods and honorable treatment of his customers have built up a fine business which is constantly growing. Mr. Schleusener was born in Milwaukee, Wis., locating at Little Falls, Minn., with his parents. He was engaged in his father's large store as bookkeeper and manager for six years, where

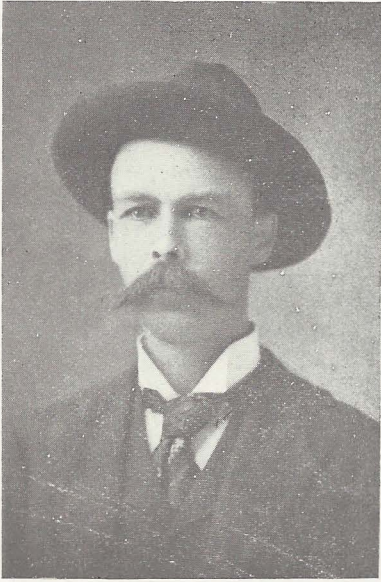
he gained a thorough knowledge of the business and a good commercial training, and to this training is due in a great measure his successful career here. He is one of the most careful and successful young business men in this section of the state.

F. E. Smith, hardware, stoves, tinware, guns, sporting goods, paints, oils, brushes, cutlery, tools and a full line of pumps and wind mills, has been in business here the last three years. He carries a complete up-to-date stock, sells at right prices, treats his customers right and has built up a nice business. He was born in Richville, St. Lawrence county, N. Y. He located in Montrose, S. D., in 1881, where he continued to reside until 1898, engaged in hardware and general merchandise business. He is an enterprising business man, conservative and successful in all his enterprises, an affable and pleasant man with whom to do business, and it is with pleasure we note his success since engaging in business here.

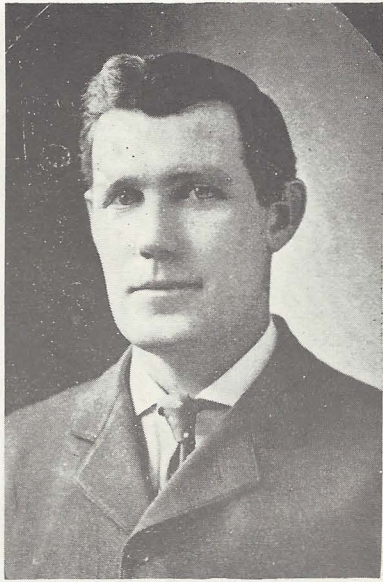
John Stochl, cigar manufacturer, began business here four years ago. His brands are Knights of Pythias, Great Leader, Sweet Rose Buds, ten cent goods; and Pine City Leader, Sure Winner, Columbo, five cent goods, and they enjoy a large sale in this part of the state. Mr. Stochl, who is a native of Bohemia, came to America in 1877. He was engaged in the cigar business eleven years before coming here. He is a first-class workman and has built up a good business.

R. C. Saunders, attorney-at-law, with offices in the Rybak Block, was born December 24, 1864, in Campbell county, Va. He was educated in private schools, graduated with degree of B. L. in the class of 1885 from the University of Virginia; settled at Hinckley, Pine county, in March, 1891; was elected county attorney in the fall of 1892, and again in 1898; moved to Pine City in 1899. He was the nominee on the Democratic state ticket for attorney general in 1900, and is a member of the State Reformatory board.

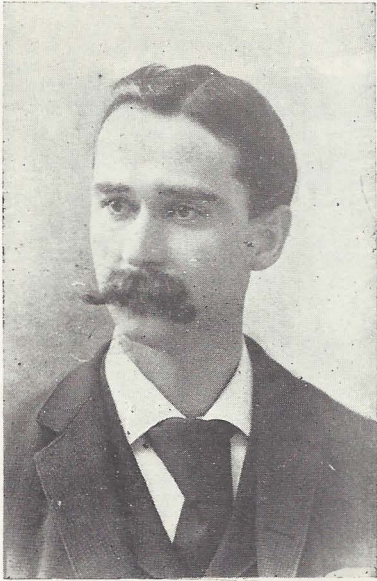
J. D. Vaughan, clothing, furnishing goods, shoes, hats, caps, trunks and valises, carries a good stock and sells at



W. E. POOLE, PHOTOGRAPHER.



SHERIFF R. J. HAWLEY.



A. W. PIPER.



COL. J. F. STONE.

close prices. He was born in Sunrise City, Chisago county, September 13, 1859. He followed lumbering for a number of years. In 1886 he was elected treasurer of this county, serving six years with excellent satisfaction to the people, then retired and engaged in his present business, at which he has been very successful. He is a popular and enterprising business man. He is married and has two sons and one daughter.

Col. J. F. Stone, real estate and copper mining, was born in Cornish, Me., March 2, 1839, and was educated in the common schools up to an academical course. He began his active life as a farmer and teacher. In 1859 he was married to Miss Emily J. McKusick, who died March 24, 1898, leaving one daughter, Mrs. Lizzie E. Breckenridge. He enlisted in July, 1861, in Company E, 9th Maine Volunteer Infantry and served during the war, after which he taught school and later became a contractor and builder. In 1878 he came to Pine City and had charge of schools here two years, and then engaged in the hotel business, which he continued until March, 26, 1898, and is still the owner of the Pioneer Hotel, all the time dealing in real estate. He is owner of much of the best property in town at present. He has served as president of the village council, court commissioner, etc., and has always been active in politics and an ardent supporter of the Democratic party. Colonel Stone conducted newspapers at different times and has written much poetry of merit and wields a trenchant pen generally.

E. Veen Hoven, judge of probate, was born in the Netherlands, Jan. 5, 1836. He was educated in Holland and studied for the law at the University of Cologne. In 1854 his anxiety to witness the Crimean war led him to leave the university, and he became correspondent for a French newspaper, and he witnessed most of the great fights. He returned to Holland, where his father was a lawyer and draughtsman of renown. He learned drawing in the leading shipyards. In 1864 he came to America, locating at New York, later to Detroit, and then went to Winona, where he entered the office of the land department of the Winona

& St. Peter railway as map draughtsman, making the first land maps for that company. In 1877 he came to Pine county, worked three years in a law office and was then elected probate judge, and by the grace of God and the favor of the people, which latter is due to his excellent conduct of the office, he has served continuously since and will doubtless remain as long in the office as he wishes. He has served as justice of the peace continuously for twenty-two years. His experiences in farming in the early days would make an interesting and laugh-provoking volume. He is married and has a family of six children. His eldest son is now in Manila in the government custom house, having gone there with the 13th Minnesota during the war.

Joseph Volence, meat market.

J. Veverka, proprietor of the Pine City Bakery and restaurant, established the business here six years ago. He carries also a full line of fruits, confectionery, cigars, tobacco, canned goods and groceries. He enjoys a large and growing business. He is a first-class baker and his product is gaining a wide sale in this vicinity. Mr. Veverka was born in Bohemia and came to America with his parents in 1865, locating in Chicago, three years later moving to Mower county, Minn. Six years ago he came here to engage in business. He has served five terms as alderman, being now a member of the board. He is an energetic and successful business man who takes a great interest in the welfare of the town. He is married and has a family of six children.

James H. Wandel, register of deeds, was born in Germany, November 24, 1862. In the spring of 1879 he came to America, locating in Pine City. Two years later he went to Hinckley and ran a meat market for a little over three years, and then entered the general store of Hurley Bros. as clerk for over three years, then returned to Pine City and clerked three years for A. Pennington. He then engaged in the merchandising business for himself. He served three years as village recorder, and in 1894 was elected register of deeds on the Republican ticket. On account



M. E. CHURCH.



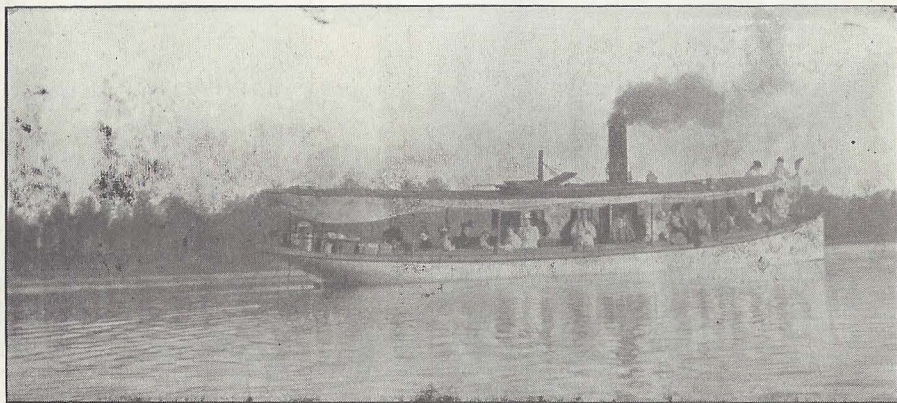
COURT HOUSE.

of giving good satisfaction he was re-elected in 1896, 1898 and 1900 by large majorities. He is a very competent and painstaking official and popular. He is married and has a family of two daughters and two sons.

G. H. White, agent for the Northern Pacific Railway & Express company, was born in Brighton, Iowa, where he entered the office of the Rock Island railroad in 1887 and began learning the telegraph business. He afterwards worked in a number of offices before coming to Pine City in 1899 to take charge of this office. He is efficient and obliging.

Dr. R. L. Wiseman, physician and surgeon, was born at Stockton, Minn., July 9, 1874. At the age of three his

parents moved to Zumbrota, and in 1883 to St. Paul. He was educated in the public schools of St. Paul, graduated from the manual training school in 1892, then engaged in the hardware business at Harris, Minn. In 1894 he entered the University of Minnesota, graduating from the medical school in 1897. He immediately came here and opened an office. He is meeting with excellent success and has built up a large practice. He is a member of the A. O. U. W., M. W. A., K. O. T. M. & M. S., and is examiner for each of them. He is a member of the city council and board of health and one of the county physicians. He is also a member of the fire department and county coroner. He was married in 1900 to Miss Mary Louise Davis of St. Paul.



STEAM LAUNCH, "THE STOWE."



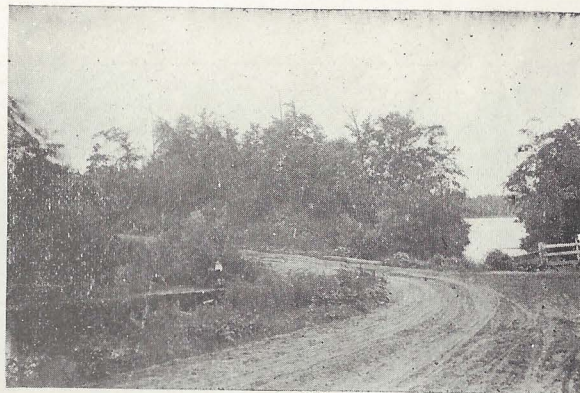
H. J. RATH'S BUSINESS BLOCKS.
Photo by W. E. Poole.



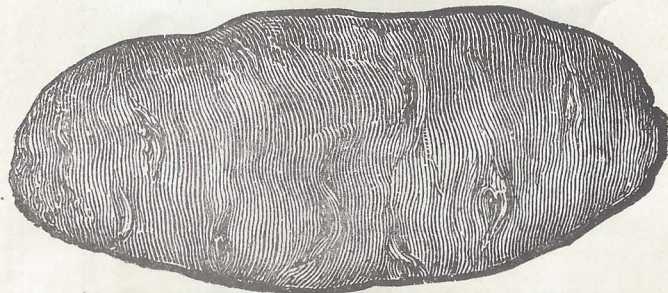
F. E. SMITH'S BLOCK.
Photo by W. E. Poole.



RESIDENCE OF JAMES H. WANDEL.
Photo by W. E. Poole.



BETWEEN CROSS AND DEVILS LAKES.
Photo by W. E. Poole.



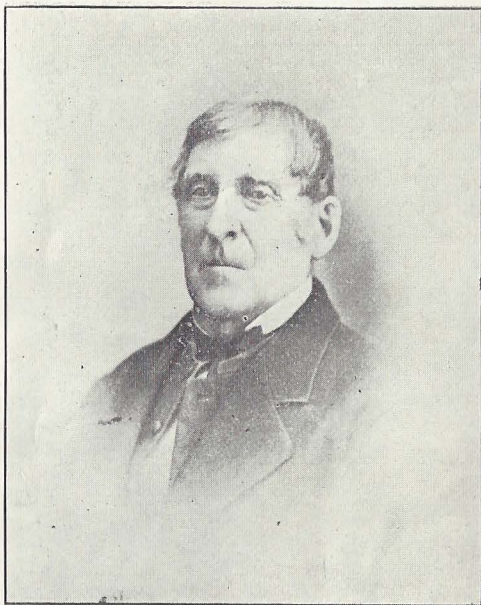
A PINE COUNTY STAPLE.



*I am forgetting the things that are
behind and pressing forward*

to those that are before!
Elisabeth Taylor Ayer

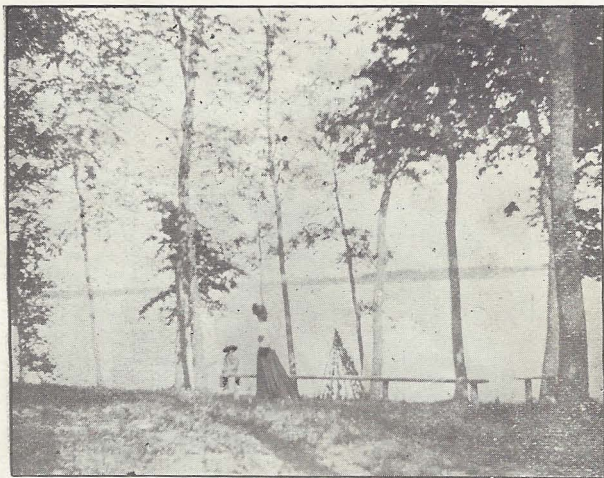
Mrs. Ayer came to Northern Minnesota as a Missionary in 1832, and to Pokegama Mission in 1836. She resided in Minnesota until her death, greatly loved by all her acquaintances.



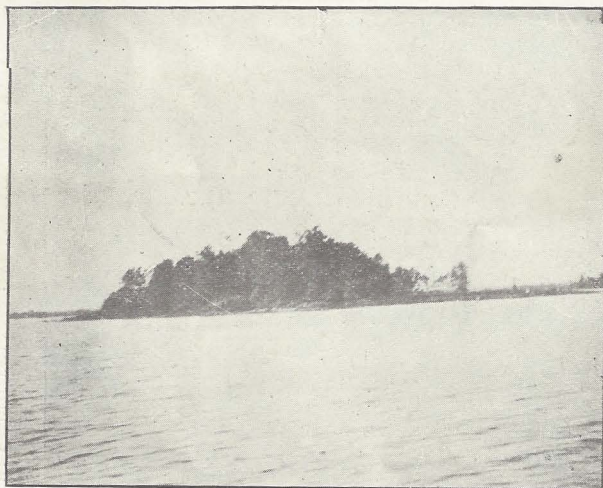
REV. BOUTELLE, EARLY MISSIONARY AT
POKEGAMA MISSION.



AUNT SUSAN, CHIPPEWA SQUAW, AGE 115 AT
DEATH 1900.



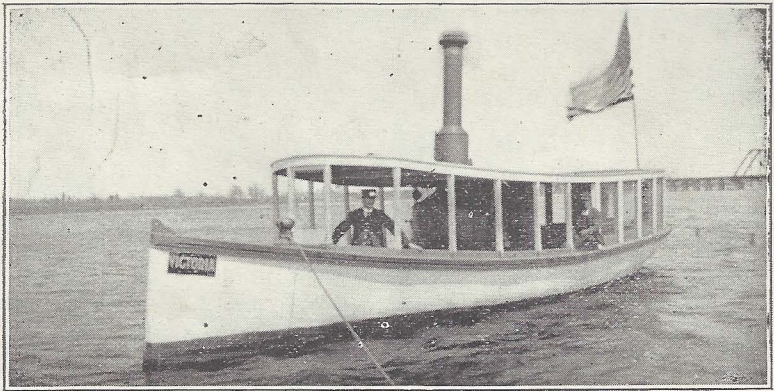
POKEGAMA LAKE FROM PARK HOTEL.



NORWAY POINT, CROSS LAKE.



A PINE COUNTY FARM.



STEAM LAUNCH, "VICTORIA."



PINE COUNTY FARM.