



FROM OUR FILES: Ice Harvesting



Before mechanical refrigeration was possible, people used iceboxes to keep their food cool. Nature provided ice each winter. Ice was cut from rivers and lakes and stored in specially built ice houses until its use in warmer months.

—Ice cutting has commenced in earnest, with the ice twenty inches thick. According to report at the present time there will be more ice cut and stored this year than ever before. Ice cutting is getting to be quite an industry in this place.

Pine County Pioneer
January 7, 1898

Two crews of men are at work cutting ice at present, and the amount put up this year will be greater than even before. The ice is about 20 inches thick, and as clear as crystal.

Pine County Pioneer
January 28, 1898

—Ice cutting has commenced at this point in earnest, and the ice is about 25 inches thick, and as clear as glass.

Pine County Pioneer
January 20, 1899



Photo courtesy of Jim Foster

Taken around 1900 this photo shows ice harvesting in process. We believe this photo was taken near the location of the first creamery in Pine City, at the far west end of 3rd Avenue SW.



FROM OUR FILES: Ice Harvesting



One of the biggest users of ice was the Buselmeier Brewery.



While this building was converted to a more traditional house in its later years, it was originally built by Theodore Buselmeier to hold ice.

—Theo. Buselmeier has a large ice house in course of construction at the brewery. His ice house has not been large enough for the past two seasons to hold the ice necessary in his business, but when he gets the new one filled, it will prove amply sufficient. Every winter Mr. Buselmeier puts up several thousand cakes of ice, which furnishes employment to a large crew of men for four or five weeks each winter.

Pine County Pioneer
November 12, 1897

—Theo. Buselmeier this week finished putting up his ice, he having stored 2,500 cakes. The ice is from 36 to 42 inches thick which makes it very hard to handle.

Pine County Pioneer
March 10, 1899

Cutting ice could be dangerous.

—Frank Putman met with quite a serious accident, Wednesday morning while putting up ice at the brewery. The traces being short he lengthened them out with heavy wire and while hauling an unusually heavy load up the slip the wires gave away and the eveners flying back struck Mr. Putman on the arms and legs and throwing him back full ten feet. Dr. Barnum was called and upon making an examination found that no bones were broken. Mr. Putman arrived here from Dickens, Iowa, a short time ago.

Pine County Pioneer
January 19, 1900



COMPILED BY:
Pine City Area History Association



FROM OUR FILES: Ice Harvesting



Ice was an important industry with a number of local men operating businesses that dealt in ice.

Tom Henderson

Tom Henderson, our local ice dealer, informs us that he has cut three crops off of one pond during this winter. This is a very good showing for our tropical? weather.

Pine County Pioneer
March 6, 1903

All those wishing extra orders of ice will confer a favor to Mr. Henderson, the ice-man, by ordering the same the night before or getting it in the morning when the ice wagon is out. Otherwise it necessitates much extra work, besides uncovering the ice which causes much waste and time. Telephone No. 13.

Pine County Pioneer
May 8, 1903

Thos. Henderson and assistants started harvesting ice Monday, and expect to put up about nine thousand cakes for to supply their customers.

Pine County Pioneer
January 19, 1906

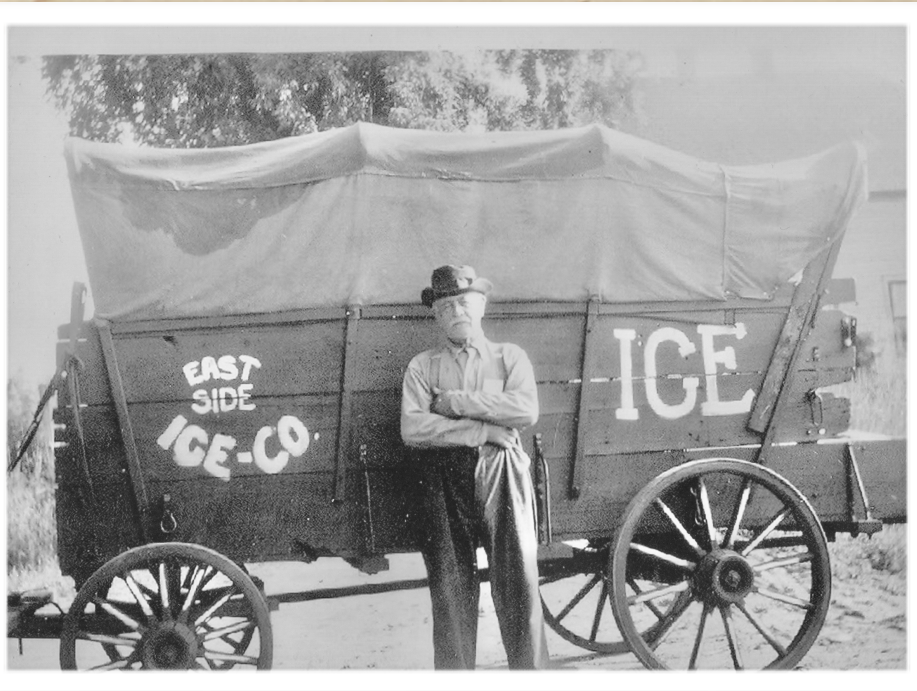


Photo courtesy of Jim Foster

Henry Moeding of East Side Ice Co.

J. M. Collins started Pine City Ice & Fuel but by the 1920s Louis Volenec was running the business.

J. M. Collins has bought out the coal business of the Pine City Milling and Electric Company, and hereafter will run a business under the name of the Pine City Fuel and Ice Company. We wish the new company success.

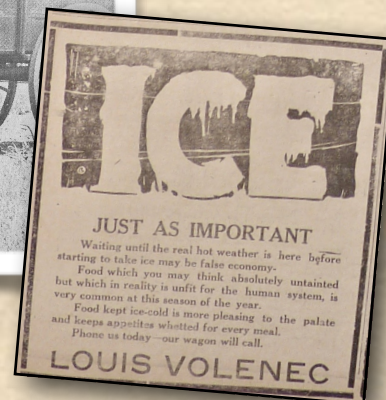
Pine County Pioneer
April 10, 1908

Another mark of the growing metropolitan appearance of our village is the new covered ice wagon of J. M. Collins, on the sides of which is inscribed "Pine City Ice and Fuel Co." Pine City is certainly coming to the front, despite the saying of some that she has seen her best days.

Pine County Pioneer
April 17, 1908



Louis Volenec, Pine City Ice & Fuel



Pine Poker
July 28, 1921



COMPILED BY:
Pine City Area History Association



FROM OUR FILES: Ice Harvesting



Ice cutting continued into the 1930s and even the 40s.

SNAKE RIVER FURNISHES ICE FOR HINCKLEY CO.

Hinckley ice patrons, next summer, will use ice taken from the Snake river at Pine City. Trucks have been busy the past week hauling ice to Hinckley and a supply has also been laid in at the County Poor Farm and by some of the merchants of Rock Creek. The ice is being taken from the river near the Volenec ice houses and that cut Tuesday was 17 inches thick. Mr. Volenec finished storing his ice last week and Mr. Moeding has also his supply laid in for next summer. The ice was 14 inches thick last week.

Pine Poker
January 22, 1931

I-C-E

Will start deliveries the last of this week.
SEE ME BEFORE ORDERING YOUR SUMMER'S ICE.
Telephone 30-F-4
George Soderbeck
PINE CITY, MINNESOTA

Pine Poker Pioneer
April 24, 1941

COAL and WOOD
Phone Your Order to No. 25
Pine City Fuel & Ice Co.
LOUIS VOLENEC, Prop.

Pine Poker
January 11, 1923

Burn the Best

Save money, heat your home with the Scientifically Designed fuel

BERWIND
Coal Briquets
BRIQUETS
"The Ideal Fuel for the Home"
Sold by Your Coal Dealer

EAST SIDE FUEL AND ICE CO.
Local Dealer
Supply on Hand at All Times
Phone 20-W

Pine Poker 1931

But as modern electric refrigerators came into use ice cutting was no longer needed.

A 3 YEAR GUARANTEE

*New Low Prices
New Refinements*

TODAY you pay less—not more—for a highly refined and improved General Electric Refrigerator. At new low prices you get new features and General Electric's written promise of no service expense for three full years.

Before you buy a new refrigerator be sure to check General Electric advantages. Let us demonstrate the three zones of cold, the accessible fast-freezing dial—the smooth-running Monitor Top mechanism, hermetically sealed, self-cooled, dirt and moisture proof. General Electric Refrigerators are just as inexpensive to buy as they are to own.

Down payments as low as \$10 (24 months to pay)

Join us in the General Electric Program, broadcast every Saturday evening, on a nation-wide N. B. C. network.

GENERAL ELECTRIC
ALL-STEEL REFRIGERATOR
Domestic, Apartment House and Commercial Refrigerators • Electric Water Coolers

EASTERN MINN. POWER CORP.
Pine City, Minnesota

Pine Poker
April 9, 1931

LOWEST COST REFRIGERATION
Depends on the mechanism, not on the price tag

THE Monitor Top mechanism of the General Electric Refrigerator is the most reliable, efficient and the cleanest refrigerating unit ever built! There is not a single moving part exposed to the dangers of dust, moisture or tampering fingers. The entire mechanism is hermetically sealed-in-steel inside the Monitor Top. It requires no attention... not even oiling.

\$10 Delivers a full-size General Electric or you can buy it for as little as 20c a day.

EASTERN MINNESOTA POWER CORP.
Pine City, Minn.

GENERAL ELECTRIC
ALL-STEEL REFRIGERATOR

Pine Poker June 16, 1932

BEFORE YOU BUY
A REFRIGERATOR IN 1940
Do 3 THINGS

*Look at the Size!
Look at the Name!
Look at the Price!*

IT'S A BIG 6
6 1/2 CUBIC FOOT

1940 KELVINATOR
\$114.75
Delivered in your kitchen with 5 Year Protection Plan

EASTERN MINNESOTA POWER CORP.

Pine Poker Pioneer
May 9, 1940



COMPILED BY:
Pine City Area History Association