



FROM OUR FILES: Catholic Rectory



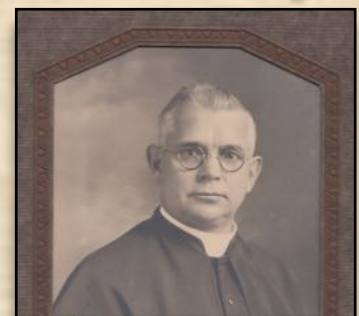
A 1911 view. The new church was nearly done.



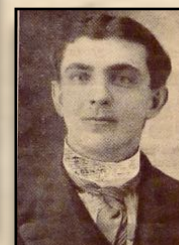
In the photo above the original Catholic Church rectory is pictured to the right of the newly built church.

Photo courtesy of Roger Plessel

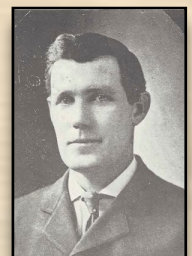
Just like any improvement program, you improve one thing and then something else looks in need. By 1912 the new brick Catholic church building was up and in use. By 1919 the original Catholic rectory was looking shabby in comparison. Father Leo and his trustees, R.J.Hawley & Frank Poferl came to the conclusion that the rectory needed replacing.



Father Leo Laskowski



Frank Poferl



R.J. Hawley

NEW RECTORY

On September 28, 1919, Father Leo and his trustees R. J. Hawley and Frank Poferl decided to build a new parish house. A building committee, consisting of Michael Hurley, William A. Sauser, Anthony Skluzacek, William Buckley, and William Weinberger, was selected. Later that fall Lots 3 and 4, north of the old rectory and adjacent to parish property, were purchased for \$450.³⁹

Early next year plans for the new rectory were drawn up by Sullivan Architects of Duluth. It was designed as a two-story frame building, with brick veneer on the outside, 32 feet wide and 43 feet long. As a multipurpose building, it had to include space for other than strictly residential facilities also. These included two parish offices in the front part of the house and a "winter" chapel in the basement.⁴⁰ On the first floor were also a living room, a dining room, and a kitchen. The second floor was laid out for five bedrooms of unequal sizes. There was an open porch the full width of the house on the street side.

"Our Parish Lives" 1972 by
Reverend Monsignor
George Gallik



COMPILED BY:
Pine City Area History Association



FROM OUR FILES: Catholic Rectory



A building committee was formed and land was acquired. Sullivan Architects of Duluth were hired to draw up plans. In addition to the residential items of kitchen, living room, dining room and bedrooms some specialty items like two offices and a "winter" chapel were also needed. There was a great deal of conflict over the project, in particular was concern over the cost.

To help save on costs much of the excavation and hauling of materials was done by parishioners. Parishioners who helped with this were:

Excavation:

Fred Clary, 3 days;

John Stoffel, 1 day;

Joseph Felten, 2 days

Picked stone for the foundation:

John Vojta, 2 days;

Frank Osman, Sr., 1 day

Joseph Pacha, 1 day;

Joseph Hejny Sr., 2 days;

Nick Felten.

Hauling Materials:

Andrew Gallik, Sr.; 8 loads of tile

Jake Rosus, 1 day

John Wars boys, 4 loads

Nick Felten, 1 day

Charles Webber, with truck

Andrew Gallik, Jr.

George Gallik, hauling brick, 1 day

Valentine Miner, with truck, 1/2 day;

Henry Felten, with team, 1/2 day

Joseph Hejny, 2 days

Peter Wossek, 1 day

Nick Felten, 2 days

three Stoffel boys, 1 day.

The original parish house was sold for \$567 and was relocated to 845 6th Street S where, over the years it served as both a home and a shop. It was torn down sometime between 2013 & 2019.



Photo courtesy of Jim Foster



1989 ad for Thee Ol' House



COMPILED BY:

Pine City Area History Association



FROM OUR FILES: Catholic Rectory



The new Catholic parish house was completed about 1921.

Two views of the Catholic parish house.

Both photos are from approximately 1930



Catholic Parish Out of Debt

The picture below show the Church of Immaculate Conception shortly before it was completed in 1911, with the old St. Mary's Church on the left and the old parish house on the right. The second picture is of the church and the new parish house as they appear today. The insert is Father Leo, whose record of achievement during the past nineteen years has resulted in the construction of the church building and parish house and starting his twentieth year with parish free of debt and a nice balance in the bank.

Through careful management and generous parishioners the church had everything paid for and was out of debt by 1928.

Pine Poker
January 19, 1928



COMPILED BY:

Pine City Area History Association



FROM OUR FILES: Catholic Rectory



Flash ahead 100 years and history repeats itself. In 2008 the Pine City Catholic church completed an ambitious building project. Building an addition that joined the church and the school, the addition contained offices, meeting rooms and an elevator, making the church accessible.



In 2019 having determined that the current rectory was in need of replacement, a new rectory was built in the northwest corner of block 3 of the princes addition, the block that contains the church,

In June of 2021, a hundred years after being built the 1921 Catholic rectory was torn down.



The new rectory at 500 9th Street SW.



COMPILED BY:

Pine City Area History Association