

THE JONAS GRAY FAMILY



PUBLISHED BY:
Pine City Area History Association

THE JONAS GRAY FAMILY



This glimpse into the Jonas Gray family would have been impossible without the photo albums kept by Earl Gray. Spanning the years 1916 - 1923 the albums documented Earl's life and the lives of those around him.



EARL GRAY
PHOTO ALBUM 1916 - 1920



EARL GRAY
PHOTO ALBUM 1920 - 1923



Compiled in 2019 by Judy Scholin, as a local history project in cooperation with

Pine City Area History Association

Jonas Gray was born in Bakersfield, Vermont, July 10, 1850. He came to Pine City before the railroad came through in 1870. He married Florence Wilcox on May 19, 1884. They had 5 sons.



**JONAS & FLORENCE GRAY
1884**

Jonas M. Gray

Florence A. Wilcox Gray

Darwin Cutler Gray - 1885

Royal Jonas Gray - 1888

John Howard Gray - 1894

Earl Eugene Gray - 1896

Lorenzo A. Gray - 1900

The family lived in Taylors Falls until 1893, when they moved to Pine City.



**JONAS, FLORENCE & DARWIN GRAY
1886**



**DARWIN & ROYAL GRAY
1888 & 1890**

THE WOMAN ON THE RIGHT IN THE 1886 PHOTO (ON THE LEFT) IS BELIEVED TO BE FLORENCE'S MOTHER, SARAH WILCOX. SHE ALSO APPEARS IN A PHOTOGRAPH ON PAGE 6.



FLORENCE, DARWIN & ROYAL GRAY
1893

In Pine City, the family lived for a time near Florence's family, the J.D. Wilcox family at the south end of Cross Lake. Three more sons joined the Jonas Gray family:

John Howard - 1894

Earl Eugene - 1896

Lorenzo A. - 1900

They moved briefly to Beroun and then back to Pine City. In 1906, they had a chimney fire.

Jonas Gray moved his family from Beroun on Monday and is now located at the Wilcox farm where the family lived before moving to Beroun last fall.

PINE COUNTY PIONEER
APRIL 3, 1903

A Chimney Fire.
Thursday morning an alarm of fire was turned in, and upon investigation it was found that the roof around the chimney on the Jonas Gray residence, on the south end of Cross lake, was on fire. The fire ladders turned out but owing to the deep snow and the distance the engine and hose carts were not taken out. When the citizens reached the scene J. D. Wilcox, Jr., and several of the neighbors had the fire about out. The damage to the house is but slight.

PINE COUNTY PIONEER
FEBRUARY 9, 1906

The 1910 census lists Jonas Gray's occupation as a rural mail carrier.

Person	Age	Sex	Color	Married	Single	Widowed	Divorced	Occupation	Home	Rural
Jonas Gray	41	M	W					Rural Mail Carrier	Own	Yes
Edna Gray	38	F	W					Homemaker	Own	Yes
John Gray	14	M	W					School	Own	Yes
William Gray	12	M	W					School	Own	Yes
Charles Gray	10	M	W					School	Own	Yes
Elizabeth Gray	8	F	W					School	Own	Yes
Anna Gray	6	F	W					School	Own	Yes

In 1919, the family bought a home just south of the Methodist Church at 530 8th St. SW.

J. M. Gray, who recently sold his place to Ed Hakes of Surrise, purchased the G. C. Ives home, opposite the Methodist church, last Tuesday, and will take possession next Monday. When Mr. Gray bought the Ives place it started a small sized real estate boom in

PINE POKER
NOVEMBER 13, 1919



1921

Jonas passed away in 1920.

Pioneer Passes Away

Jonas Gray passed away at his home in Pine City yesterday—Wednesday—at 6 p.m. death being due to old age and the result of a fifth paralytic stroke, after a weeks confinement to his bed. The first stroke was suffered about 8 years ago. This is the first break in the family for 40 years, when a brother of Mrs. Gray was drowned.

The deceased was born in Bakersfield, Vermont, July 10, 1850, coming to Pine City when a young man before the railroad was through here. He married Miss Florence Al Wilcox, daughter of John D. Wilcox at Pine City, May 19, 1884. 5 children were born—Darwin C. of Duluth, Royal J. of Virginia, John H. of Pine City, Earl E. of Fairmont, Lorenzo A. of Minneapolis—all of whom are living and were home when the end came. After the marriage they moved to Taylors Falls and lived there until 1893 when they returned to Pine City and have made their home here since that time.

Funeral services will be held tomorrow—Friday—afternoon at 2:30 o'clock from the M. E. church and interment made in the local cemetery. The pall bearers will be: George Sherwood, Frank Cort, Robert Greig, S. H. Wells, G. C. Ives and Charlitz Stephan.

The deceased was one of the few pioneers left, had seen this community grow from nothing to its present size, and was known, liked and respected by all, who extend their sympathy to the bereaved family.

PINE POKER
NOVEMBER 18, 1920

John D. Wilcox

Sarah A. Clover Wilcox

Florence Wilcox Gray was born November 10, 1862, in Sunrise in Chisago, County. She was the second child born to John D. and Sarah A. Wilcox. The Wilcox family moved to the Pine City area about 1870, living first in the Chengwatana area and later settling near the south end of Cross Lake.

Webster Horace - 1861

Florence - 1862

Eugene A. - 1867

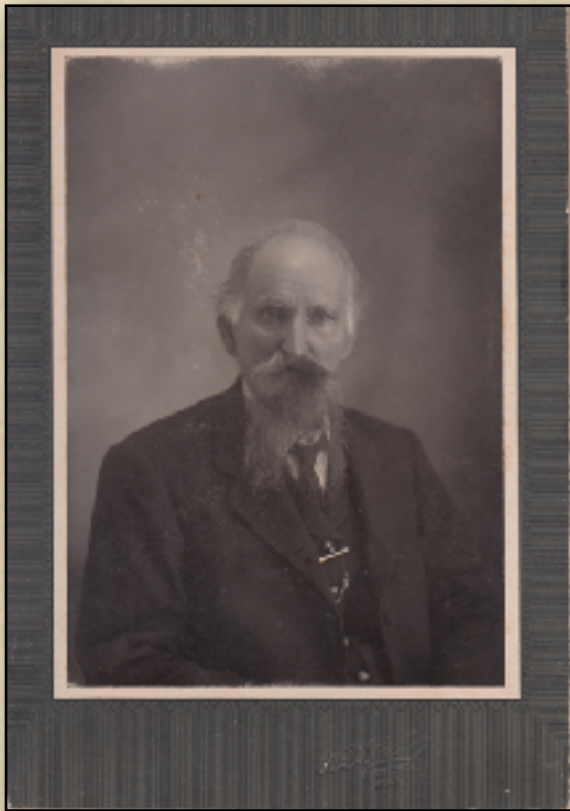
John D. - 1869

Grace - 1871

Sarah - 1877

Leland - 1884

Louise - 1884



JOHN D. WILCOX
ABOUT 1905



FLORENCE WILCOX GRAY IS ON THE RIGHT IN THIS PHOTO FROM ABOUT 1905. IT IS UNCLER WHO THE WOMAN ON THE LEFT IS. FLORENCE'S MOTHER, SARAH CLOVER WILCOX, DIED IN DECEMBER 1903, FOUR MONTHS BEFORE THE PHOTOGRAPHER, SEELEY, CAME TO TOWN.

Florence was active in the community. She is pictured here in this 1910 photo of Methodist Church women.



1910 METHODIST WOMEN - FLORENCE IS IN THE BACK ROW, FARTHEST LEFT



FLORENCE GRAY & SISTER LOUISE 1921

On Tuesday afternoon of this week Mrs. Jonas Gray gave a quilting party. Eight of her neighbors and friends were present and spent a very pleasant afternoon.

PINE COUNTY PIONEER
SEPTEMBER 11, 1903



FLORENCE GRAY & 2 SONS
1922

Florence was also active in the Ladies of the G.A.R. The G.A.R. stood for Grand Army of the Republic, which was a veterans organization of men who had served in a union service branch during the Civil War.



THIS 1918 PHOTO IS BELIEVED TO BE THE ONE MENTIONED IN THE PINE POKER ARTICLE BELOW. FLORENCE IS 3RD FROM THE LEFT IN THE FRONT ROW.

PINE POKER
JUNE 13, 1918

The farewell party which was to have been tendered Mrs. Laing at the Hodge home, Tuesday afternoon, by the Ladies of the G. A. R. was postponed until yesterday owing to the illness of Mrs. Hodge, when it was held at the Laing home instead. The afternoon was spent socially, following a short session of the society, lunch being served. Mrs. Laing was presented with a beautiful past president's jewel by the lodge. During the afternoon a picture of those present—about 25—was taken on the lawn.

The ladies of the G. A. R. Circle will meet at the home of Mrs. Jonas Gray, Tuesday, Sept. 10. All members are requested to be present.

PINE POKER
SEPTEMBER 12, 1918

LAST RITES FOR MRS. FLORENCE GRAY

Mrs. Florence Gray passed away at her home here last Friday, December 30th, after a lingering illness, death resulting from diabetes. Mrs. Gray had been in poor health for some years and had been confined to bed practically all of the past year.

Funeral services were conducted by Rev. Clark from the Methodist church last Monday morning, January 3rd, and her remains were laid to rest beside those of her husband in Birchwood cemetery. The pall bearers were W. P. Gottry, Herman Borchers, Nick Perkins, J. D. Boyle, R. P. Allen, and Emil Hoefler.

Mrs. Gray was born in Sunrise in Chisago county, Nov. 10, 1862, the daughter of Mr. and Mrs. John Wilcox. She came to Pine City with her parents about 1870 and was united in marriage to Jonas Gray at Pine City, May 19, 1884. After the marriage, they moved to Taylors Falls and lived there until 1893 when they returned to Pine City. Her husband passed away here Nov. 17, 1920. She is survived by five sons, Darwin C. of Brainard, Royal J. of California, John H. of Pine City, Earl of Fairmont and Lorenzo of Davenport, Ia. Darwin and Earl were here for the funeral, the other boys from out of town being unable to come and John is ill in the N. P. hospital at St. Paul. She is also survived by 2 brothers, John D. and Eugene Wilcox of Pine City, and 3 sisters, Mrs. Gene Barnum of California, Mrs. Albert Lloyd and Mrs. Rob. Stacey of Pine City.

Mrs. Gray was a member of the local Methodist church, the Emily J. Stone Circle, ladies of the G. A. R., and the Pine City Chapter of the Eastern Star. She was an active worker in all these organizations up to the time of her illness. She suffered intense pain during the past year.

PINE POKER
JANUARY 5, 1928

Darwin Cutler Gray was the first child born to Jonas and Florence Wilcox Gray. Darwin, or Darby as he was sometimes called, was born August 15, 1885, in Taylors Falls. In 1893, the family moved to Pine City. After leaving school, he worked as a telegraph operator for the railroad.

D. C. Gray, our popular station agent, who has been confined to the house with a slight attack of small-pox is, we are pleased to say, able to be at his work again, the quarantine being raised Monday.

PINE COUNTY PIONEER
DECEMBER 20, 1907

Darwin Gray, who has been employed as operator at the depot for the last couple of years, has been changed to Wright. Miss Lebole takes his place at this station. We are sorry to lose Darwin, but wish him success wherever he goes.

PINE COUNTY PIONEER
DECEMBER 3, 1909

Darwin Gray spent the time between trains Tuesday visiting with relatives and friends. He has gone to Stacy, where he will have charge of N. P. station for a short time. Darwin's many friends in this place were pleased to see him.

PINE COUNTY PIONEER
NOVEMBER 18, 1910

—Darwin Gray, who has been at Duluth for the past month in the interest of the N. P. people, spent Sunday with relatives and friends in this place. He departed that evening for Hugo, where he will take charge of the station.

PINE COUNTY PIONEER
JULY 29, 1910

—Darwin Gray has been sent to Atkin to take the station there for thirty days. He is employed by the N. P. Railway Co.

PINE COUNTY PIONEER
SEPTEMBER 23, 1910

—Darwin Gray, who is employed by the N. P. rail road company, departed for Rush City Monday to check up that station.

PINE COUNTY PIONEER
JANUARY 27, 1911

Mrs. Jonas Gray and son, Darwin departed the first of the week to visit friends in Missouri and other places. They will be gone about a month. The Pioneer wishes them a pleasant vacation.

PINE COUNTY PIONEER
JULY 23, 1909

GONE TO HIS OLD HOME.

Jonas Gray and son, Darwin departed on Thursday's limited for Franklin Vermont. This is Mr. Gray's old home it being thirty years since he was home. He goes to visit his sisters. Darwin, who is a telegraph operator on the Northern Pacific railroad and got a two weeks lay off with full pay and a pass to and from Franklin accompanied his father. They expect to be absent for about two weeks.

PINE COUNTY PIONEER
SEPTEMBER 2, 1910

DARWIN & FLORENCE GRAY
1922

Darwin was clearly a valued employee. He also must have been a good person to have as a travel companion.

In 1909, he traveled to Missouri with his mother. A year later he traveled to Vermont with his father.



In 1923, Darwin married Neata Wise Gould. They had no children.



NEATA & DARWIN
GRAY 1922

Darwin belonged to a number of masonic lodges and organizations.



PINE POKER
NOVEMBER 13, 1919



DARWIN GRAY 1922

NEW MASONIC HEAD

D. C. GRAY
D. C. "Darby" Gray, former Pine Cityite and brother of John Gray was recently installed as Worshipful Master of Aurora Lodge No. 11, A. F. & A. M. of Brainerd.

PINE COUNTY PIONEER
JANUARY 13, 1938

D. C. Gray, traveling freight agent on the Northern Pacific railway, spent Sunday in town. He was on his way to Quikta after attending the shrine celebration in St. Paul last week, and stopped off to visit his parents, Mr. and Mrs. J. C. Gray.

**Darwin C. Gray
Died at Brainerd**

Darwin C. Gray, 57, prominent Brainerd realtor, lodge and club member, and chairman of the Crow Wing county Republican committee, died Sunday noon in St. Joseph's hospital, Brainerd. Death was due to a blood clot on the heart. Mr. Gray, who was a brother of John Gray of Pine City had undergone an operation Oct. 7th, death coming suddenly and at a time when he was believed to be recovering from his illness. Mr. and Mrs. John Gray had been to Brainerd to see him, returning here Sunday morning feeling that he was well on the road to recovery.

Funeral services were held from St. Paul's Episcopal church, Brainerd, Tuesday at 10 a. m. The remains were sent to Sunset Memorial Park for cremation.

Mr. Gray was born in Taylors Falls, Aug. 11, 1885, a son of the late Jonas M. and Florence Wilcox Gray. When a small child the family moved to Pine City, where he attended and graduated from the local high school. After leaving school he worked for many years as a telegraph operator for the Northern Pacific railroad. He also served as a relief agent and traveling auditor for the Northern Pacific, during which time he made his home in Duluth. After moving to Brainerd, he became a member of the Gould and Gray realty firm.

He was a member of the Masonic and I.O.O.F. lodges, Aad Temple of the Shrine at Duluth; Brainerd Lions Club; treasurer of the Brainerd Red Cross Chapter; treasurer of the Brainerd Defense Council and past president of the Brainerd Chamber of Commerce.

Surviving are his widow, Mrs. Neata Gray; a brother John H. Gray of Pine City; two nieces Betty Gray of Pine City and Virginia of Minneapolis and a nephew, Audrey Gray of Colorado.

Mr. and Mrs. John Gray, Miss Betty Gray, Mr. and Mrs. Robert Wilcox, John D. Wilcox, Mr. and Mrs. Ernest Hinz, Mr. and Mrs. Wm. Voss of Pine City and Mrs. Carl Wallace of Cromwell attended the funeral services.

PINE POKER PIONEER
OCTOBER 22, 1942



ROYAL GRAY ABOUT 1899

Jonas and Florence Gray's second son was Royal Jonas Gray, born January 25, 1888, in Taylors Falls. Royal suffered from Pott's Disease, which is a form of tuberculosis that affects the spine. In 1897, his parents went to St. Paul, to seek treatment for him. Royal was the first patient at Gillette Children's Hospital.

TO
LEARN
MORE
OF THE
STORY
SCAN
THIS QR
CODE.



—We are pleased to state that Jonas Gray's little son Royal, who has been a cripple for so many years, is now improving finely in St. Paul, where he is being treated. The little fellow is as happy as can be, and will be home about January 1st, as well as can be.

PINE COUNTY PIONEER
DECEMBER 3, 1897

However, Royal's disability apparently did not slow him down much.

Master Royal Gray visited his uncle and brother at Beroun Sunday. He drove up and back with his dog team.

PINE COUNTY PIONEER
JANUARY 27, 1905

In 1905, Royal traveled to Beroun by dog team.

In the running races at the Chicago County Fair last week Pine City horses took all the money. Fred Wiley's "Kentucky Whip" mare, ridden by Royal Gray, took first money, and James Carroll's pony, "Prince, ridden by his brother Ed, took the second money both days of the fair.

PINE COUNTY PIONEER
SEPTEMBER 18, 1908

In 1908, he was a jockey in a horse race.

Royal Gray and Frank Bartos enjoying camp life at Mission Point.

PINE COUNTY PIONEER
AUGUST 6, 1909

In 1909, he was camping along Lake Pokegama.

In 1910, Royal took on a substitute rural mail job.

Royal Gray carried the mail Tuesday, owing to the death of Mr. W. C. Stephen's sister's baby, whos funeral occured Tuesday.

PINE COUNTY PIONEER
FEBRUARY 4, 1910



ROYAL GRAY 1912



ROYAL & FRIENDS ABOUT 1916 JONAS GRAY FAMILY - PAGE 12

—The town has been real quiet and peaceful for the last few days Brownie Gray's auto is broke.

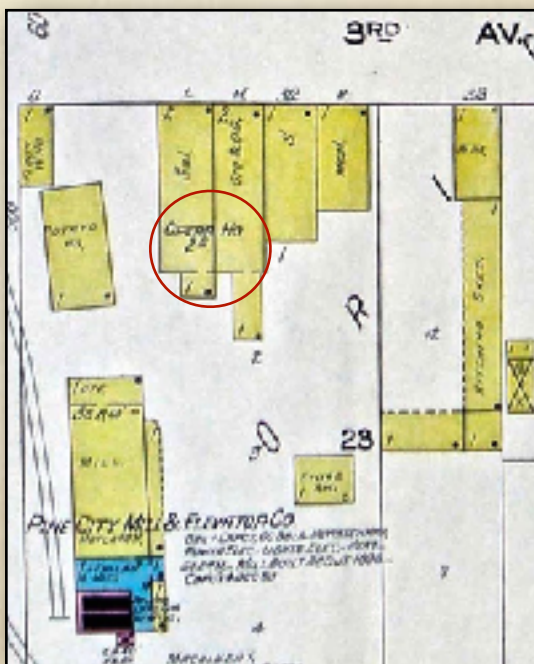
PINE COUNTY PIONEER
MAY 15, 1913

Royal, nicknamed Brownie, seems to have had a lot of friends.

Royal Gray and Ed. Sherwood returned from a sight seeing trip to Hamline Wednesday.

PINE COUNTY PIONEER
SEPTEMBER 7, 1906

One of Royal's friends was George Stekl, son of Charles Stekl. The Stekl family ran Stekl Hall, the venue for the town's entertainment. Stekl Hall was located on 3rd Avenue, on the east side of the train tracks. It was on the 2nd floor, over a saloon & a general store.



GEORGE STEKL AND BROWNIE

EVENTS AT STEKL HALL

Concert & Ball
 Stekl's Hall, Pine City,
 February 27, 1911

This Grand Ball will be given by Prof. Rhim's Central Orchestra of St. Paul, Minnesota. American, Bohemian and Scandinavian dances. Everybody is invited to attend this Ball.

Admission, Concert, - - - \$.25
 Concert and Ball, Couple - 1.00
 Commencing 8:00 p. m. Sharp

1911

Ash Davis, the cartoonist entertainer, gave one of his first-class entertainments at Stekl's hall last Thursday evening. Mr. Davis was the third entertainer to come here under the auspices of the Pythian Sisters, and each entertainment has been better than the preceding one. Mr. Davis is a gentleman in every sense of the word, and a first-class artist.

1908

Colby and Cutter have gotten out hand bills announcing a moving picture and illustrated song show which commenced last night in Stekl's hall. The young gentlemen hail from Anoka, and intend to remain all winter, providing they can make it pay. The show will be held every evening in the week, admission 10 cents, with a matinee every Saturday afternoon for children, admission only 5 cents.

1909

The Virginia daily paper says that Brownie Gray has his taxi decorated in spring colors and reports business fine.

PINE POKER
 APRIL 11, 1918

On September 12, 1916, Royal married Mildred Russell of Virginia, Minnesota. Royal worked as a taxi driver while living in Virginia for about 8 years.

Royal and Mildred had three children.

Audrey - September 20, 1916

Bette Florence - November 18, 1918

Virginia Lillian - March 18, 1922



ROYAL & MILDRED GRAY
DATE UNKNOWN



AUDREY GRAY
1922

"A TERROR TO SNAKES"



"SHAKING THE TOUGH
OUT OF HIM."

UNIDENTIFIED, AUDREY
GRAY, ROYAL GRAY



VIRGINIA GRAY
1922



BETTE GRAY
1922



AUDREY



ROYAL "BROWNIE" GRAY
1922

By 1930, Royal and Mildred were divorced. Royal was living in Pine City and working at the power company. Royal and Audrey were lodgers with Jerry and Josephine Collins on 3rd Ave. Betty and Virginia were also in Pine City, living with Edward and Evelyn Hakes.



ROYAL GRAY



VARIOUS VIEWS OF THE DAM, OPERATED BY THE EASTERN MINNESOTA POWER CORPORATION



The River



The Dam



Top of Dam



The Forebay



The Turbine



BROWNIE'S CHICKEN SHACK

In March of 1930, Royal ("Brownie") made plans to open a restaurant.

**ROYAL J. GRAY
DIED LAST SATURDAY**

Royal Jonas Gray passed away at the Grantsburg hospital last Saturday, May 12th, at 1:45 a.m., death resulting from acute nephritis. He became ill about a week before his death, suffering from heart trouble, and his condition grew steadily worse and he was taken to the hospital late Friday night.

Funeral services were conducted by Rev. D. W. Thompson from the Presbyterian church, Monday afternoon at 2 o'clock and the remains were laid to rest in New Birchwood cemetery. The pallbearers were Clark Pennington, Webster Hodge, Dave McLaughlin, Theodore Buselmeier, Herman Kowalke and James Wandel.

R. J. Gray was born in Laylors Falls, January 25, 1883 and was 46 years, 3 months and 17 days of age. He came to Pine City with his parents in 1893 and this has been his home since with the exception of 8 years he was in business in Virginia, Minn. On September 12, 1916, he was united in marriage to Mildred Russell of Virginia. Surviving are his wife, one son, Audrey, and two daughters, Betty F., and Virginia L., also two brothers, Darwin C. of Brainerd and John H. Gray of Pine City.

"Brownie" Gray, as he was known to everyone in this community, operated Brownie's Chicken Shack here the past three years. He filed last week as a candidate for county register of deeds but his name will not appear on the ballot on account of his death. This will eliminate a contest in the primaries for this office as there are only two other candidates.

Those from out of town here for the funeral were Darwin Gray of Brainerd; Mr. and Mrs. Ray Russell of Proctor and Mrs. Bert Wheeler of St. Paul.

Card of Thanks

We wish to express our sincere thanks to our kind friends and neighbors for their sympathy and assistance during our bereavement and for the beautiful floral offerings.

The Grays

**PINE POKER PIONEER
MAY 17, 1934**

**BROWNIE GRAY TO
OPEN CHICKEN SHACK**

"Brownie" Gray has leased the lots owned by Adam Biedermann on the highway at the south end of the bridge, opposite the Pine City Bottling Works, and will open a Chicken Shack. He has purchased a 30 passenger bus body which he will use for his establishment. Bus bodies and street car bodies are used for this purpose in California and other places. He will also put in a filling station.

The restaurant did well. Royal even made plans to enlarge it the following year.

**PINE POKER
MARCH 13, 1930**

**BROWNIE GRAY WILL
ENLARGE CHICKEN SHACK**

The Brownie Gray Chicken Shack will be enlarged to over twice its present size by the use of a street car which will replace the bus body used at present. Mr. Gray recently purchased a used street car body in Duluth. It was brought down a few days ago and is being repainted and the interior will be remodeled. The bus body will be moved a little north and will be used as an oil station.

**PINE POKER
APRIL 16, 1931**

Royal continued to run the restaurant until his death in 1934.

**BROWNIE'S CHICKEN
SHACK OPENS SATURDAY**

Brownie Gray will open his chicken shack for business Saturday. The shack, which is located on the highway at the south end of the bridge, has been closed during the winter.

**PINE POKER
FEBRUARY 26, 1931**



**A TOKEN FOR
BROWNIES**

**PINE POKER PIONEER
MAY 17, 1934**

John Howard Gray, the third child born to Jonas and Florence Gray, was born February 15, 1894, in Pine City. John joined the 3rd division of the Minnesota Naval Militia and served as a seaman 2nd class during World War I.



THE MINNESOTA NAVAL MILITIA 3RD DIVISION



John's name can be seen on the memorial to honor those who served in the Third Division Minnesota Naval Militia. This monument stands at the Pine City Public Library.

After World War I, John went to work for the Northern Pacific Railroad.

John Gray returned, last Saturday, from a 2-weeks stay at Barnum where he served in a railway office position, and is again at his old job here.

John Gray takes the day job at the depot, left vacant by Arthur Dickinson's leaving for training camp today, and Paul Benda takes John's old place while Dave McLaughlin takes the work in the freight house.

PINE POKER
JULY 25, 1918

John had a distinguishing feature that made him unique. He had six fingers on each hand and six toes on each foot. Herman Borchers, owner of Borchers's Shoes and a neighbor, modified John's leather shoes for him.

PINE POKER
JUNE 27, 1918



JOHN GRAY 1922
THE WHITE BUILDING BEHIND JOHN IS THE ORIGINAL METHODIST CHURCH. IT WAS REPLACED WITH A BRICK BUILDING IN 1927.



JOHN GRAY STANDING IN FRONT OF HIS HOME, FACING IT. THE CATHOLIC PARISH HOUSE IS BEHIND HIM. BORCHER'S HOUSE IS JUST OFF THE PICTURE ON THE RIGHT.

In 1942, John married Gladys Olson and acquired a ready made family, 11-year-old Orville & 4-year-old Mavis. Three grown children, Earle Olson, Russell Olson and Elaine Larson had already left home when John and Gladys married.



JOHN & GLADYS
1942



ORVILLE & MAVIS
1942



JOHN, GLADYS & MAVIS
1942

Gray-Olson Wed Saturday Evening

John H. Gray and Mrs. Gladys Olson of this city were quietly married last Saturday evening, Oct. 3rd at the home of Mr. and Mrs. Robert Wilcox, with the ceremony performed by Judge Wilcox.

Attending the bridal pair were Miss Betty Gray, niece of the groom, of this city and D. C. Gray of Brainerd, brother of the groom.

The newlyweds left that evening for the twin cities and returned to this city Monday, leaving later for Brainerd where they will spend a short honeymoon.

John is a native of this community, a graduate of Pine City high school and telegraph operator at the N. P. station here ever since leaving school. His bride has been a resident of this city for some years.

Mr. and Mrs. Gray will make their home in the Gray residence south of the Methodist church.

Pine City friends extend heartiest best wishes.



MAVIS OLSON HOTCHKISS IN FRONT OF THE GRAY FAMILY HOME. THE METHODIST CHURCH, BUILT IN 1927, IS IN THE BACKGROUND.

PINE POKER-PIONEER
OCTOBER 3, 1942

John lived in the family home south of the Methodist Church until his retirement in 1959, when he and Gladys moved to California.



JOHN WALKING MAVIS DOWN THE AISLE
AT THE METHODIST CHURCH 1957

After 44 years as a telegrapher, John retired August 14, 1959.



GLADYS & JOHN
1955



THE GRAY FAMILY HOME AT 530 8TH ST. SW.

Last Rites Held For John H. Gray

THE PINE POKER-PIONEER
THURSDAY, OCTOBER 12, 1967

North Highlands, Calif., until his passing.

Private funeral services for John H. Gray of North Highlands, California, and formerly of Pine City, were conducted from the Ingold chapel at Fontana, Calif., on September 30 with burial in Green Acres Memorial Gardens in Bloomington, Calif.

Mr. Gray was born to Florence and Jonas Gray on February 18, 1894. He was united in marriage to Gladys Olson on October 9, 1942 and they made their home in Pine City where he was employed by the Northern Pacific railroad until his retirement in 1959. At that time they moved to Fontana, California. After his wife's passing in 1961, he resided with his step-daughter, Mavis Hotchkiss and family at

He passed away at her home suddenly on September 23, at the age of 73 years. Mr. Gray was a past master of the Mt. Olivet lodge in Pine City.

He is survived by his step-children, Russell Olson of Palos Verdes, Calif.; Elaine Larson of Fontana, Calif.; Orville Olson of Littlefork, Minn.; and Mavis Hotchkiss of North Highlands, Calif.; and two nieces, Mrs. Bette Peterson of Wyoming, Minn.; and Mrs. Virginia Zaworski of Minneapolis.

John died in 1967. He was last of the five Gray sons still living.

Mavis Olson was 4 when her mother, Gladys married John Gray. She has wonderful memories growing up in the Gray family home.



“Thinking about the Gray family has brought back so many memories of my growing up in their "old" home. We were a very happy family. Johnnie did not want my Mother to have to work cleaning offices after they were married so she was able to be active in Ladies Auxiliaries. She became a Gold Star Mother when my oldest brother Earle was killed in Hawaii in 1945.

ORVILLE AGE 9 &
MAVIS AGE 2
1942



“When I was in first grade, I broke my leg and was in the Northern Pacific hospital in the Cities. I had a cast from my chest to my ankles and they had a wooden bar across my chest to carry me, but I just remember being in bed for months. When the cast came off, they bought me a tricycle and the doctor was amazed at my recovery.”



“We had no TV but listened to the radio programs. Johnnie listened to all the Lakers games and kept score while also doing crosswords.”



“We always had a jigsaw puzzle going on a table. We played a lot of card games and Mother and Johnnie had several card clubs.”

“Johnnie & Mother never had a car, they walked everywhere and in the winter Johnnie wore a buffalo coat. When storms hit and the highway was closed, we had strangers staying at our house who sometimes became friends”.

MAVIS AND A FRIEND,
JEAN BJORKLUND, IN
THE BACKYARD OF THE
GRAY HOME.

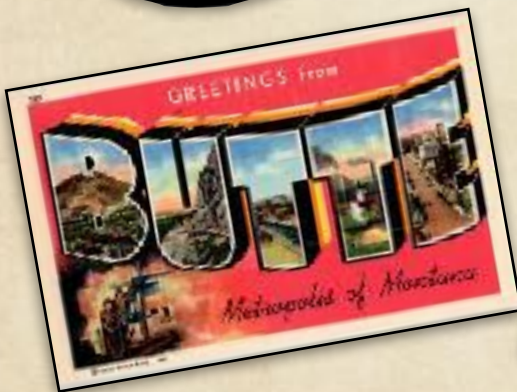


“Orville worked at the bowling alley setting pins and one day he brought me a tiny kitten that lived a long life.”

“Orville and Johnnie would go to the pool hall where Johnnie was very good.”



“Because Johnnie worked for the railroad, we had a family pass so Mother and I took several trips over the years.”



Johnnie was a wonderful person. I am so thankful he was my "dad".

Jonas and Florence Gray's fourth son, Earl Eugene Gray, was born July 11, 1896, in Pine City. Much of the information on the Gray family came from two photo albums that belonged to Earl. After graduating from high school in Pine City, Earl attended the Bliss Electrical School in Washington D.C.



MAIN BUILDING, BLISS ELECTRICAL SCHOOL, YACOWA PARK WASHINGTON, D. C.

Earl Gray left last Thursday for Washington, D. C., where he will attend the Bliss electrical school. Earl has been employed in the Eastern Minnesota power house at Chengwatana for two years and his studies will carry him along the same line. He is a bright young man with a natural bent toward mechanics and his hosts of friends at home are confident that he will be heard of in his chosen work.

**PINE POKER
SEPTEMBER 28, 1916**



While he was in Washington D.C., Earl attended the Inaugural Parade for President Wilson.

In 1917, Earl was hired by the Bell Telephone company of Pittsburg.

In February of 1918, Earl enlisted in the aviation corps.



Word received from Earl Gray by his parents, states that he is at Columbus, Ohio, and had his examination but will have to undergo a slight operation before he will be accepted.

PINE POKER
FEBRUARY 14, 1918

He was assigned to Mather Field in Sacramento, California.

Earl Gray has just gone to Sacramento, Cal., from a 2-months training course at the aviation field at Houston, Tex., and is serving at the Sacramento field as an instructor in aerial gunning.

PINE POKER
JUNE 27, 1918



MATHER FIELD



THE GUNNERY DEPARTMENT



HOSPITAL SHIP

Earl was discharged in February 1919, and was in Pine City that summer. He was able to participate in the Welcome Home event held on July 4th to honor all Pine County citizens who had served during the war.

PINE CITY
JULY 4, 1919

EARL IS ON THE
KNIGHTS OF
COLUMBUS FLOAT,
RIGHT UNDER THE
R IN
BRECKENRIDGE'S



Earl Gray motor-cycled to Cny-
ona, Tuesday, for a few days visit
with Spencer Daniels, who is em-
ployed in the bank at that place.

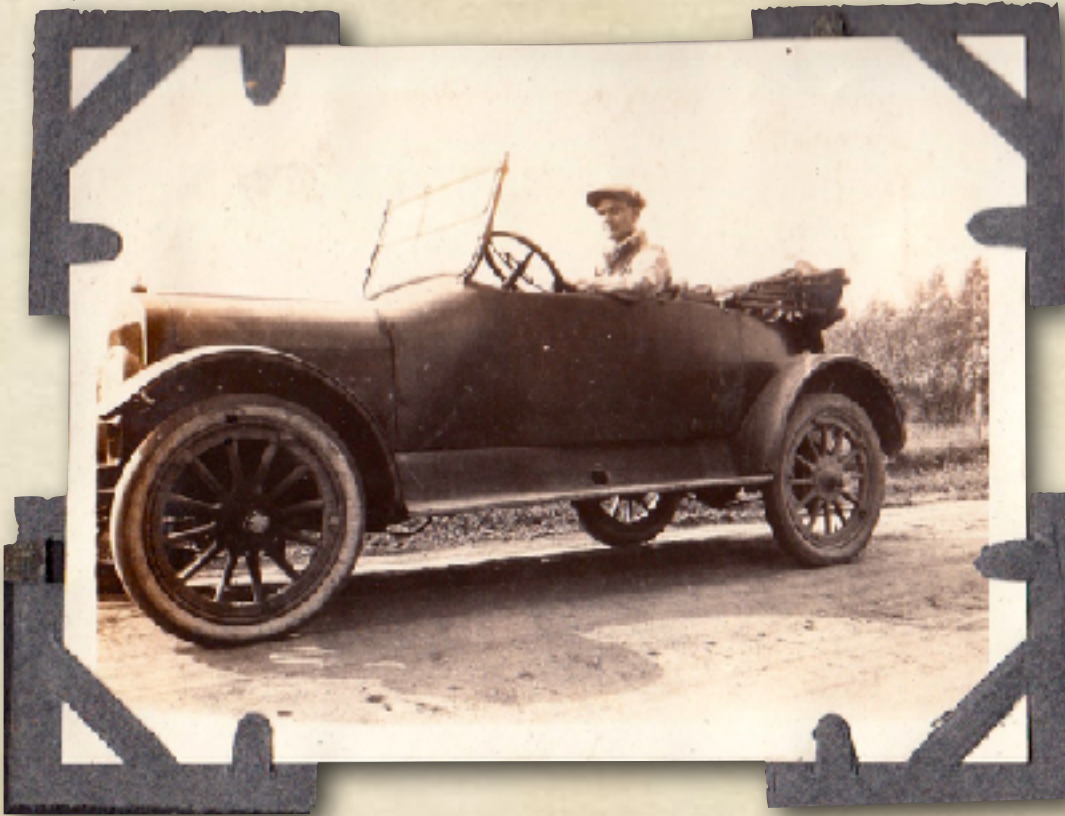
PINE POKER
AUGUST 26, 1915



Judging by all the
vehicle photos it would
appear that Earl was
fond of anything that
would go.

NOTE THE FAIRGROUNDS IN THE
BACKGROUND OF THIS EARLY
MOTORCYCLE PHOTO.

After World War I, Earl came back to Minnesota and got work as a mechanic and electrician in Fairmont.



PERHAPS IT WAS AN AD LIKE THIS ONE FROM THE JULY 1919 PINE POKEE THAT CONVINCED EARL TO PURCHASE A DORD.

EARL GRAY 1922 IN THE LITTLE DORD

Earl had tuberculosis and spent considerable time recovering during 1920 - 1923, at the Ah-Gwah-Ching Sanatorium near Walker.



AH-GWAH-CHING 1921



AH-GWAH-CHING 1921

One of Earl's best friends was Spencer Daniels. When Spencer married Ruth Lones in 1924, Earl served as best man.

SPENCER DANIELS AND RUTH LONES MARRIED

Spencer Daniels and Miss Ruth Lones were united in marriage at the home of the bride's mother in Mankato on Tuesday afternoon, December 23rd. Miss Winnifred Daley and Earl Gray attended the bridal couple. Only relatives and one or two friends were present at the ceremony.

A wedding dinner was served, following the ceremony, and the newlyweds left for the Twin cities that evening. They will make their home in Webster, Wis., where Mr. Daniels is engaged in the oil business.

The groom is the son of Mrs. A. H. Daniels, who recently left Pine City to make her home with her daughter in Wadena. He came here with his folks in 1913 and attended the local schools. On leaving school here, he went to Crosby where he was employed in a bank for a couple of years. He was in the service during the war and on his discharge he took a position with the U. S. Internal revenue department with headquarters at Fairmont. He later opened an office as a public accountant in Mankato and a couple of months ago purchased the business at Webster.

The bride was born and raised in Pine City, graduating from the local high school in 1915. She taught school for three years and then took a course in the Minnesota business college. After her graduation there, she took a position with the revenue department at Mankato where she has resided since.

The many friends of the newlyweds here will be pleased to hear of their marriage and will join in extending congratulations and best wishes.



SPENCER DANIELS



RUTH LONES



D.S. MILNE & DAUGHTER
BETTY LOU

Earl worked in Fairmont, Minnesota as a mechanic and an electrician for D.S. Milne.



EARL'S HOME IN FAIRMONT

PINE POKER
JANUARY 1, 1925

Earl was killed in a plane crash in October 1930.

EARL GRAY KILLED IN AIRPLANE CRASH IN IOWA LAST FRIDAY

Pine City was shocked last Friday evening when word was received here announcing the death of Earl Gray and a fellow-pilot, Roy Pond, which resulted from an airplane crash near Nevada, Iowa. Earl was killed instantly and Pond lived only a few minutes, dying before he reached a sanatorium at Nevada.

The accident occurred on the farm of Roy Pond's parents, Mr. and Mrs. Charles Pond, as they were taking off in Earl's Monocoque on their return to Fairmont about 4 o'clock Friday afternoon.

Earl was handling the controls of the plane and was starting to circle above the house, just after taking off, as Mr. Pond Sr. was standing near the house waving goodbye to the two pilots. At a height of about 300 feet, something went wrong, as the plane was banking to a turn and shot toward the earth in a nose-dive, crashing on one wing and burying itself in the ground. The impact of the crash threw both the occupants forward and they were crushed on the dashboard of the plane.

With Pond's father near the house was Hans Anderson, an automobile salesman, who was watching the takeoff. Neither was able to say what caused the accident. The plane dragged in the farm yard less than thirty feet from the saltman's run, near which they were standing.

Earl and Pond left Fairmont about 7 o'clock Friday morning for Boone, Ia., where Earl was to take an examination for a pilot's license, after which they flew to the Pond home for a short visit there.

Roy Pond was quite well known here as he had accompanied Earl to Pine City in the plane last summer when a number of local passengers were taken up. Earl's Monocoque won most of the honors at the recent air celebration held at Jackson. Piloted by John Kipp, with Earl at his side, the ship took first in the closed slip race, first in the dead-stick landing and third in bombing. Earl had planned to fly to Pine City Saturday afternoon, to spend the week end with his brothers here, John and Myron.

Following receipt of the news of the tragedy here, Royal Gray, accompanied by Cecil Bismarck, left for Fairmont, arriving there about 4 o'clock Saturday morning. Immediately upon their arrival there they were taken by D. S. Milne, Earl's employer, to Nevada. They found the plane a total wreck, with the exception of the motor which was removed and taken to Fairmont. Earl's body was brought direct to Pine City for interment.

Military Funeral

The last sad rites for Earl Gray were held last Monday afternoon, with services by Rev. Lorenz Johnson in the Methodist church at 2:30 o'clock under the auspices of the Leon Heath Post of the American Legion. Military Honors were paid to the former soldier by comrades as the flag-draped casket was lowered to its final resting place with the ringing of the regulation salute by a guard from Battery B "Taps"; the bugle call that summons all American soldiers to rest, was sounded by Kenneth Cox, battery wagner. The funeral cortege was preceded from the church to the cemetery by a color guard, bearing the United States and American Legion flags, the firing squad and guard of honor. The remains were laid to rest in Greenwood cemetery. The pallbearers were, Erick Larsson, I. A. Cammack, George Daley, Dick Kowalek, Wm. Chalmers and A. C. Klinker.

As the services were being held at the cemetery Carl Froehman in his plane circled overhead and dropped flowers as a final tribute to the departed pilot. Captain Kipp, accompanied by a flyer of the Marines, also flew up from the Wold Chamberlain field to attend the funeral.

Earl Eugene Gray was born in Pine City, July 11, 1895, the son of Mr. and Mrs. Jonas Gray and was 34 years, 3 months and 29 days of age. He attended the local schools and remained with his folks here until 1919, starting to work here as an electrician and automobile mechanic. On leaving Pine City, he attended the Bina electrical school in Washington, D. C. In 1917, he entered the employ of the Bell Telephone Company in Pottsville, Penn., remaining there until he enlisted in the aviation corps in the World War. He was stationed at the army aviation fields at St. Louis, San Antonio, Texas and Mather Field, California, and was discharged at Baltimore after 22 months of service. He spent two years working at Virginia, Minn., one year in California, and then worked as a mechanic and electrician at Fairmont. He suffered an attack of tuberculosis of the throat and after a three-year fight conquered that disease and returned to his work. He took additional aviation instruction and purchased the new Vebe Monocoque last spring and just before his death removed a limited commercial pilot's license. Left to mourn his departure are three brothers, Darwin of Brainerd, and John and

John, residing there and all he enlisted in the aviation corps in the World War. He was stationed at the army aviation fields at St. Louis, San Antonio, Texas and Mather Field, California, and was discharged at Baltimore after 22 months of service. He spent two years working at Virginia, Minn., one year in California, and then worked as a mechanic and electrician at Fairmont. He suffered an attack of tuberculosis of the throat and after a three-year fight conquered that disease and returned to his work. He took additional aviation instruction and purchased the new Vebe Monocoque last spring and just before his death removed a limited commercial pilot's license. Left to mourn his departure are three brothers, Darwin of Brainerd, and John and

John, residing there and all he enlisted in the aviation corps in the World War. He was stationed at the army aviation fields at St. Louis, San Antonio, Texas and Mather Field, California, and was discharged at Baltimore after 22 months of service. He spent two years working at Virginia, Minn., one year in California, and then worked as a mechanic and electrician at Fairmont. He suffered an attack of tuberculosis of the throat and after a three-year fight conquered that disease and returned to his work. He took additional aviation instruction and purchased the new Vebe Monocoque last spring and just before his death removed a limited commercial pilot's license. Left to mourn his departure are three brothers, Darwin of Brainerd, and John and

(Continued on last page.)

EARL GRAY KILLED IN AIRPLANE CRASH

(Continued from page 1.)
Royal at Pine City. Earl had a host of friends in this community and was respected and admired by all who knew him.

Earl was a member of the Monocoque lodge at Pine City and the Fairmont Chapter of Royal Arch Masons and was also a member of the Fairmont American Legion Post.

Friends and relatives from out of town here for the funeral were:

Mr. and Mrs. Darwin Gray of Brainerd, Charles, Hattie and Miriam Blackweather of Osceola, Mrs. Wolf and daughter and Glenn Elmer of Harsh, Mr. and Mrs. Shirley Cooper of North Branch, Mrs. Frazier of Sandstone, Mrs. Carl Wallace of Poplar, Wis., Mrs. Parker of Albert Lea and her daughter, Miss Ethel Parker of Sandrock, Mr. and Mrs. Spencer Daniels of Webster, Wis. and Dr. and Mrs. Deagen and Frank Perry of Fairmont.

The following is taken from the Fairmont Sentinel:

"Earl was not only an excellent mechanic but a salesman as well, and amicable of his time was devoted to selling automobile accessories throughout the territory. In this way he established a wide acquaintance and had many friends who admired him for his quiet, unassuming manner and for the honesty of his character.

"Earl was also a good mechanic, being familiar with various kinds of machinery, particularly automobiles. Ever since boyhood he had a desire to fly and he learned the fundamentals of aviation several years ago.

"When Earl had learned to fly before he knew Pond the latter had given him much valuable information in the flying game and had operated Gray's plane as pilot on numerous flights. Later when Pond got local employment, John Kipp, of Winnebago, operated Gray's plane.

PINE POKER
OCTOBER 16, 1930

Left Eight o'clock.
"I'll see you tonight for supper," Gray told Mrs. J. B. Gucken, with whom he boarded, yesterday morning when he left to fly to Boone.

"Earl was exceptionally light-hearted and happy when he went away," said Mrs. Gucken. "Sometimes he was depressed or had forebodings upon taking an air trip and he would tell me, 'I better say my beard hilt, I may get killed.' But yesterday I never saw him so bright and jolly. He ate an early breakfast, about 8 o'clock, so he could get away in good time. He had boarded with us for five years and was like one of the family."

"Gray roomed with Mr. and Mrs. Frank Nichols, who were equally grief-stricken over the disaster which robbed them of a friend of long standing.

With Milne Six Years

Gray had worked at D. S. Milne's garage since six years, starting about 1923. Mr. Milne stated as he told of Earl's many fine qualities. Gray suffered from pulmonary trouble and was compelled to quit work for a couple of years and go to the Veterans hospital. He returned about a year ago and had been with the garage since that time.

"Earl took up flying about two years ago. He got started on it while in the army and altogether was said to have about 170 flying hours to his credit.

"He had gone to Boone yesterday to take a pilot's examination.

"Gray's parents are dead. He is survived by three brothers, Darwin, of Brainerd and John and Royal of Pine City.

"The death of his brother Lawrence in Fairmont, Feb. 28, last, was a tragedy in Earl's life. He had got Lawrence through dental school, in spite of Earl's own frail health. A year after Lawrence had been established in practice in Duluth he was stricken with sleeping sickness. He was in a hospital at Davenport, Iowa, but Earl brought him to Fairmont so he could be with him. He obtained horse care for the patient from Mrs. James McFerry at whose residence Lawrence lay helpless for 12 months until he died. Throughout this time, Mrs. McFerry said today, Earl watched over him and rendered every possible service and assistance. "Earl was a wonderful brother to him," said Mrs. McFerry.

"Most sorrowful of the news of the terrible tragedy is his fiancée, Ethel Parker, to whom Earl was engaged to be married this winter. They had been friends for a long time and Miss Parker had accompanied him on numerous flights. She is employed at the Bob Wallace Mercantile company.

Lorenzo was Jonas and Florence Gray's youngest son. He was born November 29, 1900, in Pine City. With the help of his brother Earl, Lorenzo went to dental school and set up a practice in Duluth in 1923. A year later Lorenzo became ill with sleeping sickness. His brother Earl took care of him until his death in February 1930.



"HIS FIRST LONG PANTS"
LORENZO ABOUT 1916

PINE POKER
JANUARY 1, 1925

DR. LORENZO GRAY MARRIED CHRISTMAS

A romance that started at the state university five years ago reached the happy finale Christmas afternoon when Dr. Lorenzo Gray and Miss Clara Ness were united in marriage at the home of the bride's parents in Duluth. The wedding ceremony was performed by Rev. Halverson, Norwegian Lutheran pastor, of Duluth. Miss Myrtle Ness, sister of the bride, and Henry Anderson, cousin of the groom, attended the bridal couple. John Gray of Pine City was to have acted as best man but was unable to be reformed from his duties at the local depot.

The wedding was a quiet one only immediate relatives of the bridal couple being present. A wedding dinner was served, following the ceremony, for the bridal couple and the guests. The newlyweds will be unable to take a wedding trip at this time, owing to the thriving practice of the doctor.

The groom is the son of Mrs. Florence Gray of Pine City and was born and raised here. He is a graduate of the local school and on completion of his studies here, he entered the state university where he took a course in dentistry, graduating from the dental school in June of 1923. In August of that year he opened an office in Duluth and his practice has grown by leaps and bounds.

His popularity of his boyhood days in Pine City has followed him to Duluth and he stands very high in his profession there, having been elected treasurer of the district clinic which includes a number of the range towns.

The bride is the daughter of Mr. and Mrs. Marcus Ness of Duluth and has resided there with her parents most of her life. She is a graduate of the state university also, where she specialized in home economics, millinery and commercial tailoring. She is at present teacher of domestic science in the Central High at Duluth. She is quite well known here as she has visited at the Gray home in Pine City a number of times.

The many friends of the groom in this community will join in congratulations to the newlyweds.

Mrs. Gray attended the wedding of her son, returning home the latter part of last week.

On Christmas Day 1924, Lorenzo married Clara Ness. They had no children.

DR. LORENZO GRAY DIED THIS MORNING

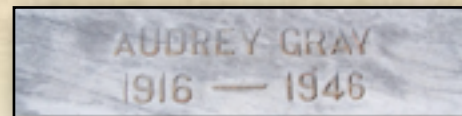
Dr. Lorenzo Gray, brother of R. J. and John Gray of Pine City, passed away at Fairmont this morning at 4 o'clock. Funeral services will probably be held here although arrangements hadn't been made as we go to press.

Dr. Gray was born and raised in Pine City. He is a graduate of the local high school and of the dental college of the University of Minnesota. He practiced in Duluth a few years ago until forced to quit on account of poor health. He has been at Fairmont the past couple of years where his brother Earl is employed. He is survived by his wife and four brothers, John and R. J. of Pine City, Darby of Little Falls and Earl of Fairmont.

R. J. Gray went to Fairmont Tuesday on account of the critical condition of his brother.

PINE POKER
FEBRUARY 27, 1930

That is the end of the Jonas Gray family. Five sons and only one heir, Royal's son Audrey, to carry on the name. We could find no evidence that Audrey had children. It appears he died in California at age 30.



GRAVE MARKER
SANTA CRUZ COUNTY, CALIFORNIA

Royal, the only Gray son who had children of his own, also had two daughters, Bette & Virginia.

Bette Gray and Ed Peterson Wed

—★—

On Saturday, April 17th, 1943, at 9 p.m., Miss Bette F. Gray, daughter of Mr. and Mrs. Bert Wheeler of St. Paul, became the bride of Edwin V. Peterson, of Tift, California, son of Mr and Mrs. Charles Peterson of Pine City, in a single ring wedding, performed at the Wilshire Chapel in Los Angeles, California.

The chapel was beautifully decorated with gardenias, camellias and sweet peas, and light was furnished by candles. A continual organ concert was played throughout the length of the ceremony. The bride came down the aisle on the arm of her stepfather, Mr. Wheeler, while the Lohengrin Wedding March was played by Mrs. James of Los Angeles. Rev. Jessee performed the ceremony with about thirty to forty friends and relatives of the bridal couple in attendance.

The bride was beautiful in a gown of lace and white chiffon, and wore a finger tip veil. Her bouquet was Colonial style of camellias and white sweet peas. Her attendant, Mrs. Harlan Larson (nee Elaine Olson) formerly of Pine City, now residing in California, was attired in blue net and carried a bouquet of vari colored sweet peas. The groom was attended by Farlan Larson, friend of the couple.

Following the ceremony, a wedding dinner was held for 8 guests at the home of Mr. and Mrs. Frank Hyde in Los Angeles.

The happy couple will make their home in California, where Eddie is now in training as an air cadet in the army air corps. Mrs. Peterson is employed by the Retail Credit company at Los Angeles, as a stenographer.

Both Mr. and Mrs. Peterson are well known in Pine City, having attended the local schools, and both being employed by the Coca-Cola bottling company at one time.

Bette married Edwin Peterson. Bette and Edwin had 4 children. Bette died in 2014, at the age of 95. She is buried at Fort Snelling with her husband.

Virginia married Dr. Leo Albert Zaworski. Virginia died in 1987, and is buried at Sunset Memorial Park Cemetery in Hennepin County, Minnesota. She had two daughters.

**Virginia Gray-
Dr. L. Zaworski
Wed February 15**

Virginia Gray, daughter of Mrs. Bert Wheeler of St. Paul, became the bride of Dr. Leo A. Zaworski, son of Mrs. E. A. Zaworski of Minneapolis; at a nuptial high mass in St. Mark's church, Saturday, February 15. Reverend Father Roufs read the 9:00 a.m. service while appropriate music was provided by the organist and soloist.

The bride was beautiful in a white satin gown fashioned with long sleeves, sweetheart neckline, long train and finger tip veil held in place with a pearl seed crown. She carried a bouquet of orchids and white roses.

Attending the bride were two friends, Mary Biglow and Janeth Moore, both of Minneapolis. They wore floor length pastel stripe taffeta gowns with coronet crowns and carried colonial bouquets of carnations.

The bridegroom was attended by his brother, Edward Zaworski of Minneapolis as best man, and Dr. Charles Ziegler, a friend, of Pennsylvania, served as usher.

Following the ceremony, a wedding breakfast was served to the bridal party. Later, a reception was held in the Hennepin room of the Nicollet for 100 guests and a buffet luncheon was served.

Later, the couple left for Chicago and points east. They will be at home at 1410 Portland St., Minneapolis, after March 1st.

Virginia is well known in Pine City, having lived here for a number of years. She is a graduate of the Pine City high school and University of Minnesota and has been employed in the Dowry Medical Arts Clinic as an X-ray technician. Dr. Zaworski is a graduate of St. Mary's college, Winona and Marquette University medical school.

Those from Pine City who attended the wedding were Mr. and Mrs. J. H. Gray and Mrs. Robert Wilcox.



A local history project by:
Pine City Area History Association

Preserve & Share Pine City Area History

For some reason, we received a variety of items, from multiple sources, connected to the Jonas Gray family over a six-month period in 2017. Coming across the Gillette Hospital video was the impetus to organize the material to tell their story. We are grateful to everyone who contributed a piece to the puzzle. In 2019, the arrival of a second Earl Gray photo album, along with some family photos tucked into a third album, provided the material needed to fill out our original project and turn it into a book. Special thanks goes to Mavis Olson Hotchkiss, the step-daughter of John Gray. She has been safe guarding the photo albums for years and felt it was important that they go somewhere. We are very happy to be that somewhere.

Our thanks go out to:

Bob Carlson

Jim Foster

Mavis Olson Hotchkiss

The Pine City Pioneer

Patti Bisset

Margery Stratte Swanson

Nora McKinnon

To learn more about the Pine City Area History Association visit our Website
at: pinecityhistory.com

or join us on Facebook at: facebook.com/PineCityHistory

Copies of this book can be ordered from our website:
pinecityhistory.com



315 Main Street South, Suite 170

Pine City, MN 55063

320 - 322 - 9208

Email: pcahistory@gmail.com

THE JONAS GRAY FAMILY



PUBLISHED IN 2020 By:
Pine City Area History Association