

Pine City Remembers

Highway



photo courtesy of Jim Foster from the Martin A Johnson Collection, taken by Moen Photo of LaCrosse, Wisconsin

Pine City Remembers Highway



photo courtesy of Jerry Lindstrom

Compiled in 2015 by Judy Scholin as a local history project in conjunction with:



Pine City Area History Association

Highway 61 & Pine City



Highway 61 was originally called Highway 1 and ran from St. Paul to Duluth. In 1925, three blocks in Pine City, from 2nd Avenue to 5th Avenue, were paved.



photo courtesy of Jim Foster from the Martin A. Johnson Collection, taken by Moen Photo of LaCrosse, Wisconsin

A 1920s view of Highway 61.

Highway 61 & Pine City



In 1930 Doctor Stratte needed a place to house his young family and his medical practice. The James Wandell house, at 525 Main Street, suited his needs and his children grew up watching the world pass by their front porch.



Photo courtesy of Margery Stratte Swanson

Margery and Alf Stratte about 1932.



Photo courtesy of Margery Stratte Swanson

Jon Stratte about 1940.

Highway 61 & Pine City



Margery Stratte Swanson remembers there were a lot of buses on Highway 61. Using the bus to go to the Twin Cities was very common.



Margery also remembers that there was a strap she could pull to tell the driver to stop. Often the driver would drop her off right in front of her house, which was handy if you had a suitcase.



Highway 61 & Pine City



Over the years many businesses sprang up along Highway 61 to serve the traffic.



Photo courtesy of Margery Stratte Swanson

Gas Stations



Photo courtesy of Michael Sauser

Hotels



Photo courtesy of Harold Kick

Restaurants

The businesses have changed over the years to meet the diverse needs of those traveling Highway 61.

Highway 61 & Pine City



This Standard Oil station at 195 Main Street South was built about 1920. It replaced Otto Kowalke's Saloon, and was one of the first gas stations in town. Owner Clarence Johnson is pictured in the doorway, Cecil Blanchard is on left and Jack Karsky is on the right.



Photo courtesy of Jenny Olson

Highway 61 & Pine City



1931 ad

Early Standard Oil stations sold Red Crown Gasoline.

The first gas pumps at the station in Pine City were Red Crown visible pumps.

The attendant would hand pump the gas into the glass tank at the top of the pump. White lines marking the glass tank showed how much gas was pumped before it was put into the customer's gas tank by gravity flow.



Highway 61 & Pine City



By 1949 the original brick building at 195 Main Street South had been added onto and was considerably larger. Standard Oil owned the building and it was built to their specifications. The building was then leased to the business owner. Clarence Johnson operated the business for many years. In 1953, Robert Olson took over the business and it still remains in the family.



Photo courtesy of Jenny Olson

Highway 61 & Pine City



In this picture from the early 1960's, the four gas pumps have been replaced with two modern pumps. Note the price of gas: 34¢ a gallon. When gas went over a dollar a gallon the gas pumps had to be replaced again, as they weren't designed to sell gas that cost more than a dollar a gallon.



Photo courtesy of Jenny Olson

Highway 61 & Pine City



Over the years, the station has changed. It no longer sells gasoline and the outside appearance has altered, but if you stop in and look around, the past is clearly evident. The men's restroom from the original building has been converted to an office, the brick outline of that building is still visible, vintage cigarette and candy machines are still in place, years of softball and demolition derby trophies line the walls and if you take time to talk to the current owner, a son-in-law of Robert Olson, you will hear all kinds of tales from the days when the Standard Oil station was one of the busiest places in town.



Photos courtesy of Judy Scholin

Highway 61 & Pine City



Webber's Service Station at 235 Main Street was another early Highway 61 business devoted to the automobile.



Photo courtesy of Michael Sauser

Highway 61 & Pine City



Webber's was an official "Good Year Service Station" and featured United States tires and Royal and Osco parts.



Photo courtesy of Michael Sauser



Photo courtesy of Judy Scholin

Today the building still stands but it houses a Legal Aid Service.

Highway 61 & Pine City



Places to eat were soon found up and down Highway 61. The restaurant at the corner of Main Street and 2nd Avenue was one of the first to appear. It was originally called Pine City Cafe, but soon became the 61 Way Cafe, a name that stuck until it ceased being a restaurant in the 1990s.



photo courtesy of Jim Foster from the Martin A Johnson Collection



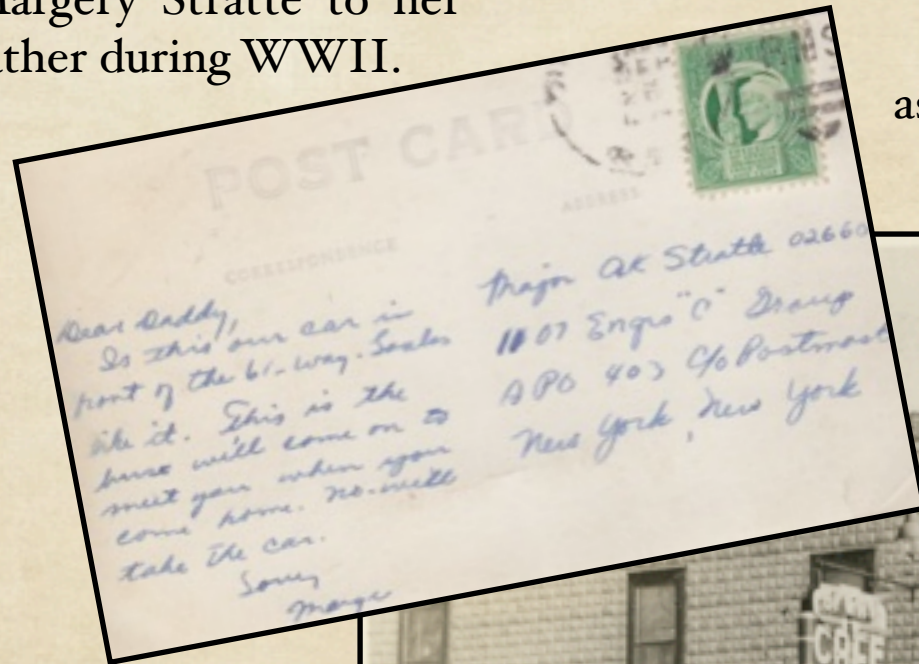
Photo courtesy of Jim Foster

This postcard of the 61 Way Cafe was sent by Margery Stratte to her father during WWII.

Highway 61 & Pine City



For many years the 61 Way Cafe also served as the Greyhound Bus Depot for Pine City.



Postcard courtesy of Margery Stratte Swanson

Highway 61 & Pine City



Photo courtesy of Jim Foster

Later versions of the 61 Way Cafe.



Photo courtesy of Todd Lindstrom

From the 1948 telephone book.

61 WAY CAFE	TELEPHONE
MEALS, LUNCHES, FOUNTAIN SERVICE, BEVERAGES QUALITY FOODS, HOME COOKING COOKED RIGHT, SERVED RIGHT, TASTE RIGHT	40

Highway 61 & Pine City



Another long time eating establishment is located at 255 Main Street South. Today it is Nicoll's, but it began its life as a saloon built in 1897 by Theodore Buselmeier. Naturally it sold the locally made Buselmeier Beer.



Photo courtesy of Judy Scholin



Photo courtesy of Loretta Tobeck



1900 Ad

While Theodore Buselmeier built the building, and his brewery supplied the beer, he did not run the saloon. The first saloonkeeper in this building was Joseph Hetzenecker, followed by Louis Petricka.

Highway 61 & Pine City



Free Lunch Always on hand.

LOUIS STEINPATZ

Good Combination Pool and Billiard Table in Connection.

DEALER IN

PURE WINES, FANCY LIQUORS, FOREIGN and DOMESTIC CIGRS.

We carry a large variety of Bottle Goods. Buselmeier Beer always on Tap. Phone No. 35.

1908 Ad

By 1903 Louis Steinpatz had taken over the business. When prohibition went into effect the saloon closed and the space was used as a theatre for a few years. Then the building was remodeled by Frank Bukachek and in March of 1922 Theodore Buselmeier opened a shop called the Kozy Korner. In addition to a soda fountain the Kozy Korner sold cigars, school supplies, stationery and candy.

Kozy Korner ads from 1922 & 1923

Kozy Korner

KOZY KORNER is now open. Come in and let us demonstrate our ability to serve you.

We carry a complete line of box and bulk candy, cigars and smokers' supplies, school supplies and stationery.

Try Our Delicious SUNDAES AND SODAS

The Store Where Quality Counts.

SATURDAY SPECIALS

Armond's cold cream powder 90c
 Colgate's talcum powder, with sample bottle of toilet water 20c
 Colgate's tooth paste 10c
 Fletcher's castoria 29c
 Blue Jay corn plasters 15c

10 per cent discount on all films

Our Drug Sundries are all fresh stock. Come in and look them over.

NOT THE CHEAPEST BUT THE BEST!

Kozy Korner

Highway 61 & Pine City



**Christmas
CANDY**

Fresh "Old-Time"
Mixed Hard Candy
Assorted Cream Candy
Wonderful Line of
Beautiful Box Candy
Buy Her a Box of Candy

PETSCHEL'S CAFE
and
Confectionery Store

The Kozy Korner operated until 1924 when Joseph Petschel rented the location and moved the Petschel cafe in. Petschel's Cafe was reputed to be one of the best restaurants on the drive up Highway 61 from St. Paul to Duluth.

1924 Ad

Where Friends of the Highway Meet

PETSCHEL'S CAFE

CHICKEN AND TURKEY A DAILY SPECIALTY
BOOTH AND TABLE SERVICE

SODA FOUNTAIN **PINE CITY TEL. 140**

1948 Petschel's Cafe Ad



Photo courtesy of Harold Kick

Petschel's Cafe about 1943.

Highway 61 & Pine City



PETSCHEL'S CAFE
Chicken Dinners Served Every Day
BOOTH AND TABLE SERVICE
Telephone 140 Pine City

1938 Ad

Ruth Anderson worked at Petschel's as a waitress in the 1930's. Petschel's employed many country girls like Ruth as waitresses, and since transportation into town was difficult, Petschel's had a building near the cafe where the waitresses could stay. Ruth described the building as a log cabin and said it was very chilly.

Ruth earned a dollar a day. She told stories about the members of the Pillsbury family who would stop at Petschel's for a meal on their way up north. The family would arrive in a limo and everyone wanted to wait on them.

Petschel's had another attraction besides their food. The restaurant had cages of birds. Cleaning the cages fell to the waitresses.



Highway 61 & Pine City



Photo courtesy of Charles Gramling

By 1953, Petschel's Cafe had become Jimmy's, and from their ad in the 1953 phone book, it is clear they felt a bond with Highway 61.

Jimmy's evolved into Pat's, and in 1980 it became Nicoll's, the name it bears today.

IN PINE CITY IT'S ...

JIMMY'S CAFE

Excellent Food

"Where Friends Of The Highway Meet"

- PROMPT SERVICE
- MODERATE PRICES

Call 140

On Highway 61 Pine City

1955 Ad

Highway 61 & Pine City



Famous for its fine dining, Murriel & Paul's Pine Room was probably the most well known of the Pine City Highway 61 eateries.

Murriel & Paul's opened in 1950 in the former Mrs. Buirge's Tea Rooms.



1960 Ad



Photo courtesy of Jim Foster

White linen tablecloths, homemade dinner rolls, and fabulous steaks made Murriel & Paul's so popular WCCO radio personality Cedric Adams even mentioned it on his program.

Highway 61 & Pine City



One of the newest additions to eating establishments along Pine City's stretch of Highway 61 is already considered classic and vintage. In 1955 Al Jahnke built an A&W Drive-In restaurant, one of a new breed of "fast food" eateries. You could order and eat right from your car.



Photo courtesy of Todd Lindstrom

Highway 61 & Pine City



Photo courtesy of Todd Lindstrom

The Frostop, located on Highway 61 north of the river.

The Tastee-freez, located at 505 Main Street.



Photo courtesy of Ann Vach & Michael Sauer

Other similar restaurants came and went.

Highway 61 & Pine City



Photo courtesy of Judy Scholin

Family owned and operated since 1980 by the Berchin family, the A&W has flourished.

It is one of the few A&W Restaurants in the country that still offers carhop service.



Photo courtesy of the Berchin Family

Highway 61 & Pine City



As car travel increased, a new type of lodging came into being. Motor Hotels or Motels were designed to be convenient for automobiles. Pine City soon had motels of its own.



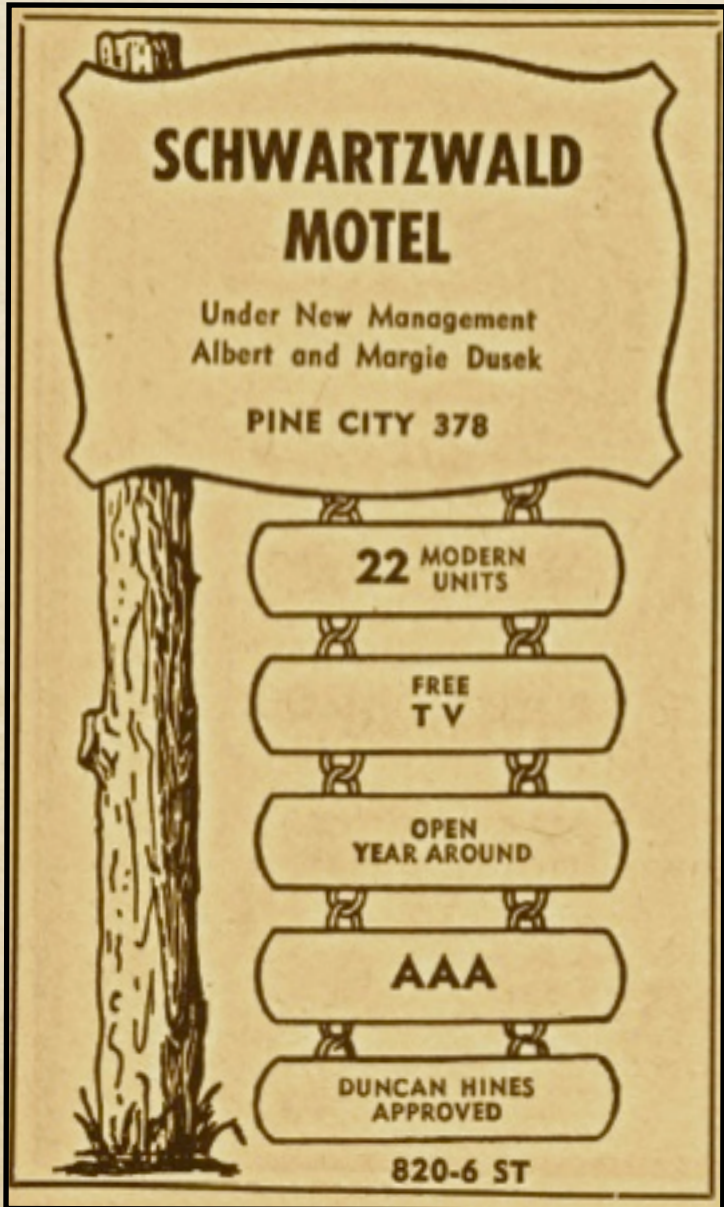
Photo courtesy of Jim Foster

The Gail Motel 1955

GAIL 
MOTEL
"The Pink One on #61"
 12 MODERN UNITS
 STEAM HEATED
 CARPETED
 FREE T. V. IN EVERY ROOM
 Showers & Tubs
 CALL
 PINE CITY
100
 970-6 St Pine City

1960 Ad

Highway 61 & Pine City



1960 Ad



Photo courtesy of Judy Scholin

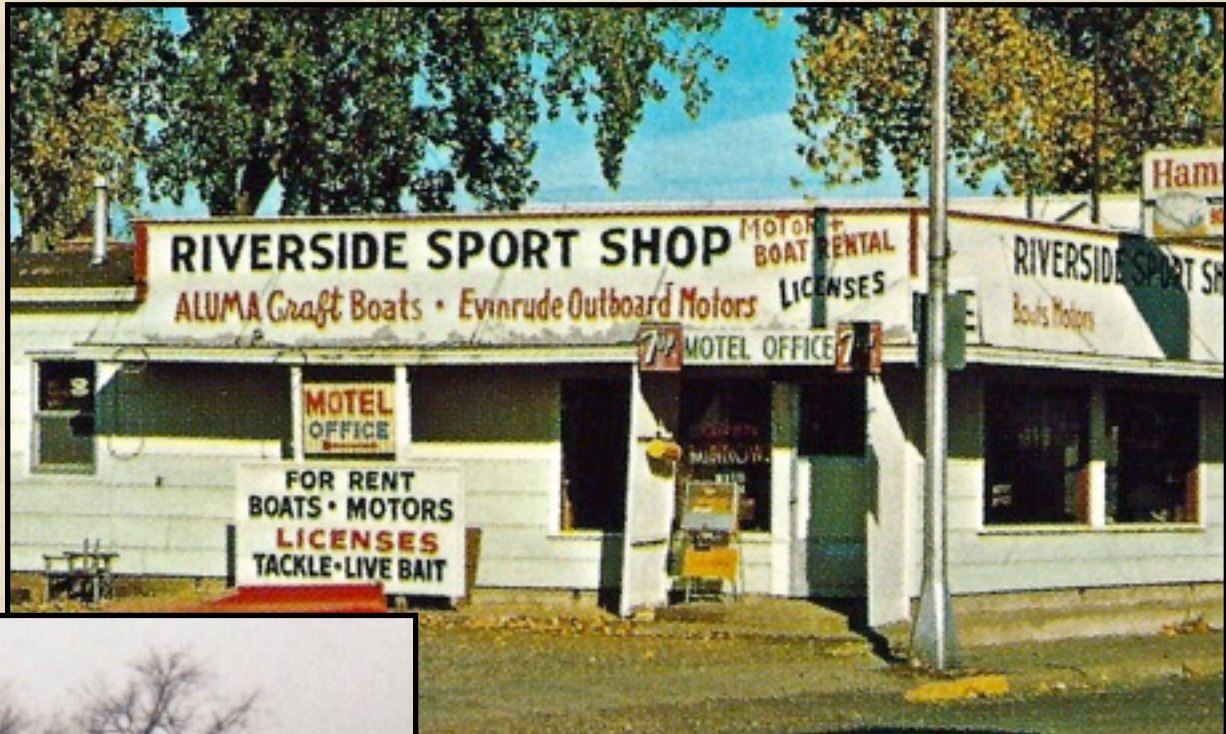
The Old Oak Inn 2013

The Old Oak Inn began its life as the Midway Motel and then became the Schwartzwald Motel for years.

Highway 61 & Pine City



The Riverside Sport Shop, located on the Snake River and Highway 61, offered not only a motel, but also the ability to meet the needs of the traveling sportsman.



Postcard courtesy of Central Minnesota Coins & Antiques



Photo courtesy of Todd Lindstrom

RIVERSIDE MOTEL

OPEN YEAR AROUND

Free TV In Each Unit

Showers & Tubs

NEW DOWNTOWN MOTEL

105-6 St-----Pine City 777

1960 Ad

Highway 61 & Pine City



One Pine City business that has been on Highway 61 since the earliest days is Sauser's Hardware, family owned and operated since 1909.



Photo courtesy of Michael Sauser

Sauser's Hardware 1909



Photo courtesy of Judy Scholin

Sauser's Hardware 2012

In March of 1909, W.A. Sauser bought the LaPage Hardware in Pine City. W.A. had no hardware experience and the other store owners looked at him with skepticism, but clearly W.A. had what it took. A hundred years later, Sauser's is still thriving.

Highway 61 & Pine City



Today the store is run by W.A.'s grandson Michael, and while Sauser's is well equipped to handle the needs of the modern customer, evidence of their hundred year history is everywhere, giving the customer the reassuring feeling that if you buy something at this store it is going to last.



Photos courtesy of Judy Scholin



An early 1900's lantern slide ad.

Highway 61 & Pine City



1940's

Photo courtesy of Jerry Lindstrom



1950's

Photo courtesy of Pine City Pioneer

Highway 61, Pine City's Main Street through the years.



**Reconstruction of
Highway 61 in the early
2000s.**

Photo courtesy of Pine City Pioneer

Index



Anderson, Ruthpage 19
A&W Drive-Inpages 22, 24
Blanchard, Cecilpage 6
Buirge Tea Rooms, Mrs.page 21
Bukachek, Frankpage 17
Buselmeier, Theodorepages 16, 17
Frostoppage 23
Gail Motelpage 25
Greyhound Buspage 14
Hetzenecker, Josephpage 16
Jahnke, Alpage 22
Jimmy's Cafepage 20
Johnson, Clarencepages 6, 8
Karsky, Jackpage 6
Kowalke Saloon, Ottopage 6
Kozy Kornerpage 17
LaPage Hardwarepage 28
Midway Motelpage 26
Murriel & Paul'spage 21
Nicoll's Cafepages 16, 20

Old Oak Innpage 26
Olson, Robertpages 8 - 10
Petricka, Louispage 16
Petschel's Cafepages 18 - 20
Petschel, Josephpage 18
Pine City Cafepage 13
Riverside Motel & Sport Shop ...page 27
Schwartzwald Motelpage 26
Sixty One Way Cafepages 13 - 15
Standard Oil Stationpages 6 - 10
Steinpatz, Louispage 17
Stratte, Dr., Alf, Jonpage 3
Swanson, Margery Strattepages 4, 14
Sausser's Hardwarepages 28, 29
Sausser, Michaelpage 29
Sausser, W.A.page 28
Tastee-Freezepage 23
Wandell, Jamespage 3
Webber Service Stationpages 11, 12

Pine City Remembers

Highway



Compiled in 2015 by Judy Scholin as a local history project in conjunction with:



Pine City Area History Association

Thank you to all the people who contributed photos and information.

A special thank you to Mike Gainor, Jenny Olson, John Schumacher, Jim Foster, Michael Sauser, Margery Stratte Swanson, Candy Ames, Steve Berchin, Jerry Lindstrom, Todd Lindstrom, Charles Gramling, Becky Schueller, Harold Kick, Loretta Tobeck, Martin A. Johnson, Central Minnesota Coins & Antiques, and the Pine City Pioneer.



Pine City Area History Association

Preserve & Share Pine City Area History