

A HISTORY SHORT Creameries



COMPILED
in 2017

By:



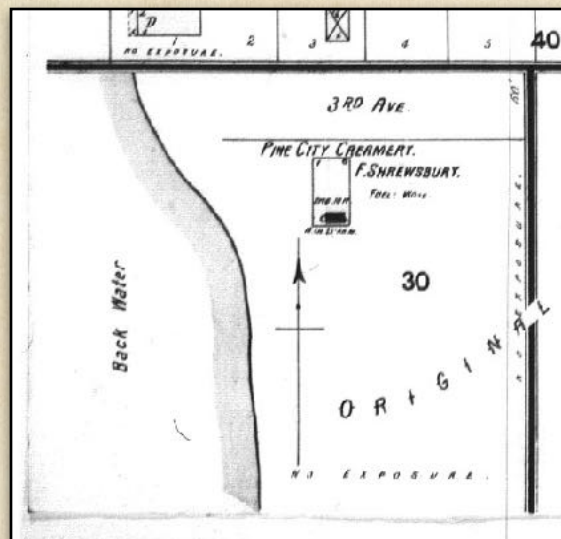
Pine City Area History Association

The Pine City Area History Association's earliest information on creameries is from 1897. Logging had cleared land in the area creating a need to find other sources of income. The dairy industry offered a solution. A firm called Anderson & McLeod built a creamery in the mid 1890s. Its operation was plagued by law suits and shut downs. In July 1898 the creamery was sold to Simpson & Shrewsbury,

—Mr. Anderson, of creamery fame, was up on Tuesday, disposing of the creamery to a couple of gentlemen by the name of Simpson and Shrewsbury, who will commence operating the same on Monday next. They will pay cash for the milk every month. They would like to have all of the farmers who are tributary to this place, to bring their milk in on that day. They guarantee fair treatment to all, and the highest market price for the butter. There is at least twenty per cent more butter taken from the milk at a creamery than can be effected by the old method of a churn at home, and thereby the farmers will secure this benefit. No matter how small an amount of milk your cow gives, club in with a neighbor, and bring it in, and thereby help the creamery to keep going, as well as reap a harvest yourself.

PINE COUNTY PIONEER
JULY 29, 1898

The 1899 Sanborn Map shows the creamery's location at the west end of 3rd Ave SW.



1899 SANBORN MAP

—The following statement of the business done by the Pine City Creamery during the month of May will be of interest to our readers:

Amount of Milk 29,843 pounds
 Amount of butter fat 1,179.25 "
 Cash paid farmers at 14c per pound \$165.09

Here is what nine of the largest contributors brought in during the month of May, and the amount of money they received therefor:

NAME	LBS. MILK	CASH REC.
John Boesch	4,818	\$26.98
J. B. Saumer	3,504	20.58
Frank Soukuk	3,409	18.13
Peter Wascup	2,748	15.26
A. Pangerl	2,346	13.02
Wm. Peters	1,951	11.48
A. Petschel	2,003	11.20
J. Handeuh	1,917	10.36
M. Osen	1,812	9.52

PINE COUNTY PIONEER
JUNE 23, 1899

The creamery continued to be operated in fits and starts making it difficult to staff.

In 1900 two local men, F. A. Hodge and P.W. McAllen bought the creamery. In an effort to make the creamery business more stable they attempted to make it easier for local farmers to purchase good cows. In spite of their best efforts the creamery struggled to remain in business.

—McAllen & Hodge have purchased the Pine City Creamery and will have it put in first class condition at once. They will engage a first-class buttermaker and endeavor to put the creamery business on solid basis in Pine County.

PINE COUNTY PIONEER
FEBRUARY 2, 1900

MILK COWS

Hodge & McAllen will Supply Farmers
in This Vicinity.

In order that the farmers in this vicinity may be enabled to purchase milk cows at a reasonable price Messrs. Hodge & McAllen have purchased 200 cows which they will sell to all farmers tributary to the Pine City creamery at a very low price, allowing purchasers two years time in which to pay for the cows. The first installment of 70 cows will arrive here today, (Friday) and will be put on sale at once. This is a splendid opportunity for farmers to purchase good stock and should be taken advantage of at once.

PINE COUNTY PIONEER
MARCH 23, 1900

Creamery Closed.

Wednesday morning the creamery at this place shut down for the winter. It was hoped by the management of the Pine City Creamery to be able to keep it running all winter but there has been such a falling off in the amount of milk received at the creamery that it was thought advisable to close it down for the winter. The creamery has paid better this season than ever before and it is to be hoped that when it starts up in the spring it will run continuously all the year around. Robt. McKay, who has had charge of it for the past month or six weeks, informed us two weeks ago that he was afraid it would have to close down as they did not receive milk enough to make pay. Creameries are the making of the farmers in this part of the state and it seems a shame that so good a creamery plant as the one at this place has to lie

PINE COUNTY PIONEER
OCTOBER 4, 1901

In 1904 area farmers joined together to form a cooperative creamery. H. J. Rath offered land on the banks of Cross Lake to be used for a creamery. Officers and trustees were elected. However the third meeting was almost the undoing of the new cooperative. Disagreement over where to locate the creamery was so intense the group nearly came to blows. After some members departed in a huff adjustments had to be made to the board of trustees, but the creamery was soon up and running.

HAVE AND HOLD

Saturday's Creamery Meet Turns Out Successfully After Being Wrought With Strife. Old Creamery Being Moved.

The creamery meeting last Saturday afternoon was not the success that it should have been, owing to a little misunderstanding it came very near being a complete fizzle.

PINE COUNTY PIONEER
MARCH 25, 1904

The meeting was called to order by the President, C. C. Ives, a proposition was read from Hodge & McAllen offering their complete creamery plant as it now stands and three lots for the sum of \$1,500.00, or the creamery without the ice house for the sum of \$1,200.00, or the creamery and contents to be moved off the ground within a reasonable time for the sum of \$1,000.00. Each of the propositions were discussed, and at last it was decided to accept the thousand dollar one. Right here is where the trouble began, one faction wanted to accept of the \$1,200.00 proposition and leave the creamery where it is, and the other faction wanted to move it to the site on Cross lake.

The row, as it might well be called, waxed stronger and stronger, until the participants came very nearly coming to blows, at last it was decided to put it to a vote which proved that the moving faction were the stronger and it was decided to move the building to the new site, whereupon some of the other faction had their names taken from the list, some six or seven stock-holders and two of the newly elected officers.

It was thought for some time that this would be the end of the creamery boom, but after the excitement had subsided and the disturbing ele-

ment had left the room, a few of the farmers reorganized and everything was in fine running order in a short time.

Herman Johnson and C. C. Ives changed offices, as Mr. Ives said he did not feel that he understood the workings of creameries well enough to hold the office of president. The secretary leaving necessitated the election of a new secretary, and on motion Ed Sward was chosen, Ignus Chmielek was elected trustee to fill the vacancy caused by the withdrawal of Mr. Resch.

Herman Teich and Al Rice said they would move the creamery for the sum of \$150.00, but the trustees thought this amount too high and deferred letting the contract until their next meeting which was held Wednesday afternoon at two o'clock, when bids were received.

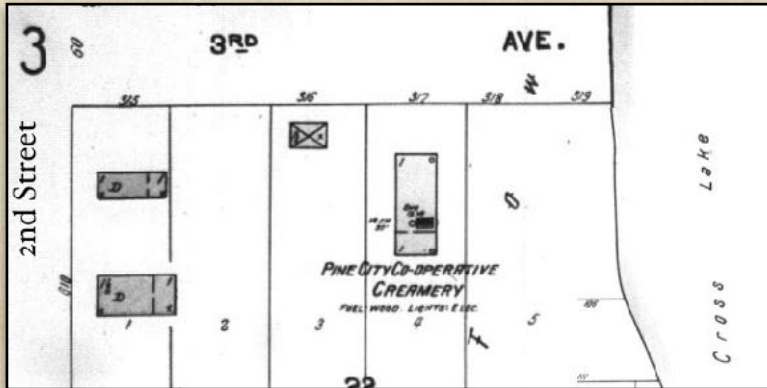
There were four bids for the job. Frank Karas being the lowest bidder the contract was let to him for ninety-eight dollars, and his bond placed at \$200.00.

A. N. McLaughlin, a machinist and butter maker of eight years experience, was hired at a salary of sixty-five dollars per month to set the machinery and run the creamery.

Frank Karas began moving the machinery Thursday and informs us that if the weather permits he will have the building on the ground by Saturday night, and the company expect to have the creamery running by the first of May.

In 1904 area farmers joined together to form “The Pine City Co-Operative Creamery Co.” Officers and trustees were elected. The organization bought the creamery building from Hodge & McAllen and paid Frank Karas \$98 to move it to the opposite end of 3rd avenue.

1904 SANBORN MAP



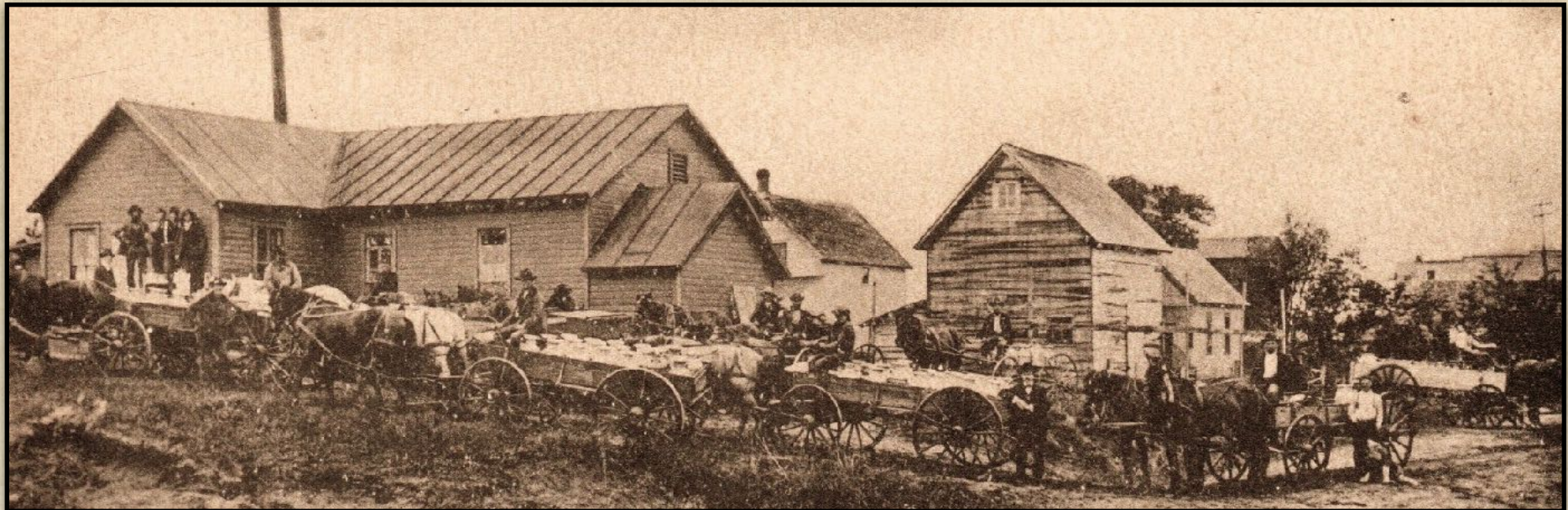
1904 OFFICERS AND TRUSTEES

President, C. C. Ives;
 Vice Pres., Herman Johnson;
 Secretary, George Dorr,
 Treasurer, George Kick;
 Trustee, August Borg,
 " " John Resch,
 " " J. T. Mider.

Patrons of the creamery can receive a picture of their building by applying at the Pine City state bank. The pictures were taken by Mr. Claggett and they are beauties. A large number of teams and wagons and patrons, together with the building, are shown upon the photo.

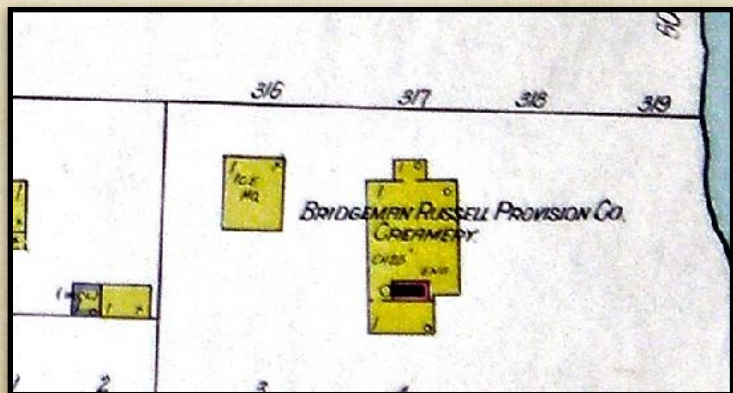
PINE COUNTY PIONEER
 JULY 28, 1905

1905 PHOTO BY CLAGGETT OF CO-OP CREAMERY



The Co-op creamery operated for a few years but sometime between 1907 and 1911 it ceased to exist. The 1911 Sanborn map shows the creamery in the same location as 1904 but it had become part of the Bridgeman Russell operation and by the 1921 Sanborn map this building is labeled, vacant. In 1917 a second Pine City Co-operative Creamery was established. A new creamery building was built a block west of the previous Co-op creamery.

1911 SANBORN MAP

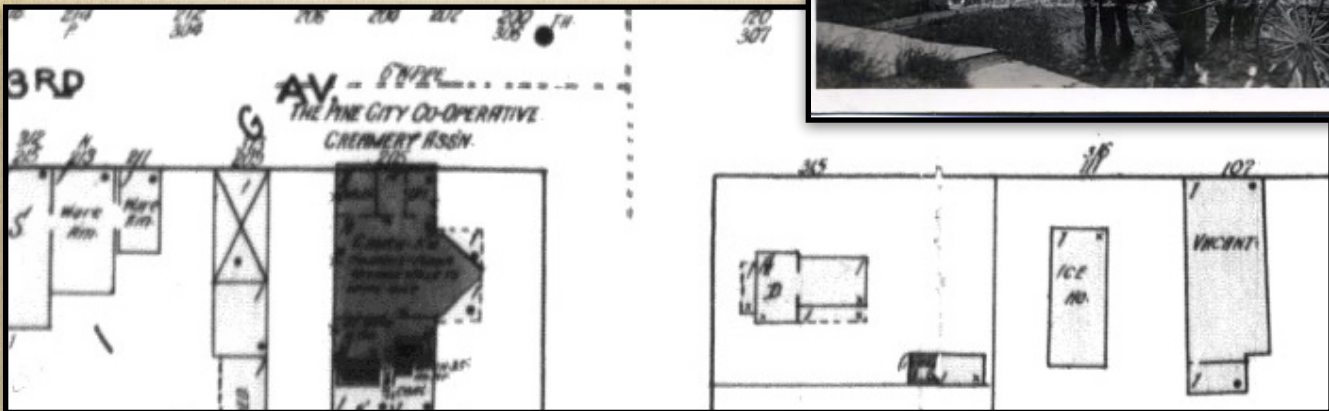


1917 PINE CITY CO-OPERATIVE CREAMERY



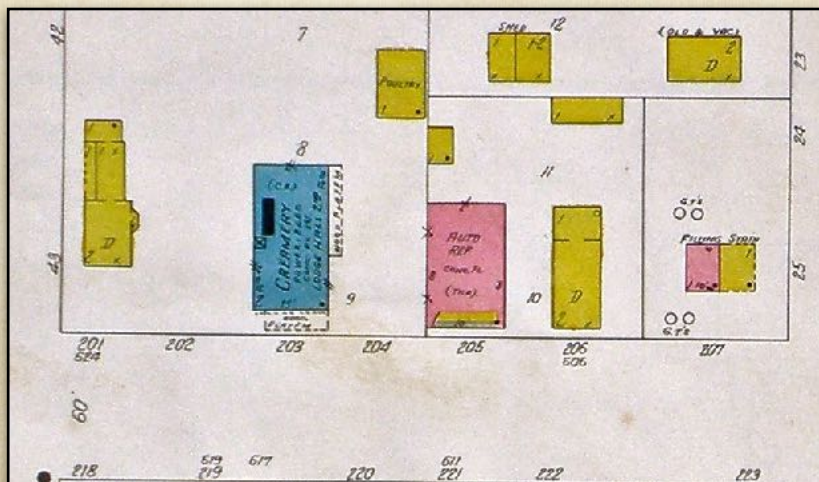
photo courtesy of Jim Foster

1921 SANBORN MAP

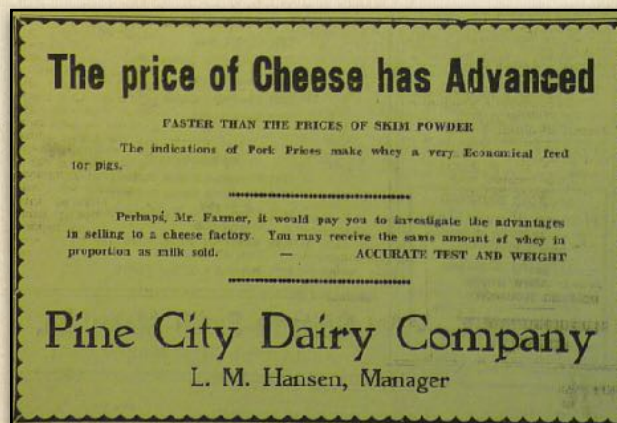


The fourth creamery location appears on the 1931 Sanborn map. It was located on 2nd avenue and it is the only Pine City creamery building still standing. We know this was called Pine City Dairy and went out of business sometime between 1948 and 1953.

1931 SANBORN MAP



PINE CITY DAIRY BUILDING



1941 AD

HANSEN BROS. BUY PINE CITY DAIRY

Hansen Bros. of Stanchfield, proprietors of a creamery at that point, are the new owners of the Pine City Dairy, having purchased the plant from Fritz Schwab on the 16th of the month. The new owners have taken charge, but both Mr. and Mrs. Schwab are still on the job, helping them get acquainted in charge of the Pine City plant is L. M. Hansen, who has been associated with a brother, L. C. Hansen, in the Stanchfield plant for a number of years.

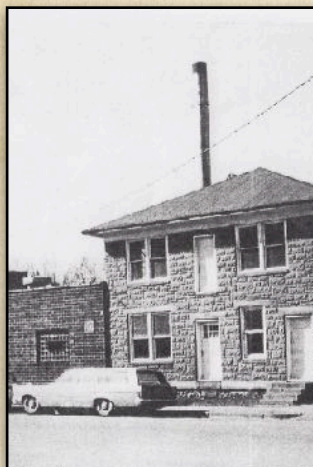
Cheese and butter are being manufactured at the Pine City plant at this time, with cheese the main product. The company will continue as in the past with trucks making regular routes through the country, tributary to Pine City.

Because of the fact that he had a half interest in a Swiss cheese factory in southern Ohio, Mr. Schwab has been anxious to get back and look after his interests there. They do not plan on moving back to Ohio immediately as they have built their own home here, one of the new homes built this past season, and have some business matters to close up.

We welcome the new firm to our community and can assure them that they will find Pine City a nice place in which to live and do business.

PINE CITY POKER PIONEER
NOVEMBER 28, 1940

1967



2012



The fifth creamery location was the Land O' Lakes processing plant that was in operation from 1947 to 1983. Technically the Land O' Lakes building did not start out as a creamery. Rather the Land O' Lakes plant collected skim milk from the local creameries and turned it into dry milk. About 1964 the plant began to process whole milk and then served as a more traditional creamery until 1983 when the plant closed. Today milk from most dairy operations in the Pine City area goes to the Burnett Dairy in Alpha, Wisconsin.

