





# WHEN THE WALLS TALK

## 24144 St. Croix Road

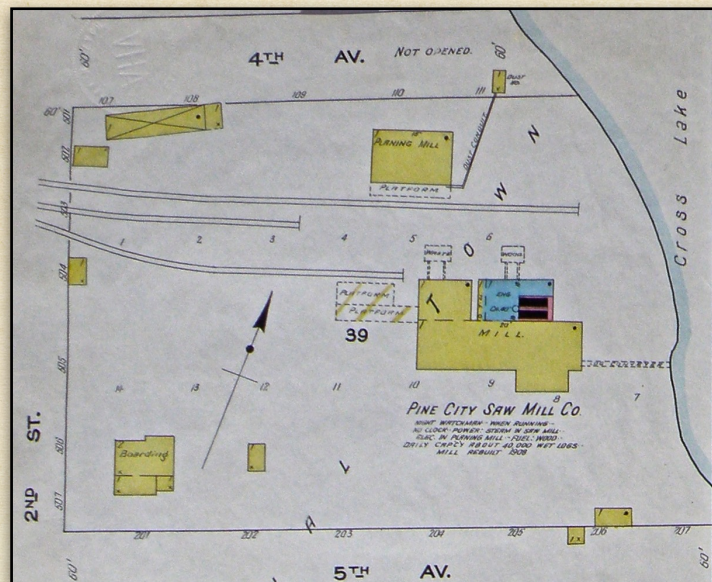


The reverse side was stamped "Pine City Sawmill". The Pine City Sawmill began operation in 1909 when a group of Stillwater investors purchased the McGrath Sawmill located on the west side of Cross Lake.

**WILL REMAIN IN PINE CITY**

**The Pine City Sawmill Under a New Management Will Continue to Operate at This Point.**

"The McGrath saw mill has been purchased by a stock company composed of Stillwater lumbermen, who have timber enough to keep it running during the summers, at least for the next nine or ten years." Mr. Christ. Sommers, of Stillwater, has a crew of men here and will remodel the inside of the mill, put in new machinery and make a great many needed improvements. He is engaged at the present time in erecting an addition, which will be used for a lath mill. Mr. Sommers informs us that he will have the major part of the improvements to be done this season finished by the first of March. When the improvements are all completed that are to be done this season it is expected that the mill will saw more lumber and at less expense than ever before and when all the improvements that the company have in mind are completed, Pine City will have a first class saw mill, one of the best in her history.



1911 Sanborn Map

The sawmill gets nary a mention in the newspaper through 1910. The logging industry was changing at this point. The logging camps were moving further north and relying less on the waterways and more on railroads to transport the logs.

Pine County Pioneer  
January 22, 1909



COMPILED BY:

Pine City Area History Association



WHEN THE WALLS TALK  
24144 St. Croix Road



In 1911 the Pine City Saw Mill announced that they were adding a retail department to their business through the purchase of the Midland Lumber and Coal Co. Midland Lumber and Coal Co. had been in operation in Pine City since 1906.

**ANNOUNCEMENT**

We beg to announce that we have purchased the sheds and stock of the Midland Lumber and Coal Co., and will in the future carry on a Retail Department in connection with our Saw Mill operation at Pine City.

In addition to a complete shed stock of Building Material, including Sash, Doors and Blinds, Siding, Ceiling and Flooring; Lath and Shingles; we propose to offer to the Consumer of Pine County his choice of any stock in our Lumber Yard. Owing to delayed drives our Yard Stock is at present low, but we will operate our Saw Mill at full capacity during the remainder of the year. This stock is all 1911 cut, well-manufactured, evenly graded, bright and clean. We can saw to your order on short notice, and mill-work your requirements while you wait.

We invite an inspection of our stock, and a talk with you on anything in the Building line. We hope to establish a reputation for good merchandise and correct prices.

**Pine City Saw Mill Co.**  
L. B. McCLEARY, Manager Saw Mill.  
ED, GALLES :- Retail Manager.

Pine County Pioneer  
August 11, 1911

**Business Change.**

This week we were informed that the Pine City Mercantile Co. lumber yard had been sold to the Midland Coal & Lumber Co., of Minneapolis, and that the deal had been closed December 1st, 1905, but the company will not take charge of their new property until next Monday.

Mr. Harte, of the Mercantile Co., has been in the lumber business ever since he was in his teens—in fact—he started out as cookee in a lumber camp when he was a young lad, and his desire to retire from the lumber business lead to the sale of the yard.

The new company will be located in the shed across the tracks from the Westman lumber shed. A large addition will be built onto the south end of the shed and the yards will be enlarged.

Pine County Pioneer  
February 2, 1906

In 1906 the Pine City Mercantile sold their lumber yard to Midland Coal & Lumber Co. of Minneapolis.

Ed Galles, manager at Midland, since mid 1906 continued in his position.

When you Want  
**Building Material**  
call on the  
**Midland Lumber & Coal Co.**  
Good Lumber at lowest market prices.  
F. L. CUNDY, Manager. PINE CITY, MINN.

Pine County Pioneer March 9, 1906

Ed. Galles is now the local manager of the Midland Lumber and Coal Co. having assumed the responsible position Monday. Mr. Cundy, the erstwhile manager, finished his work here last week and, together with his family, has moved to Howard Lake to take charge of a yard. During their short stay in this place Mr. and Mrs. Cundy have made many friends who regret their departure and who wish them every success in their new home.

Pine County Pioneer  
August 24, 1906



COMPILED BY  
**Pine City Area History Association**



# WHEN THE WALLS TALK

## 24144 St. Croix Road



With the addition of a retail department, ads for the Pine City Saw Mill began to appear in the local paper, the Pine County Pioneer.

**What Is In A Name?**

Read the list in ours; you will find almost anything you need in the building line and if there is anything we have missed, we have it too.

**What We Will Do.**

Call on us when in need of any of these articles and we will convince you that this is the place to get the very best value for your money.

**One piece or a car load.**

**Pine City Saw Mill Co.**  
ED. GALLES :: Retail Manager.

- P laster
- I nterior Finish
- N ewels
- E ave Gutter
- C ement
- I daho Pine Doors
- T ile
- Y ellow Pine
- S hingles
- A rt Glass
- W indows
- M ill Work
- I Steel-beams
- L umber
- L ath
- C ompoboard
- O ffice Fixtures

Pine County Pioneer  
January 5, 1912

**We Need Your Trade,  
You Need Our Service.**

Co-operation is the life of a business. The life of the home and the life of the community. "A house divided against itself cannot stand;" a community divided against itself cannot stand. Therefore, let us get together.

To you, Mr. Man, who has in mind the construction of a new building or the repair of an old one, we want to co-operate with you. We want to get together and reason the thing out with you. We offer you the very best possible service in the building line. A lost opportunity if you do not let us figure your bill.

**One Piece or a Carload.**

**Pine City Saw Mill Co.**  
ED. GALLES :: Retail Manager.

Pine County Pioneer  
March 21, 1913

**The Big Problem  
For Home Builders**

is the selection of material best suited to their individual requirements. Lumber is generally conceded the best all around material that can be used. Its use insures a sanitary, healthful abode and with it a home can be planned to come within the reach of all sizes of purses—subject to future day expansion as your family increases. There are many advantages we have discovered in our years of experience with lumber which we believe would be extremely interesting to you—all of which can be had for the asking. At present our stock is well assorted and we can supply all sized bills without delay. Come in, look us over and let us tell you how you can utilize lumber to the best advantage. We want also to show you the difference in lumber and why grades determine price. This is worth knowing.

**"There's no Place Like Home"  
One Piece or a Carload.**

**Pine City Saw Mill Co.**  
ED. GALLES :: Retail Manager.

Pine County Pioneer  
April 4, 1913

**Why Swat Flies  
All Summer Long**

And let them jeopardize the health of your family when for a small sum you can equip **Your Home With**

**Screen Doors and Windows**

We're prepared to supply your demands in screens and can fit out your home from our stock. A variety of regular sizes carried, made with rustless wire.

**Screen Your Home and  
Live in Comfort**

**One Piece or a Carload.**

**Pine City Saw Mill Co.**  
ED. GALLES :: Retail Manager.

Pine County Pioneer  
May 2, 1913

**Don't be Deceived  
On Lumber Prices**

There's a big difference in buying just lumber and in buying the kind of lumber we sell. Your contractor or carpenter will tell you that some lumber can be nailed right into a house without a plane ever touching it. That means the saving of hand labor. Of course, the lumber dealer has to charge a little more for this smoothly finished lumber, but in the end it really means a big saving to you. Right here is where a lot of mistakes are made when lumber is bought solely on price—without regard to quality. True, 15 to 20 years ago lumber sold for from 10 to 25 per cent cheaper, but you do yourself and pocketbook a great injustice when you compare that lumber with the 50 to 75 per cent greater values you really get today. Come in and see the difference.

**One Piece or a Carload.**

**Pine City Saw Mill Co.**  
ED. GALLES :: Retail Manager.

Pine County Pioneer  
May 23, 1913

**The Darn Rusty  
Old Thing**

Guess it means another a new Mower, and here I bought this one only three seasons ago. It does beat all how soon one of these machines they make nowadays will wear out and go to pieces.

**Thus spoke Farmer Careless.**

Well! we wonder, What on earth he expects. Trees make mighty poor protection for machinery.

Good lumber for sheds doesn't cost anywhere as much as machinery does.

**One Piece or a Carload.**

**Pine City Saw Mill Co.**  
ED. GALLES :: Retail Manager.

Pine County Pioneer  
June 27, 1913



COMPILED BY  
**Pine City Area History Association**



# WHEN THE WALLS TALK 24144 St. Croix Road



Contrary to many businesses at the time the Pine City Saw Mill had creative ads that changed frequently.

**Artistic Effects  
For Home Building**

can be secured by the use of lumber, usually at a great saving over substitutes and with much greater stability. Shingles and novelty siding properly used is one example for exterior effect, and for interior purposes there are dozens of patterns and a variety of woods that, with comparatively little extra cost, furnish just those dainty pleasing touches that mean so much for comfort and coziness. We want to talk with you about this lumber question before you build and give you the benefit of our years of observation—tell you why frame construction is the best and show you by comparison why we think so. Come in and let's get acquainted.

**One Piece or a Carload.**

**Pine City SawMill Co**  
E. D. GALLES :: Retail Manager.

Pine County Pioneer  
August 15, 1913

**You Can Stretch  
a Frame House**

to meet your requirements any time your family needs demand it—by adding a room or two—and when the old and new are painted you have a house as good as new at small expense.

Before deciding on the material you are going to us, we want to tell you more about lumber for home building. We believe we can be of service to you and will be glad to talk it over with you. Come in and let us prove it.

**One Piece or a Carload.**

**Pine City SawMill Co**  
E. D. GALLES :: Retail Manager.

Pine County Pioneer  
September 19, 1913

**Home Builders  
Want Good Lumber**

in fact most of them absolutely insist on getting the best that their money will buy, and in that particular we heartily agree with them, because that is just the way we buy lumber. It must be strictly up to grade. There are some manufacturers, however, who interpret grades more liberal than others, and you can bet your last dollar that we know who they are. Because of this inside knowledge we're not afraid to put our lumber up against any in the country—grade for grade and price considered. If we're not on the inside we want to know it, because we're going to keep on believing we are until shown differently. Come in and look this lumber over and let us tell you first hand just what your house, barn or shed will cost you.

**One Piece or a Carload.**

**Pine City SawMill Co**  
E. D. GALLES :: Retail Manager.

Pine County Pioneer  
October 10, 1913

**Well Housed  
Stock**

does the most work and yields the most profits.

Live Stock costs money and is worth caring for.

A good stable is cheaper in the long run.

We've got the stuff to build that stable; let us save you money.

**Tarred Felts and Roofings**  
are our Specialities just now.

**One Piece or a Carload.**

**Pine City SawMill Co**  
E. D. GALLES :: Retail Manager.

Pine County Pioneer  
October 24, 1913

**Well Housed  
..STOCK..**

does the most work and yields the most profits.

Live Stock costs money and is worth caring for.

A good stable is cheaper in the long run.

We've got the stuff to build that stable; let us save you money.

**Tarred Felts and Roofings**  
are our Specialities just now.

**One Piece or a Carload.**

**Pine City SawMill Co**  
E. D. GALLES :: Retail Manager.

Pine County Pioneer  
November 21, 1913



COMPILED BY  
**Pine City Area History Association**



# WHEN THE WALLS TALK 24144 St. Croix Road



1914 brought ads in the Pine Poker.

**To Those We Know**

A Happy and Prosperous New year. We mean this in full measure, so don't say it is a selfish wish simply because we know we will share this prosperity with you.

**To Those We Don't Know**

Let's start the New Year right by getting acquainted. This certainly is not selfish because we know you will share the benefit with us.

ONE PIECE OR A CARLOAD.

**PINE CITY SAWMILL CO.**  
ED. F. GALLES, Retail Manager.

Pine Poker  
January 1, 1914

**Now is the time**

to have your estimate made for that house or barn you expect to build in the spring; and you certainly know that

**This is the place**

to get that estimate if you wish to secure the best possible service in this neck o' the woods. Ask us to show you plans for house or barn.

ONE PIECE OR A CARLOAD.

**PINE CITY SAWMILL CO.**  
ED. F. GALLES, Retail Manager.

Pine Poker  
January 29, 1914

**STOP**

and consider what your requirements in the building line are going to be, then come in and

**LOOK**

us over. We were never better equipped to meet your needs in the building line than we are to-day. It will pay you to

**LISTEN**

to our advice, as well as price, when it comes time to build that house.

ONE PIECE OR A CARLOAD.

**PINE CITY SAWMILL CO.**  
ED. F. GALLES, Retail Manager.

Pine Poker  
February 12, 1914

Constructing your barn is a scientific problem in efficiency—just like the construction of a modern factory. You should build it

- To take care of your increase in crops the next year.
- To stand the enormous strains to which it will be subjected.
- To save steps and permit quickest handling of contents.
- To conserve the quality of your crops and the health of your animals.

The better you barn meets three requirements the more money you will make. No one is better able than we are to help you make you barn what it should be. Let us talk it over with you

ONE PIECE OR A CARLOAD.

**PINE CITY SAWMILL CO.**  
ED. F. GALLES, Retail Manager.

Pine Poker  
March 26, 1914

**There's a Reason**

why you should be satisfied with only the best. To get the best value for your money should be your aim. Just now we are giving the best values in SHINGLES, ROOFING PAPER AND BUILDING PAPER. For the fall trade our stock of general building materials was never more complete and you will appreciate the opportunity of selecting your materials from our stock.

YOURS FOR SERVICE

**PINE CITY SAWMILL Co.**  
ED. F. GALLES, Retail Manager.

Pine Poker  
October 8, 1914

**Old Winter Is Coming!**

And there's many a man who has meant to get ready for the cold weather, but has neglected to attend to it. How is it about your place?

**Storm Windows and Storm Doors**

Will keep the cold out and reduce your coal bill 50 per cent. Don't try to heat all out doors—it can't be done.

YOURS FOR SERVICE

**PINE CITY SAWMILL Co.**  
ED. F. GALLES, Retail Manager.

Pine Poker  
November 26, 1914

**LATH BOLTS**

will turn your trees into money and your long winter days into good wages.

We will, during the next three months, operate a Lath Mill at our Pine City plant. We have contracted for One Hundred cars of four foot bolts to be shipped in, but we desire to purchase whatever can be furnished by the home farmers. This is an opportunity for you to receive

**A Log Stumpage For a Wood Bolt**

We can show you where our price for four foot lath bolts will net you more money than has ever been offered in this market for log timber. A man and a boy with a small team can do this logging.

YOUR SMALLEST TREES will apply on this "Logging Chance" as we buy these four foot "Logs" down to a four inch top.

Come In To Talk This Over With Us

**PINE CITY SAWMILL Co.**  
ED. F. GALLES, Retail Manager.

Pine Poker  
December 1, 1914

**1915**

Can be made the best year this Town and Country has ever enjoyed. It is up to YOU to make it. It is just as easy to be a puller as it is a piker, or a booster as it is a knocker. There is one place made especially for knockers—a place where it is not necessary to knock snow-balls off their heels.

We want to help build you a new home this year.

Yours for service,

**PINE CITY SAWMILL Co.**  
ED. F. GALLES, Retail Manager.

Pine Poker  
December 31, 1914



COMPILED BY  
**Pine City Area History Association**



# WHEN THE WALLS TALK 24144 St. Croix Road



## WILL OPERATE LATH MILL

Pine City Saw Mill Co. Putting in Machinery

## NEW INDUSTRY STARTS SOON

Will Employ Ten or a Dozen Men And Increase the Market

The Pine City Saw Mill Co. is installing lath manufacturing machinery in its old planing mill and expects to begin operations in that line about December 1st, intending to turn out some hundreds of carloads of lath during the season.

Messrs. Sommers and Volker of Stillwater were here the latter part of last week installing the bolt splitter and they returned yesterday from a few days absence in the Cities to complete preparations for beginning the run. Mr. Sommers will have charge of the mill during the season.

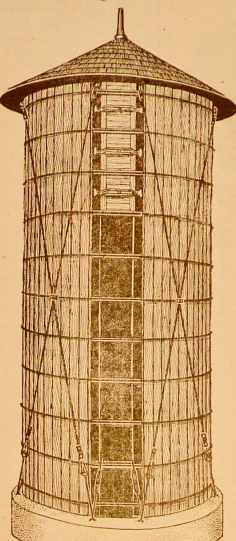
The company expects to ship in some 2000 or 3000 cords of bolts from points up the line, as far as Moose Lake, and will pay our own farmers the top notch price for 50 inch bolts, 4 inches or more in diameter, which will furnish everyone having any suitable timber with a fine market and help the general business whirl here this winter.

They will employ about ten or a dozen men, besides.

Pine Poker  
November 19, 1914

1914 also brought the addition of a lath mill to the Pine City Saw Mill operation.

**CHAMPION — The Silo That Has All The Qualities You Want In Your Silo**



There is one silo—only one—that combines all the good points of every type of silo construction and gives you the biggest possible value for the money you invest. That's the Champion silo—the one that will preserve 99 per cent of its contents, that is guaranteed decay-proof for 50 years and that is anchored so securely that it absolutely cannot move in any direction.

You can take your choice of any one of a number of silos whose makers claim permanence and stability for them but who don't say much about the silage-keeping qualities of their silo. Or you can pick out a silo that has good silage-keeping qualities but doesn't make any claims to long service or stability.

Neither of these silos will give you full value.

**Here Are The Three Important Points**  
Perfect Silage-Keeping—Durability—Stability

If you want these qualities you want a Champion. There's no other silo that will give you such silo service.

No silo ever built will preserve silage better. It takes a wood stave silo to keep silage right and that's what the Champion is.

The staves of the Champion silos are oil-filled and are guaranteed to be rot-proof for fifty years. That's Champion silo permanence—fifty years of service. And every year it keeps for you every possible ounce of silage in perfect condition.

The interlocking anchoring system on Champion silos absolutely insures stability. Champion silos can't collapse, vibrate, twist or creep on the foundation. They are as stable as any silo is claimed to be. This anchor practically makes the silo of one piece with the foundation.

Come in and let us show you what the Champion Silo is. Inspect the staves, note how the anchoring system is arranged and examine the red wood doors and steel door frames. We'll be glad to show you anything we can and to tell you about this silo. It will be worth your while to know about the Champion, too—it's the biggest silo value you can buy.

**Pine City Saw Mill Co.**  
PINE CITY, MINNESOTA

Pine City, Minn. JUL 1 1915 191

*Journal of Fred C. [unclear]*  
In account with *J. M. Chapman, Cash*

**Pine City Saw Mill Co.**  
LUMBER AND ALL KINDS OF BUILDING MATERIAL

Legal Rate of Interest Charged on All Past Due Accounts

	To Balance Forward	
Jan 15		3.60
Feb 15	To Merchants' Adv. received	1.44
Mar 15	"	2.40
Apr 15	"	3.76
May 15	"	17.04
Jun 15	"	3.84
"	"	3.24
"	"	13.20
"	"	17.64
"	"	58.27

1915 brought a few more ads, but change was coming.

Pine Poker  
February 18, 1915

**Figuring on a New Barn?**

Then you're the chap we want to see. We have about the slickest stock of barn material ever brought into this section. We figured on a good many of you people building new barns this year. So we bought at lowest prices, a splendid assortment of high grade material, especially for barns. And, take it from us, we can save you a nice bunch of money on your lumber bill.

Don't waste your time, wondering what the stuff would cost you. Make up a list of the items needed and let us tell you exactly what the cost will be. Bring in your bill next time you are in Town.

**PINE CITY SAW MILL GO.**  
ED. F. GALLES, Retail Manager

Pine Poker  
April 8, 1915

**Now Is The Time**

to build that house or barn you have had in mind for the last few years. Conditions this year in the lumber business are such that it will be greatly to your advantage to get busy.

**This Is The Place**

to buy the material you require for that house or barn. It will be greatly to your disadvantage if you do not allow us the privilege of figuring on your requirements.

**Pine City Saw Mill Co.**

Pine Poker  
June 17, 1915



COMPILED BY  
**Pine City Area History Association**



# WHEN THE WALLS TALK

## 24144 St. Croix Road



### Two Pine City Firms Sell Out

Pine City has seen two important business deals concluded this week, by which two of the best known firms in town—the Smith Hardware Co. and the Pine City Saw Mill Co.—pass into new hands. Both deals have been pending for some time but there has been no conclusion of them until within a few days.

The retail lumber business of the Pine City Saw Mill Co. will hereafter be conducted under the cooperative name Parrish-Boo Lumber Co., consisting of M. R. Parrish of St. Paul, Minn. and B. C. Boo of Stillwater, Minn. Mr. Parrish has for a number of years been a leading lumber salesman in the Twin cities, while Mr. Boo has had a long service with the mills and yards of the St. Croix. These gentlemen are widely known in the lumber business. Mr. Boo has taken up his residence in Pine City and will be in active charge though Ed. Galles continues as yard manager.

The Pine City Saw Mill Co. will continue in Pine City and will operate their lath and planing mill on a larger scale. Shipments of lath bolts and lumber stocks will shortly begin, but the mill not be put in operation as early as last season. Arthur Anderson will have local charge of their business—and is an excellent man for the work.

In early 1916 the retail side of the Pine City Saw Mill Company was bought by M.R. Parrish of St. Paul and B.C. Boo of Stillwater. The new company was called Parrish-Boo.

### FIX UP YOUR FENCES!

Part of the Clean Up and Paint Up Plan Is to Put Your Premises in Good Repair.

Our First Class Rough Lumber and Dressed Stock Will Be Found Very Satisfactory for All Kinds of Construction Work.



### Opportunity Knocks Again

But only they will profit who are alert to their own best interests. The time to build is when prosperity is on the rise and unless we are badly mistaken you are going to see a lot of our own people start new homes in 1916. Why not be one of them? Let us suggest a plan to meet your needs.

**PARRISH-BOO LUMBER CO.**

Pine Poker  
April 13, 1916

Pine Poker  
January 6, 1916



COMPILED BY  
**Pine City Area History Association**



WHEN THE WALLS TALK  
24144 St. Croix Road



Photo courtesy of Jim Foster

Taken from the waterpower looking northeast along 3rd Avenue.

The Parrish-Boo Lumber Company continued to serve Pine City for many years.

Ed Galles, who started with the Midland Lumber Company in 1906 continued to work for Parrish-Boo until 1920. He died in 1921.

Pine Poker  
February 17, 1921

ED GALLE'S PASSES AWAY

Edward Galles passed away at his home at Pine City, last Saturday morning at 9 o'clock at the age of 48 years. He had been ailing for the past few months from stomach troubles, complications setting in which caused his death very suddenly. The body was taken to Jordan, Minn., his old home, for burial.

He came to Pine City about 20 years ago and has been in the lumber business practically all of the time since, having been connected with the Midland Lumber Co., the Pine City Sawmill Co. and with the Parrish-Boo Lumber Co. for 5 years, resigning January 1st 1920 when he went into the silo business. Before coming here, he was with the lumber companies at Jordan and North Branch.

"Ed," as he was known by practically every man in this region, was a friend to all, and his friends are legion. They were shocked to hear of his sudden death, very few realizing his health was in such a serious condition. Besides his brothers and sisters, he leaves a wife and son, Ray Galles, who lives at home. The sympathy of the entire community is extended to the bereaved family.



COMPILED BY  
Pine City Area History Association